



EAST SAN GABRIEL VALLEY

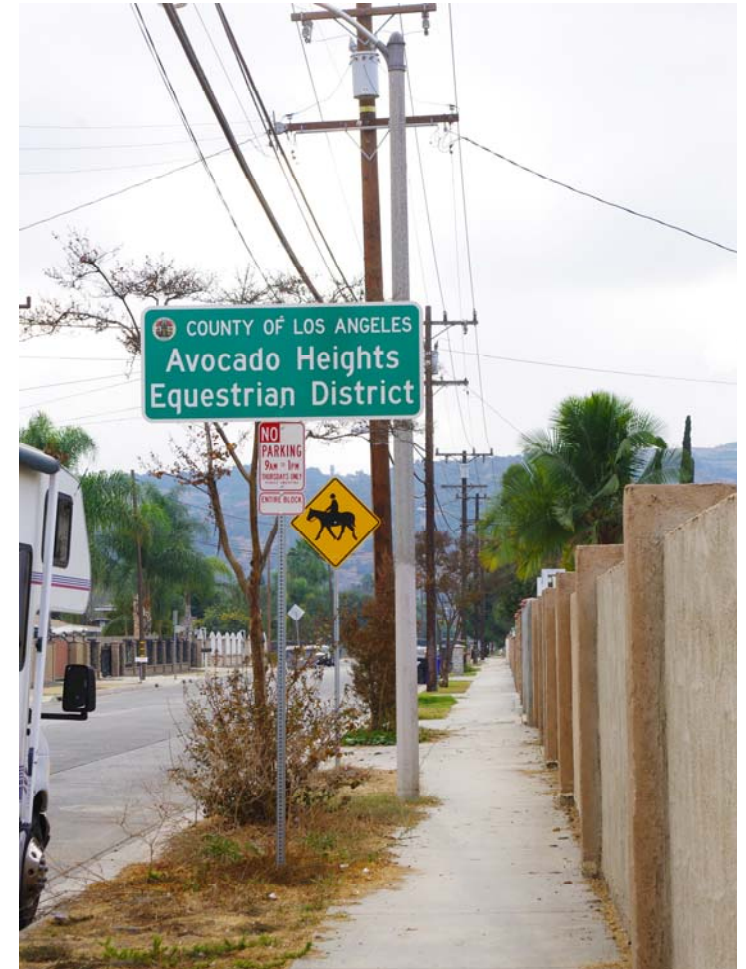


October 2021

1

## PROJECT UPDATES

- *Ongoing Work Efforts:*
  - Community Engagement Update
  - Goals & Plan Vision
  - Development of Draft Recommendations



IBI GROUP



evan  
brooks  
associates



East San Gabriel Valley Mobility Action Plan

October 2021

2

## COMMUNITY ENGAGEMENT

### • *Pop-Up Events:*



IBI GROUP



evan  
brooks  
associates



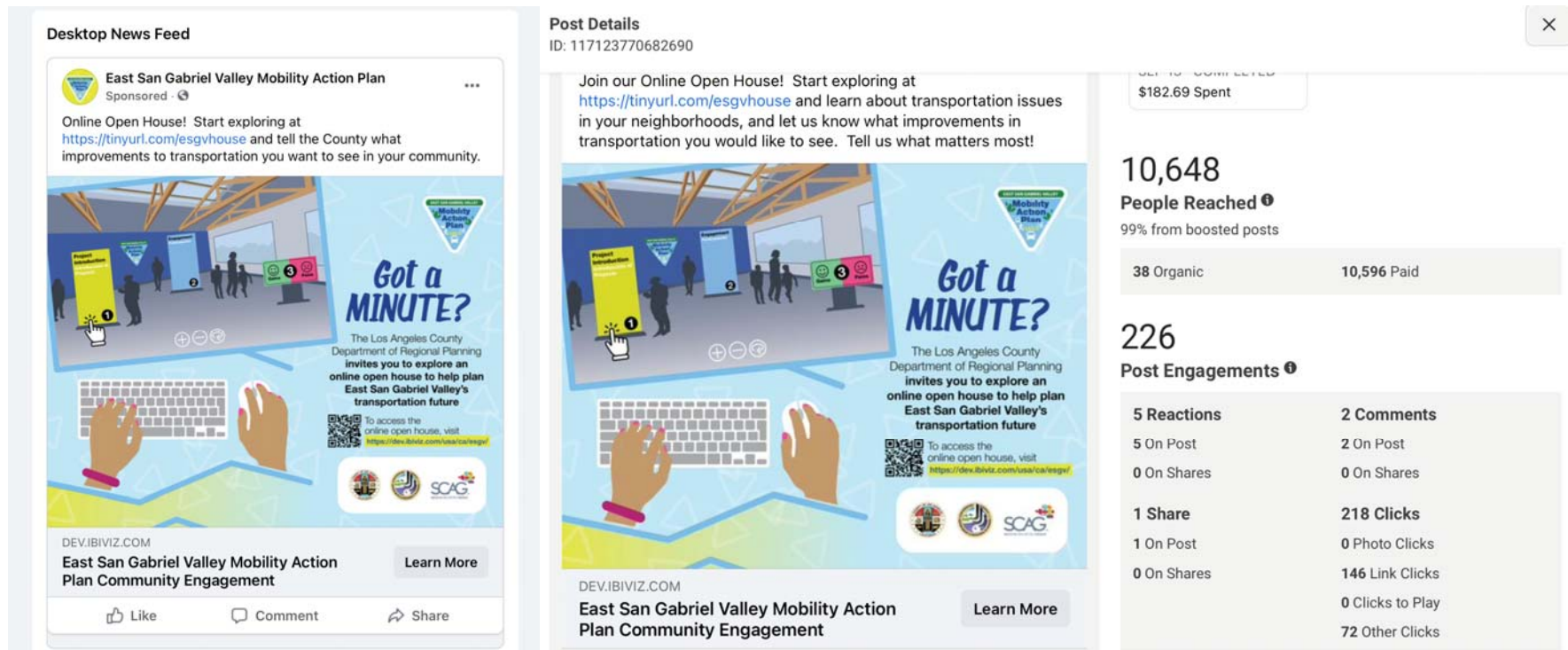
East San Gabriel Valley Mobility Action Plan

October 2021

3

## COMMUNITY ENGAGEMENT

### • Social Media Boosted Posts:



IBI GROUP



evan  
brooks  
associates

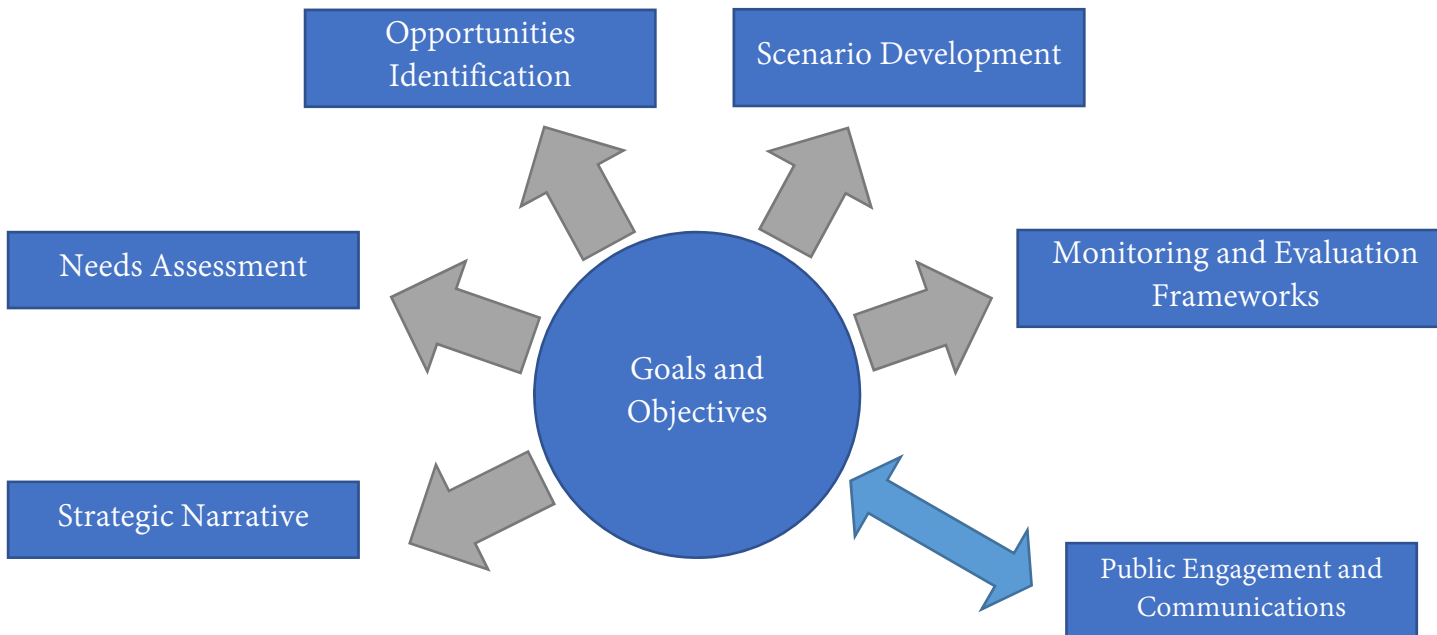


East San Gabriel Valley Mobility Action Plan

October 2021

4

## GOALS & OBJECTIVES



IBI GROUP



evan  
brooks  
associates



East San Gabriel Valley Mobility Action Plan

October 2021

5

## PRECEDENT PLANS AND DOCUMENTS



*Step by Step Los Angeles County*



**Active Transportation Strategic Plan**



IBI GROUP



evan  
brooks  
associates



East San Gabriel Valley Mobility Action Plan

October 2021

6

## LOS ANGELES COUNTY GENERAL PLAN

### Guiding Principles

- 1. Employ Smart Growth:** Shape new communities to align housing with jobs and services; and protect and conserve the County's natural and cultural resources, including the character of rural communities.
- 2. Ensure community services and infrastructure are sufficient to accommodate growth:** Coordinate an equitable sharing of public and private costs associated with providing appropriate community services and infrastructure to meet growth needs.
- 3. Provide the foundation for a strong and diverse economy:** Protect areas that generate employment and promote programs that support a stable and well educated workforce. This will provide a foundation for a jobs-housing balance and a vital and competitive economy in the unincorporated areas.
- 4. Promote excellence in environmental resource management:** Carefully manage the County's natural resources, such as air, water, wildlife habitats, mineral resources, agricultural land, forests, and open space in an integrated way that is both feasible and sustainable.
- 5. Provide healthy, livable and equitable communities:** Design communities that incorporate their cultural and historic surroundings, are not overburdened by nuisance and negative environmental factors, and provide reasonable access to food systems. These factors have a measureable effect on public well-being.



IBI GROUP



East San Gabriel Valley Mobility Action Plan

March 2021

7

## LOS ANGELES COUNTY GENERAL PLAN – MOBILITY ELEMENT

### Goals

- 1: Street designs that incorporate the needs of all users.
- 2: Interconnected and safe bicycle- and pedestrian-friendly streets, sidewalks, paths and trails that promote active transportation and transit use.
- 3: Streets that incorporate innovative designs.
- 4: An efficient multimodal transportation system that serves the needs of all residents.
- 5: Land use planning and transportation management that facilitates the use of transit.
- 6: The safe and efficient movement of goods.
- 7: Transportation networks that minimizes negative impacts to the environment and communities.



IBI GROUP



evan  
brooks  
associates



East San Gabriel Valley Mobility Action Plan

March 2021

8

## COUNTY OF LOS ANGELES VISION ZERO

### Guiding Principles

- 1: Health Equity - Reduce gaps in health outcomes by addressing the practices that disadvantage some populations over others and lead to health inequities.
- 2: Data-Driven Process - Identify where and why traffic collisions are happening and prioritize projects and programs in these areas.
- 3: Transparency - Maintain regular communication with the public about progress, and how the County is working to enhance traffic safety.

### Objectives

- A. Enhance County Process and Collaboration
- B. Address Health Inequities and Protect Vulnerable Users
- C. Collaborate with Communities to Enhance Roadway Safety
- D. Foster a Culture of Traffic Safety
- E. Be Transparent, Responsive, and Accountable



IBI GROUP



evan  
brooks  
associates



East San Gabriel Valley Mobility Action Plan

March 2021

## COUNTY OF LOS ANGELES OUR COUNTY SUSTAINABILITY PLAN



1. Resilient and healthy community environments where residents thrive in place
2. Buildings and infrastructure that support human health and resilience
3. Equitable and sustainable land use and development without displacement
4. A prosperous LA County that provides opportunities for all residents and businesses and supports the transition to a green economy
5. Thriving ecosystems, habitats, and biodiversity
6. Accessible parks, beaches, recreational waters, public lands, and public spaces that create opportunities for respite, recreation, ecological discovery, and cultural activities
7. A fossil fuel-free LA County
8. A convenient, safe, clean, and affordable transportation system that enhances mobility while reducing car dependency
9. Sustainable production and consumption of resources
10. A sustainable and just food system that enhances access to affordable, local, and healthy food
11. Inclusive, transparent, and accountable governance that facilitates participation in sustainability efforts, especially by disempowered communities
12. A commitment to realize OurCounty sustainability goals through creative, equitable, and coordinated funding and partnerships



IBI GROUP



evan  
brooks  
associates



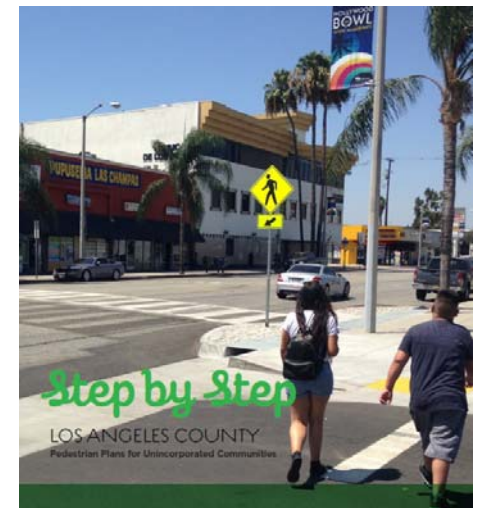
East San Gabriel Valley Mobility Action Plan

March 2021

## STEP-BY-STEP: PEDESTRIAN PLANS FOR UNINCORPORATED COMMUNITIES

### Goals

1. Safe Streets: Eliminate all fatalities and severe injuries involving people walking.
2. Make walking the easy and healthy choice
3. Connectivity: Develop and maintain a complete pedestrian network that links transit, schools, parks, and other key destinations in the community
4. Equity: Make unincorporated Los Angeles County more walkable for all through equity in public engagement, service delivery, accessibility, planning, and capital investments.
5. Safe Communities: Address real and perceived safety concerns to encourage walking
6. Sustainability and Preservation: Pedestrian projects and programs enhance the natural environment including clean air and water.
- 7: Coordinated County Implementation: County agencies and communities work together to implement pedestrian projects, policies, and programs.



IBI GROUP



evan  
brooks  
associates



East San Gabriel Valley Mobility Action Plan

March 2021

11

## SCAG – CONNECT SOCIAL 2020

### Goals

1. Encourage regional economic prosperity and global competitiveness.
2. Improve mobility, accessibility, reliability, and travel safety for people and goods.
3. Enhance the preservation, security, and resilience of the regional transportation system.
4. Increase person and goods throughput and travel choices within the transportation system.
5. Reduce greenhouse gas emissions and improve air quality.
6. Support healthy and equitable communities.
7. Adapt to a changing climate and support an integrated regional development pattern and transportation network.
8. Leverage new transportation technologies and data-driven solutions that result in more efficient travel.
9. Encourage development of diverse housing types in areas well supported by multiple transportation options.
10. Promote conservation of natural and agricultural lands and restoration of critical habitats.



IBI GROUP



evan  
brooks  
associates



East San Gabriel Valley Mobility Action Plan

March 2021

12

## METRO – ACTIVE TRANSPORTATION STRATEGIC PLAN

### Vision

Define Metro’s overall strategy for funding and implementation of active transportation infrastructure and programs

### Goals

1. Improve access to transit
2. Establish active transportation modes as integral elements of the countywide transportation system
3. Enhance safety, remove barriers to access, or correct unsafe conditions in areas of heavy traffic, high transit use, and dense bicycle and pedestrian activity
4. Promote multiple clean transportation options to reduce criteria pollutants and greenhouse gas emissions and improve air quality
5. Improve public health through traffic safety, reduced exposure to pollutants, and design and infrastructure that encourage residents to use active transportation as a way to integrate physical activity into their daily lives



IBI GROUP



East San Gabriel Valley Mobility Action Plan

March 2021

13

## METRO – ACTIVE TRANSPORTATION STRATEGIC PLAN

### Objectives

1. Identify improvements that increase first last mile access to transit by active modes
2. Provide guidance for setting regional active transportation policies and guidelines to guide future investment
3. Develop a funding strategy and explore opportunities to expedite implementation
4. Develop supporting programs and policies related to education, enforcement, encouragement, and evaluation
5. Work with partners to create a regional active transportation network



IBI GROUP



evan  
brooks  
associates



East San Gabriel Valley Mobility Action Plan

March 2021

14

## STATE PLANS



(Contains principles,  
strategies and actions)



IBI GROUP



evan  
brooks  
associates



East San Gabriel Valley Mobility Action Plan

March 2021

## CALIFORNIA TRANSPORTATION PLAN



### Vision:

*California's safe, resilient, and universally accessible transportation system supports vibrant communities, advances racial and economic justice, and improves public and environmental health.*

### Goals:



IBI GROUP



evan  
brooks  
associates



East San Gabriel Valley Mobility Action Plan

March 2021

# CALIFORNIA TRANSPORTATION PLAN OBJECTIVES



## Safety

Provide a safe and secure transportation system

Eliminate fatalities and serious injuries on the transportation system

Improve personal security and infrastructure security on the transportation system

Improve emergency preparedness, response, and recovery on the transportation system



## Climate

Achieve statewide GHG emissions reduction targets and increase resilience to climate change

Advance a clean, carbon neutral transportation system

Increase climate resiliency



## Equity

Eliminate transportation burdens for low-income communities, communities of color, people with disabilities, and other disadvantaged groups

Improve transportation-related economic, environmental, and public health outcomes for disadvantaged communities

Improve access to a range of high-quality, safe, and affordable mobility options within disadvantaged communities

Support disadvantaged communities in playing an active and direct role in transportation decision making



## Accessibility

Improve multimodal mobility and access to destinations for all users

Increase access to destinations

Increase the competitiveness of transit, shared mobility, and active transportation options

Provide integrated and seamless travel connections

Optimize system performance for all modes



## Quality of Life & Public Health

Enable vibrant, healthy communities

Expand access to healthy transportation options

Reduce household transportation costs

Improve transportation-related public health outcomes

Support enjoyable trip experiences and vibrant public spaces



## Economy

Support a vibrant, resilient economy

Support diverse, equitable, and sustained economic growth

Facilitate efficient, reliable, and sustainable goods movement

Support local and regional economic development



## Environment

Enhance environmental health and reduce negative transportation impacts

Improve air quality and minimize pollutants from transportation

Protect and enhance California's natural resources and ecosystems

Protect and enhance California historic and cultural resource



## Infrastructure

Maintain a high-quality, resilient transportation system

Preserve and maintain existing multimodal transportation assets in a state of good repair

Increase infrastructure resiliency to climate change and natural disasters

Improve efficiency in project delivery

Secure sustainable, dedicated, long-term funding for the transportation system



East San Gabriel Valley Mobility Action Plan

March 2021

## FREIGHT PLAN

### Vision

Consistency with California Transportation Plan

### Goals

1. Multimodal Mobility
2. Economic Prosperity
3. Environmental Stewardship
4. Healthy Communities
5. Safety and Resiliency
6. Asset Management
7. Connectivity and Accessibility

**FREIGHT PLAN**  
California Freight  
Mobility Plan



IBI GROUP



evan  
brooks  
associates



East San Gabriel Valley Mobility Action Plan

March 2021

18

## GOAL SYNTHESIS

Agency	County of Los Angeles				SCAG	Caltrans		Metro
	General Plan (and Mobility Element)	Vision Zero Action Plan	OurCounty Sustainability Plan	Step-By- Step	Connect SoCal 2020	California Transportation Plan	California Freight Mobility Plan	Active Transportation Strategic Plan
Choices/multimodal travel	G M4		G8	G8	G9			O5
Connection/integration	G M2, 3, 6, 7					G4 (O1)		G2
GHG emissions / VMT reduction			G7	G7	G5 / G7	G2 / G7	G3 (O2)	G4
Housing/Land Use	GP 1, GM5		G3	G3			G3 (O3), G7 (O4)	
Mobility and accessibility	Goal M1		G6	G6	G2	G4 (O1-3)*		G1, O1
Quality of life	GP5		G1, G10	G1, G10	G6	G5 (O1-4)	G4 (O3), G7 (O3, O5)	G5, O4
Regional/Economic Prosperity	GP3	O1 (A2)	G4	G4	G1	G6 (O1-3)*	G2 (O1-4)	O2, O3
Resilience	G2		G2	G2	G3	G8 (O1-4)*		
Safety	GP2, GP3	All				G1 (O1-3)*	G5 (O1-3)*	G3
Social Equity	GP1		G11, G12	G11, G12		G3 (O1-3)*	G4 (O1, O2)	G6
Technology		O1(A4, A5)			G8	G7 (O1, O2)		



IBI GROUP



evan  
brooks  
associates



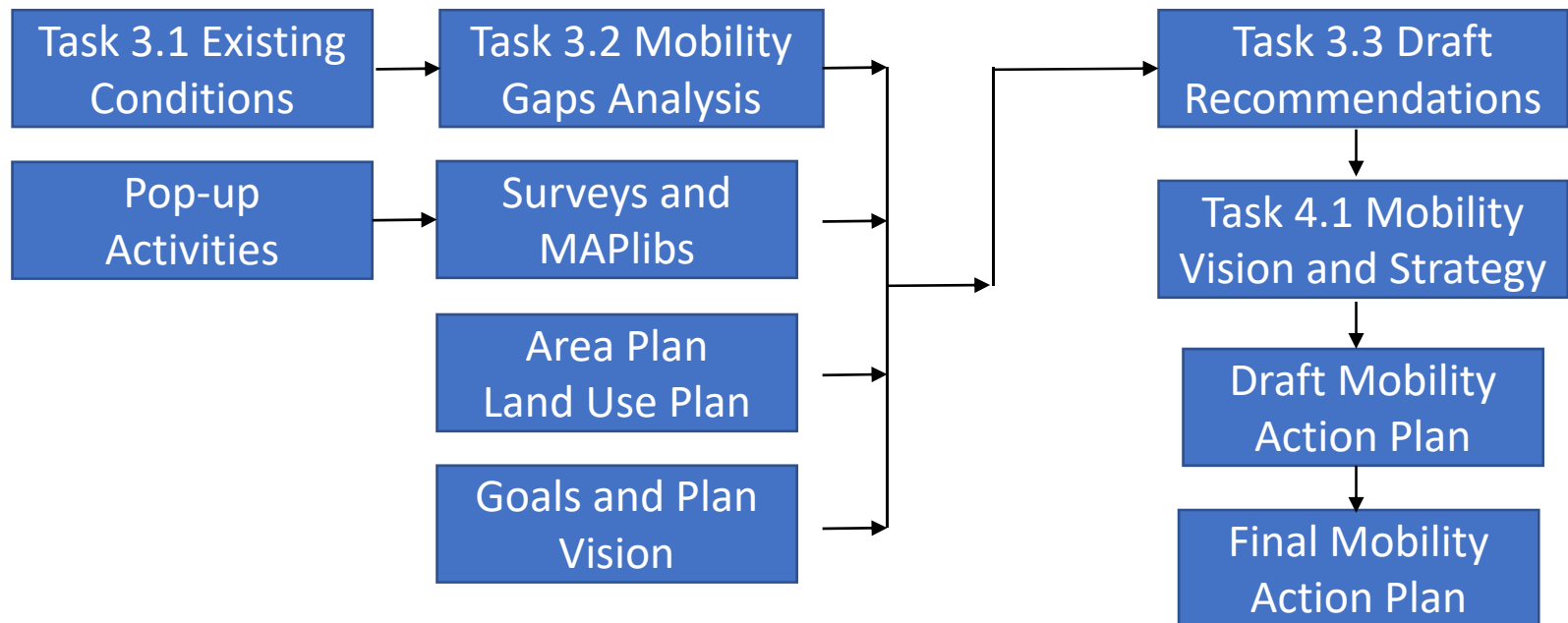
East San Gabriel Valley Mobility Action Plan

March 2021

19

## DRAFT RECOMMENDATIONS

### Process



IBI GROUP



evan  
brooks  
associates



East San Gabriel Valley Mobility Action Plan

October 2021

20

## NEXT STEPS

- ***Activities planned for Late 2021-Early 2022***
  - Round 2 community engagement activities
  - Complete work on MAP goals and vision
  - Develop draft recommendations on projects & strategies



IBI GROUP



evan  
brooks  
associates



East San Gabriel Valley Mobility Action Plan



# *Thank You!*

---



IBI GROUP



evan  
brooks  
associates



East San Gabriel Valley Mobility Action Plan

October 2021

22