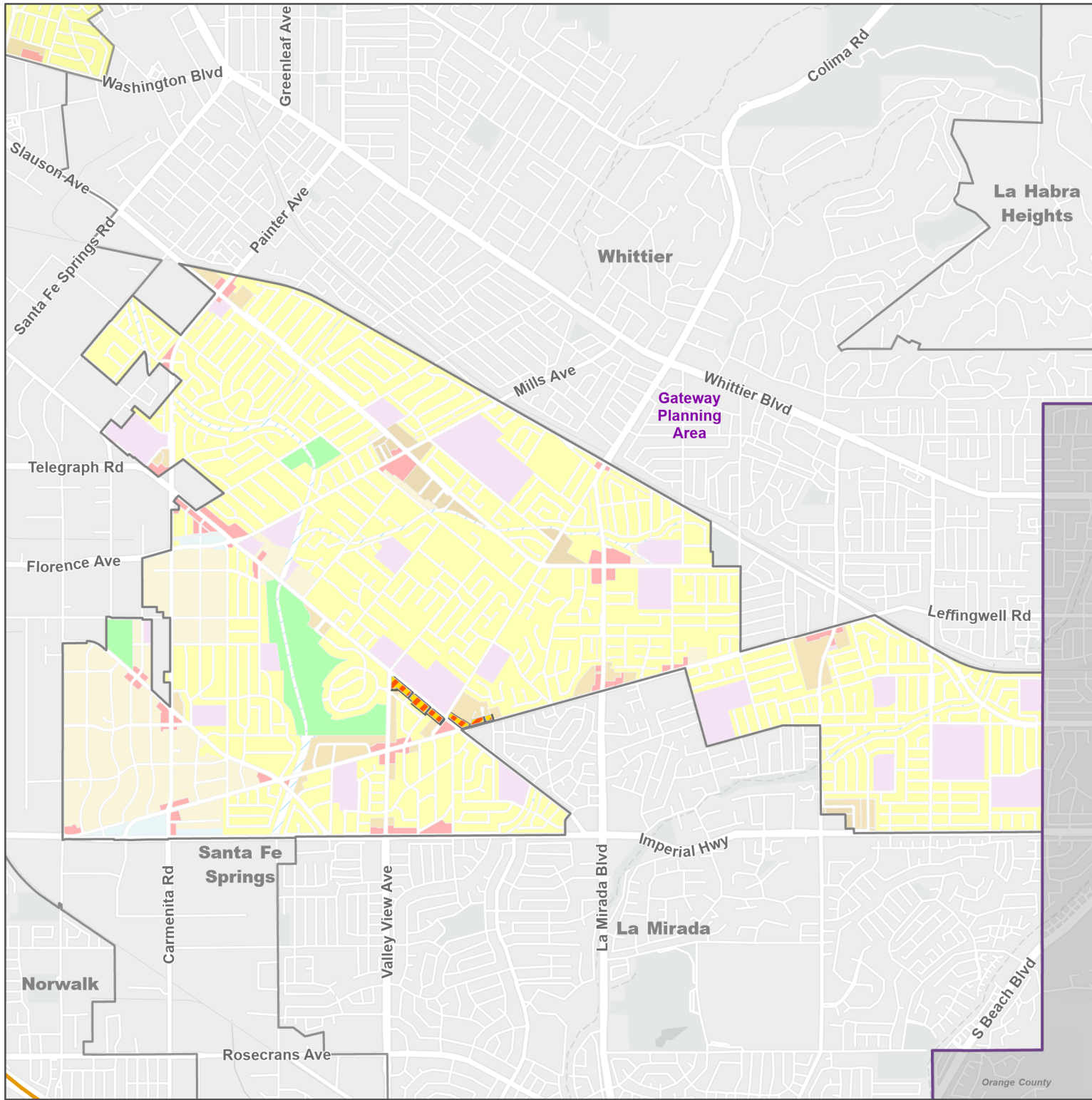
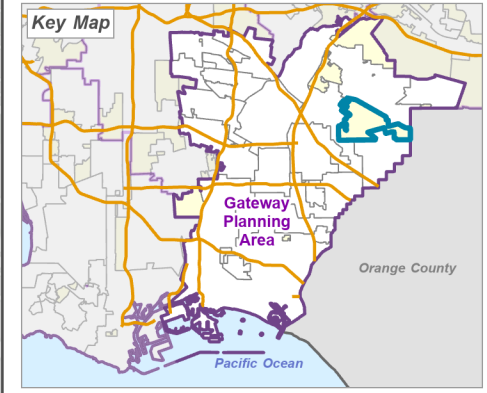


Los Angeles County

**Gateway Planning Area:
Proposed Land Use Policy Changes**
South Whittier - Sunshine Acres



-  Gateway Planning Area Boundary
-  MU - Mixed Use



LA COUNTY
PLANNING

LOS ANGELES COUNTY
Dept. of Regional Planning
320 W. Temple St.
Los Angeles, CA 90012



Prepared by DRP GIS Section / December 2022