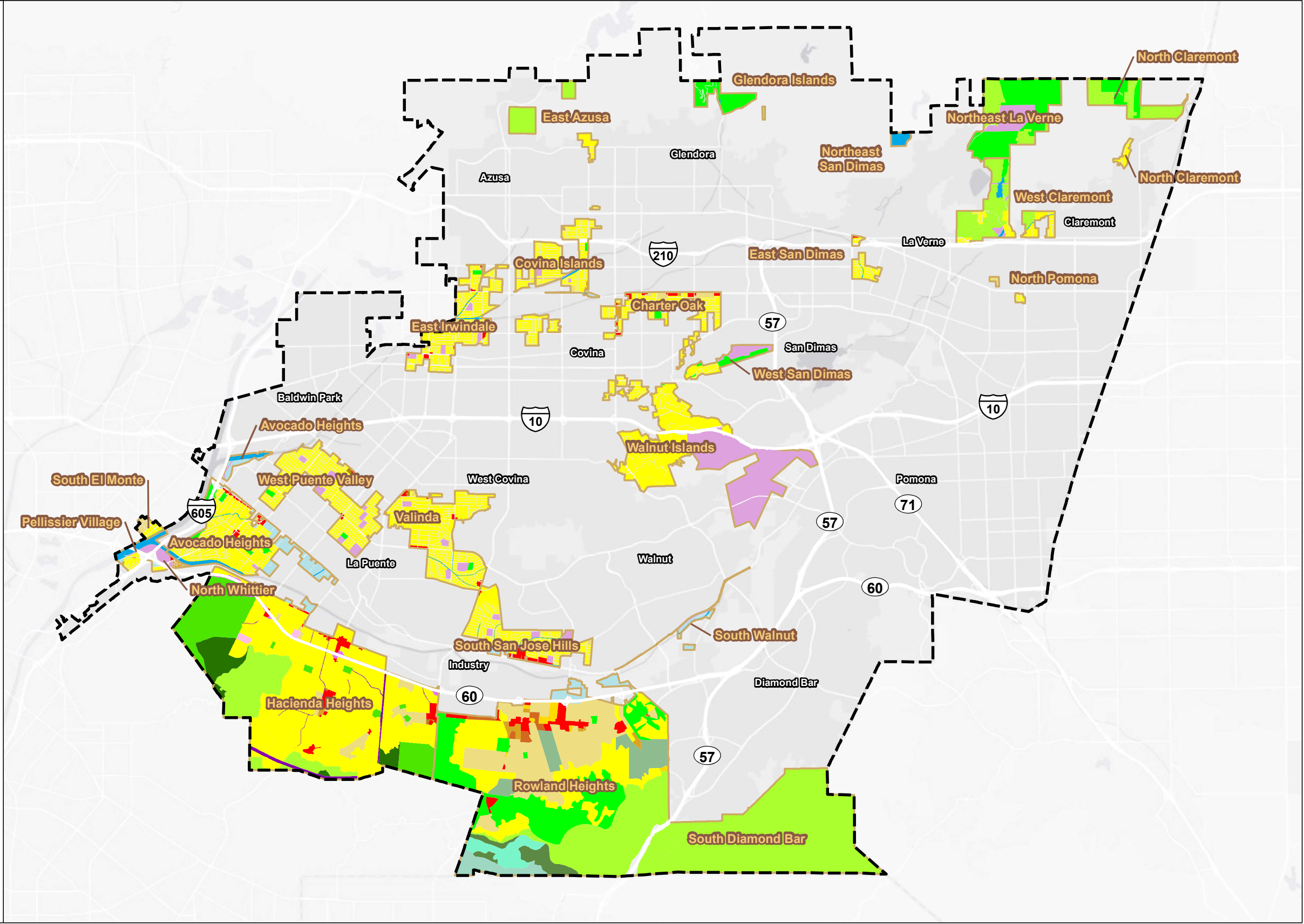


- Planning Area
- Unincorporated Area
- General Plan Land Use**
- RL1 - Rural Land 1
- RL2 - Rural Land 2
- RL10 - Rural Land 10
- RL20 - Rural Land 20
- H2 - Residential 2
- H5 - Residential 5
- H9 - Residential 9
- H18 - Residential 18
- H30 - Residential 30
- H50 - Residential 50
- CG - General Commercial
- IL - Light Industrial
- OS-C - Conservation
- OS-PR - Parks and Recreation
- P - Public and Semi-Public
- W - Water
- Rowland Heights Community Plan**
- N1 - Non-Urban 1 (0.2 du/ac)
- N2 - Non-Urban 2 (0.3 to 1.0 du/ac)
- U1 - Urban 1 (1.1 to 3.2 du/ac)
- U2 - Urban 2 (3.3 to 6.0 du/ac)
- U3 - Urban 3 (6.1 to 12.0 du/ac)
- U4 - Urban 4 (12.1 to 22.0 du/ac)
- U5 - Urban 5 (22.1 to 35.0 du/ac)
- C - Commercial
- I - Industrial
- O - Open Space
- TOS - Transitional Open Space (N1)
- TOS - Transitional Open Space (N2)
- TOS - Transitional Open Space (U1)
- Hacienda Heights Community Plan**
- RL10 - Rural Lands 10 (1du/10ac)
- RL2 - Rural Lands 2 (1du/2ac)
- H2 - Residential 2 (0-2 du/ac)
- H5 - Residential 5 (0-5 du/ac)
- H9 - Residential 9 (0-9 du/ac)
- H18 - Residential 18 (9-18 du/ac)
- H30 - Residential 30 (18-30 du/ac)
- H50 - Residential 50 (30-50 du/ac)
- CG - General Commercial
- P-CS - Public and Semi-Public Community Serving
- P-UF - Public and Semi-Public Utilities and Facilities
- P-TF - Public and Semi-Public - Transportation Facilities
- IL - Light Industrial
- OS-PR - Open Space Parks and Recreation
- OS-C - Open Space Conservation



Path: U:\GIS\GIS\Projects\19\1900035\_East\_SGV\_Area\_Plan\03\_MXD\Projects\Land Use\Fig1 - GeneralPlan.mxd - Nielsen, 6/1/2021

SOURCE: ESRI; Los Angeles County GIS; ESA, 2021.

East San Gabriel Valley Area Plan



**Figure 2-1**  
General Plan Land Uses