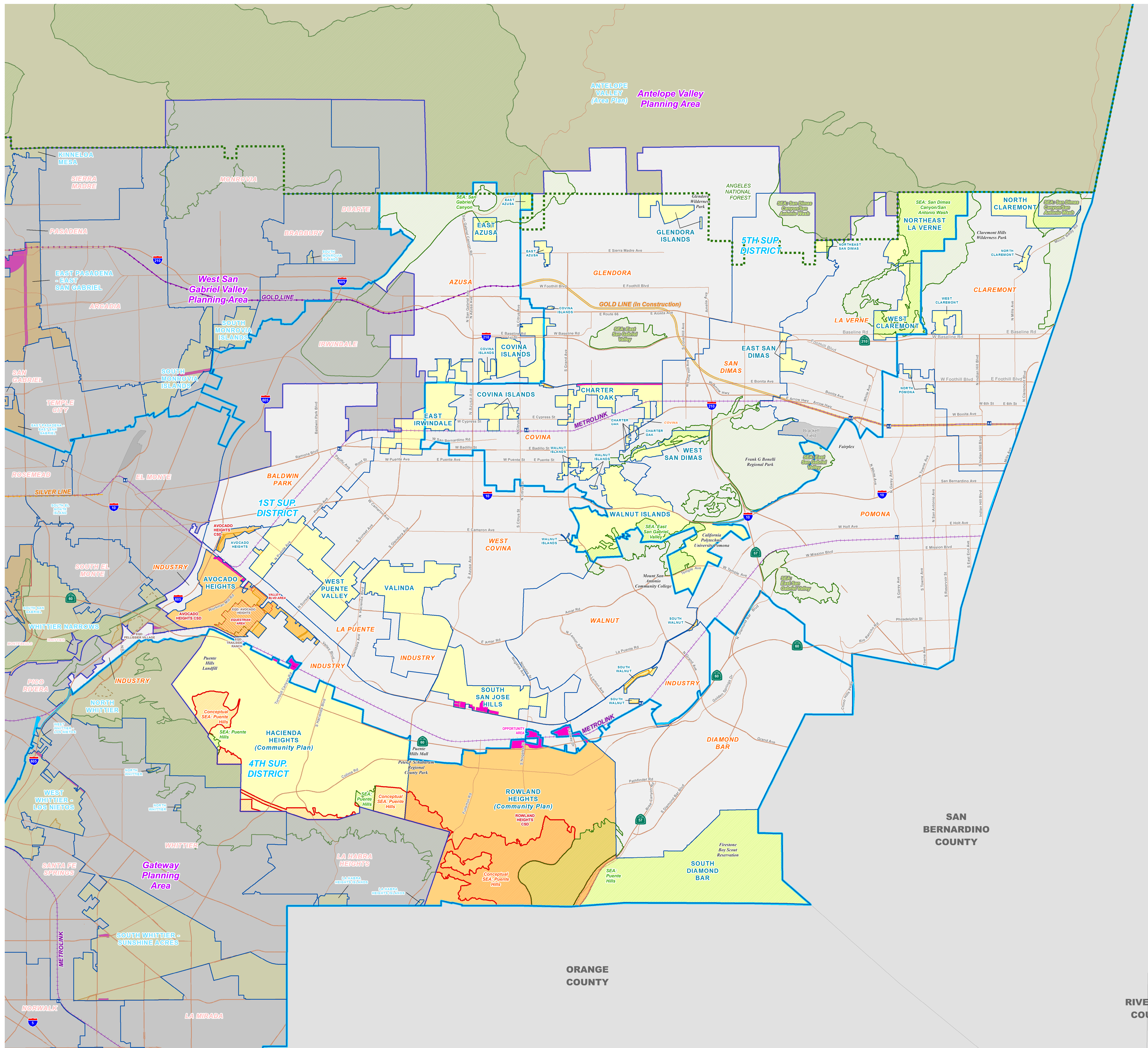


# EAST SAN GABRIEL VALLEY AREA PLAN

## Planning Area and Overlays

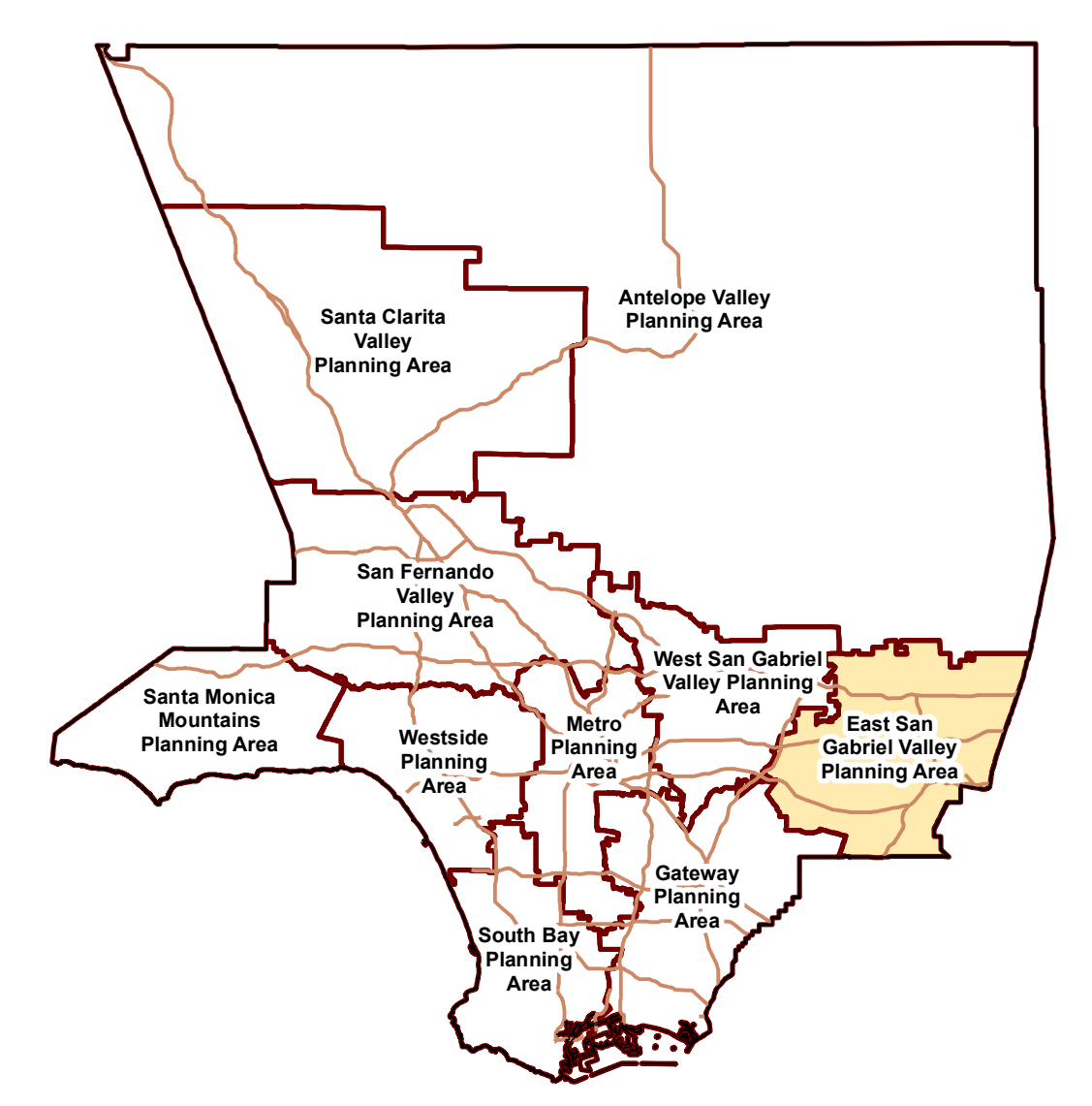


**LEGEND:**

- Surrounding Planning Areas
- Base Layers**
- Metro Rail Stations
- MetroLink Stations
- MetroLink
- Transitways
- Metro Rail - Existing
- Metro Rail - Proposed
- Metro Rail - Under Construction
- Airports
- City / Unincorporated Community Boundaries
- Supervisorial Districts
- Incorporated Cities
- Unincorporated Areas
- Surrounding Counties
- Overlays**
- Community Standards Districts (CSD)
- CSD Subareas
- Employment Protection Districts
- Equestrian Districts
- National Forest
- Opportunity Areas
- Significant Ecological Areas
- Significant Ecological Areas (Incorporated City)
- Conceptual SEAs

**NOTES:**

**KEY MAP:**



Current as of: March, 2016

Scale in Feet

0 1,500 3,000 6,000 9,000 12,000

LOS ANGELES COUNTY  
Department of Regional Planning  
320 W. Temple St.  
Los Angeles, CA 90012