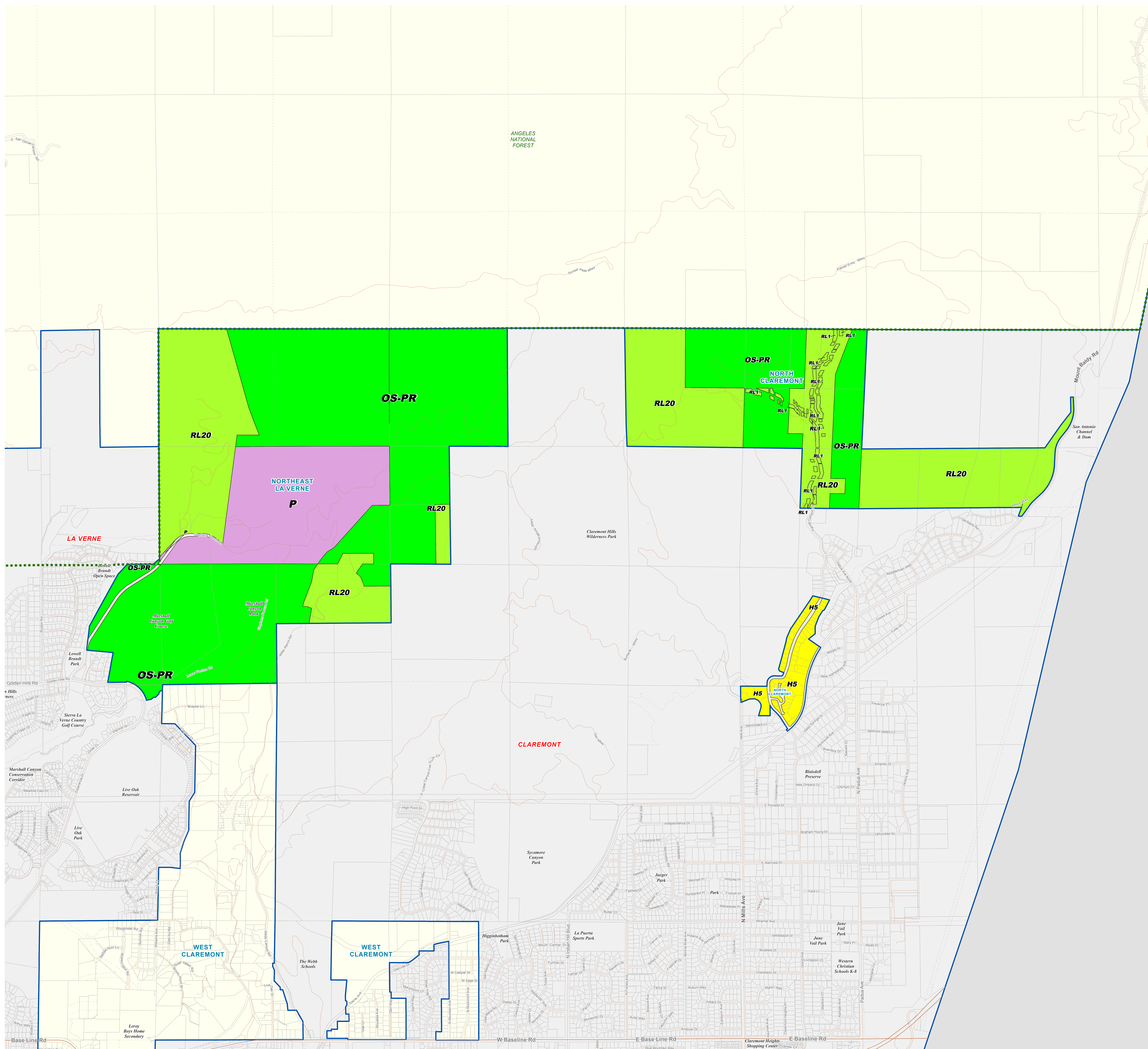


Los Angeles County

NORTH CLAREMONT & NORTHEAST LA VERNE

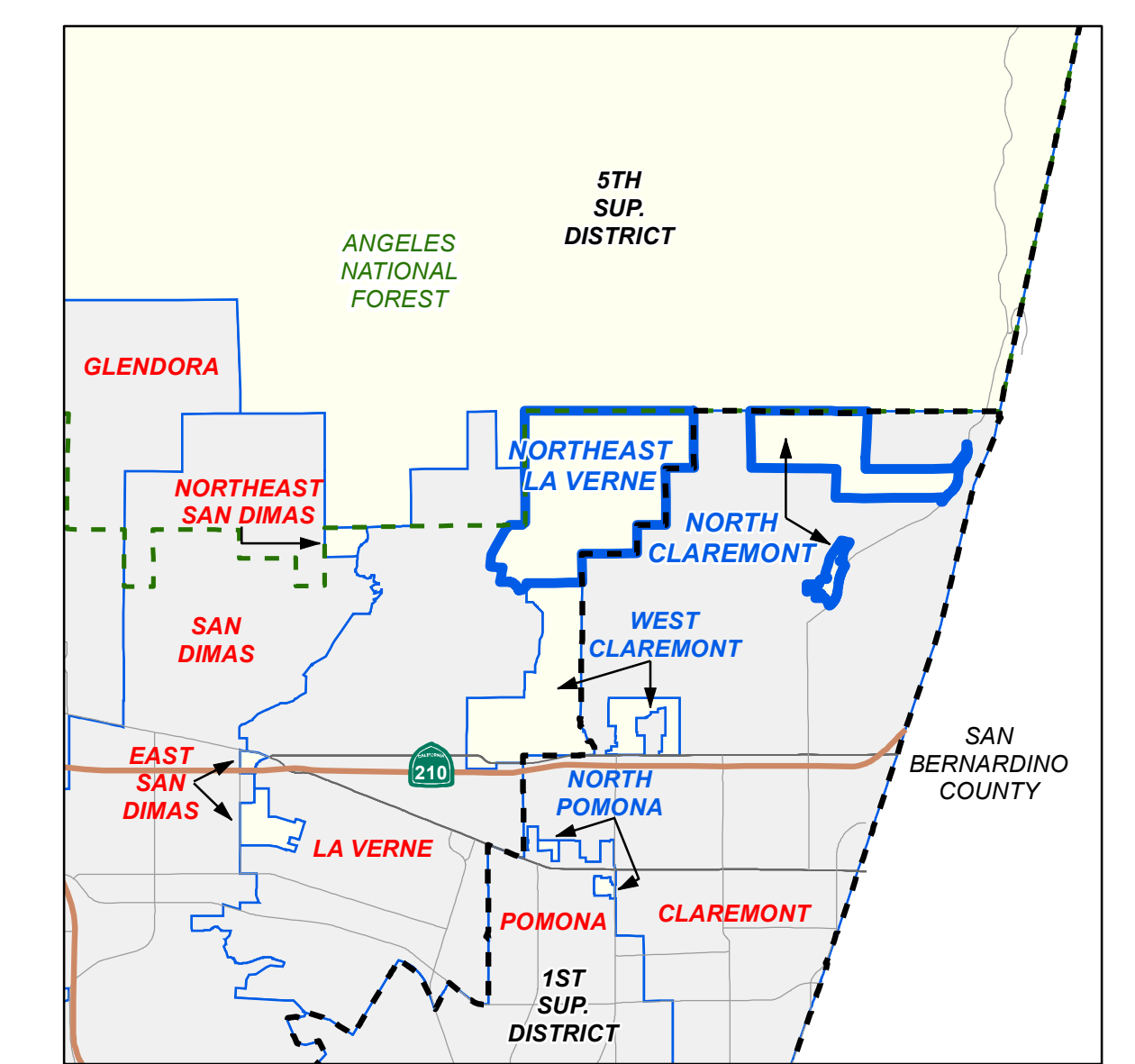
Land Use Policy



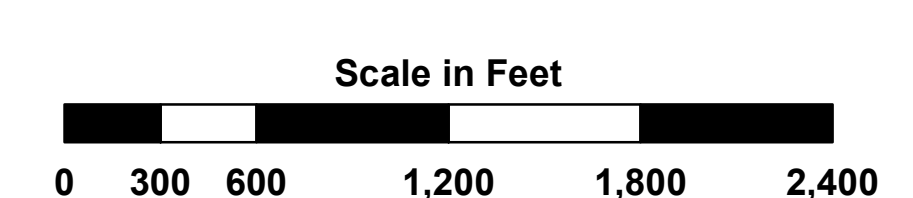
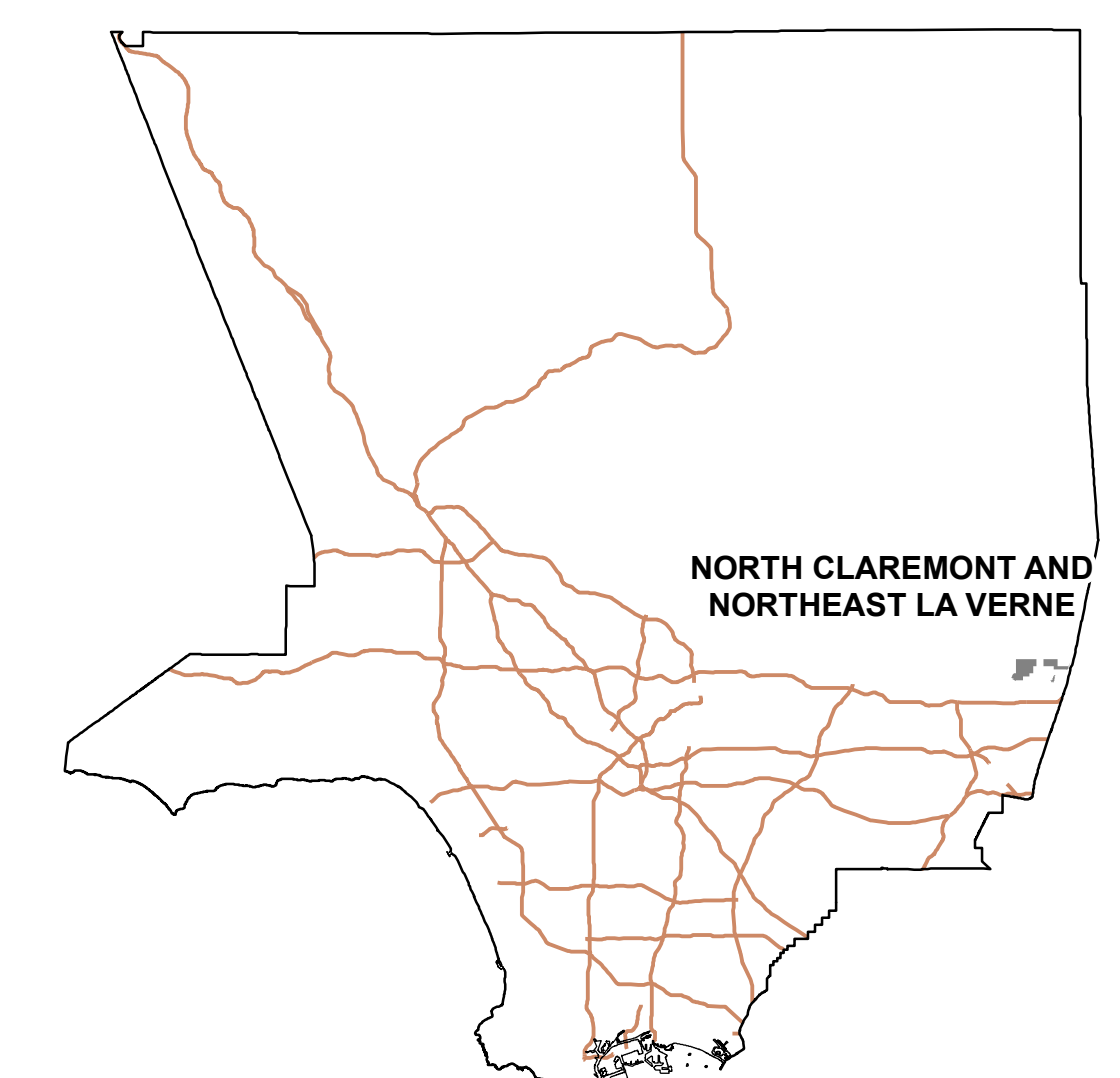
LEGEND

- RL1 - Rural Land 1
 - RL2 - Rural Land 2
 - RL5 - Rural Land 5
 - RL10 - Rural Land 10
 - RL20 - Rural Land 20
 - RL40 - Rural Land 40
 - H2 - Residential 2
 - H5 - Residential 5
 - H9 - Residential 9
 - H18 - Residential 18
 - H30 - Residential 30
 - H50 - Residential 50
 - H100 - Residential 100
 - H150 - Residential 150
 - CG - General Commercial
 - CM - Major Commercial
 - MU-R - Mixed Use - Rural
 - MU - Mixed Use
 - IL - Light Industrial
 - IH - Heavy Industrial
 - IO - Industrial Office
 - P - Public and Semi-Public
 - OS-BLM - Bureau of Land Management
 - OS-C - Conservation
 - OS-PR - Parks and Recreation
 - OS-NF - National Forest
 - OS-W - Water
 - MR - Mineral Resources
 - ML - Military Land
- Base Features**
 - Lot, Cut/Deed, Subdivision and Easement Line
 - Parcels
 - City / Unincorporated Community Boundary
 - Surrounding City
 - Surrounding Unincorporated Community
 - Water Feature
 - National Forest
- Overlays ***
 - Transit Oriented District
 - Employment Protection Districts
 - Specific Plan (SP)
- Transit Lines**
 - Metrolink Stations
 - Metro Rail Stations
 - Metrolink
 - Transitways
 - Light Rail - Existing
 - Light Rail - Proposed
 - Light Rail - Under Construction
- Street network data were derived from the Thomas Bros. database and reproduced with permission from Thomas Bros. Maps.
- Parcel data is sourced from the L.A. County Assessor's Office.
- * The Special Management Areas, which are comprised of environmentally sensitive, hazardous, and resource areas, are not shown on this map. Please refer to the General Plan Land Use Element for more information on the Special Management Areas.

VICINITY MAP:



KEY MAP:



LOS ANGELES COUNTY
Department of Regional Planning
320 W. Temple St.
Los Angeles, CA 90012

Current as of: May, 2014