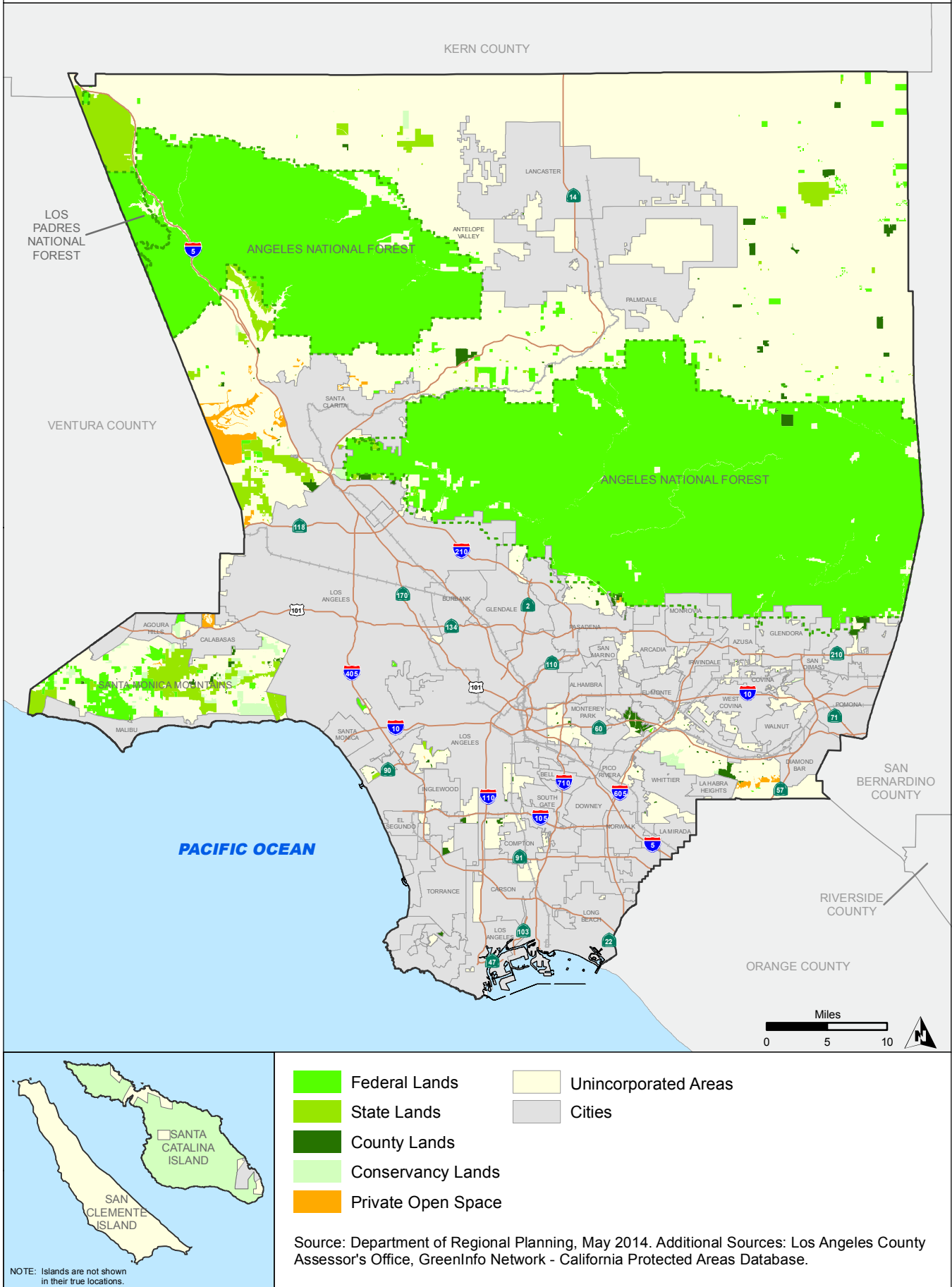


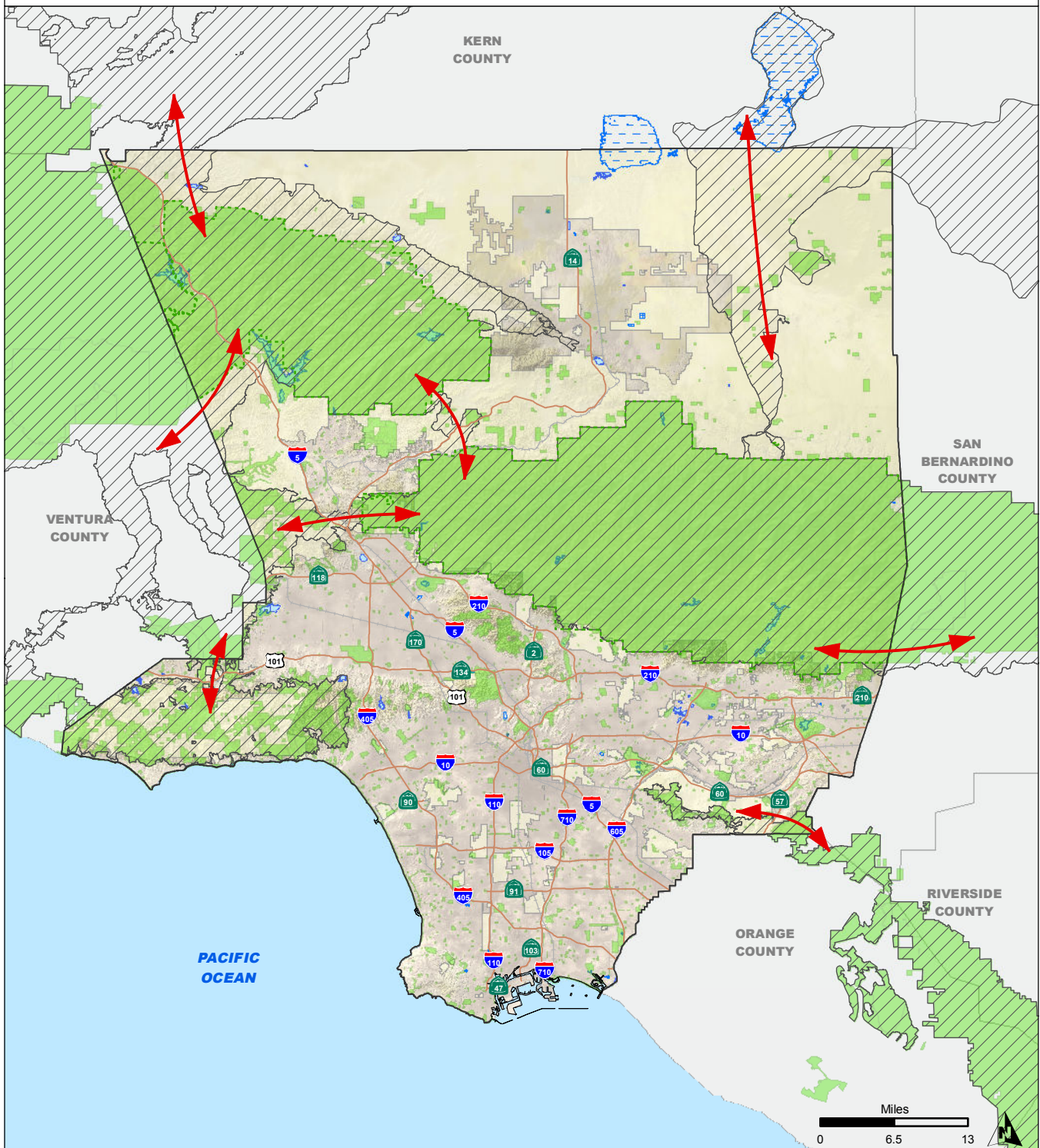
Open Space Resources Policy Map

Figure 9.1



Regional Habitat Linkages

Figure 9.2

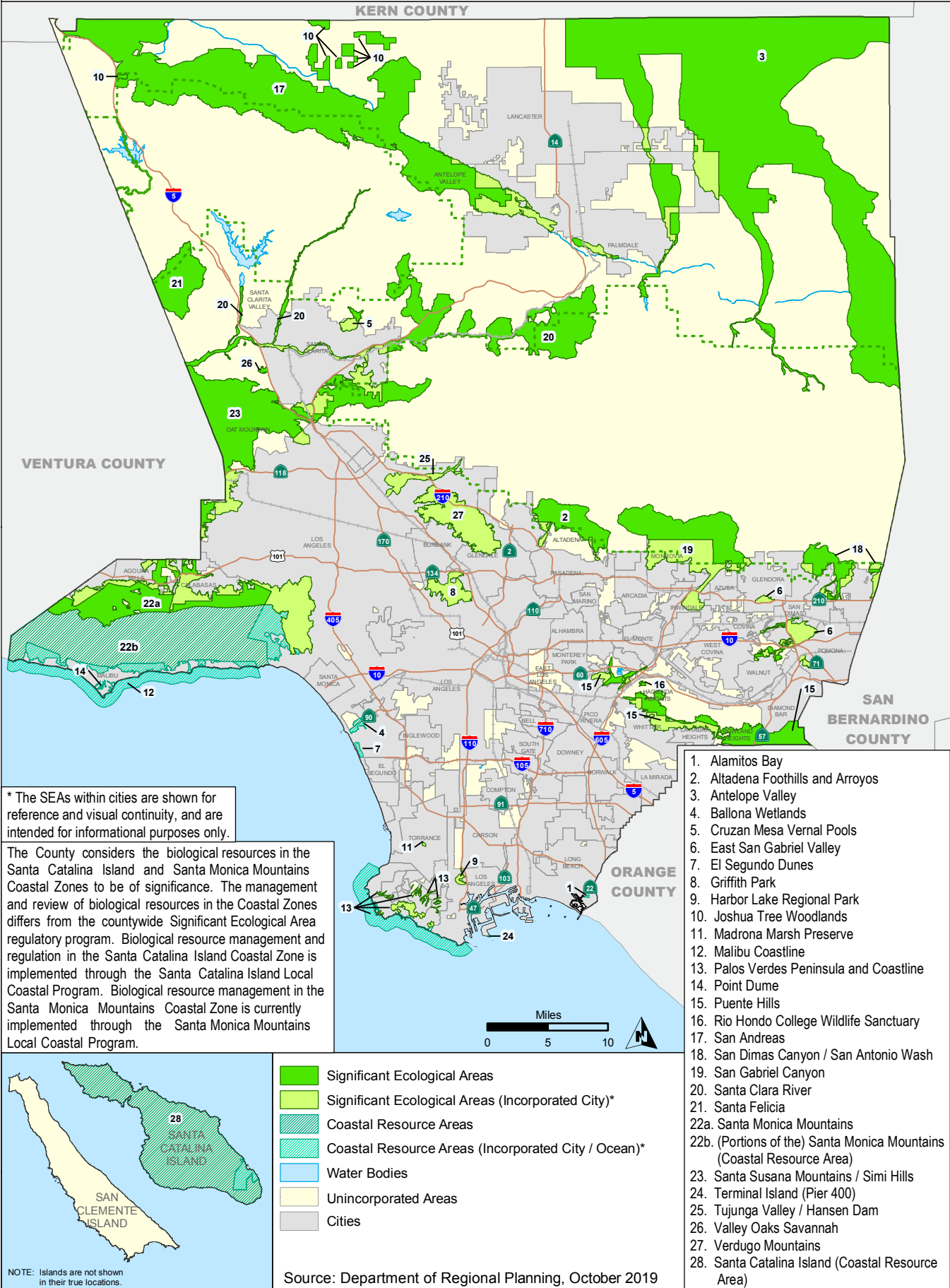


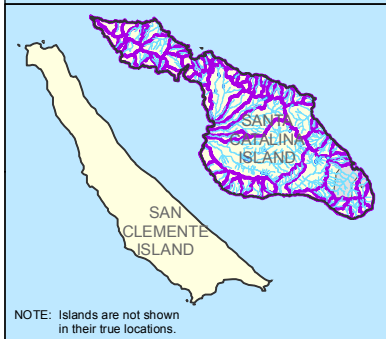
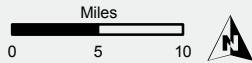
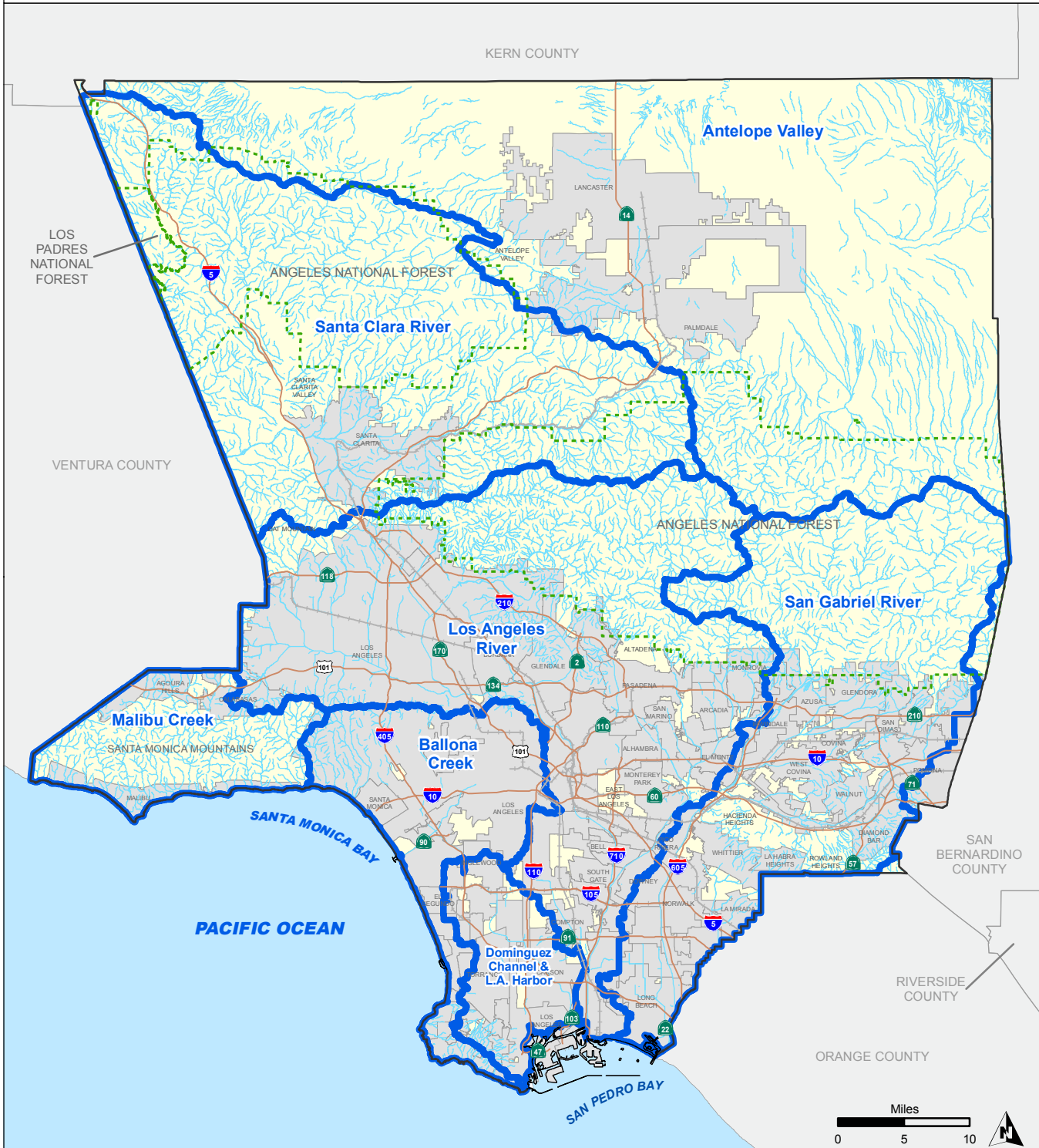
- Wildlife Movement
- Regional Wildlife Linkages
- Open Space
- Dry Water Body
- Perennial Water Body
- Intermittent Water Body
- Unincorporated Areas
- Cities

Source: Department of Regional Planning, May 2014. Additional Sources: South Coast Wildlands, USGS National Hydrography Dataset

Significant Ecological Areas and Coastal Resource Areas Policy Map

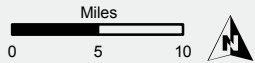
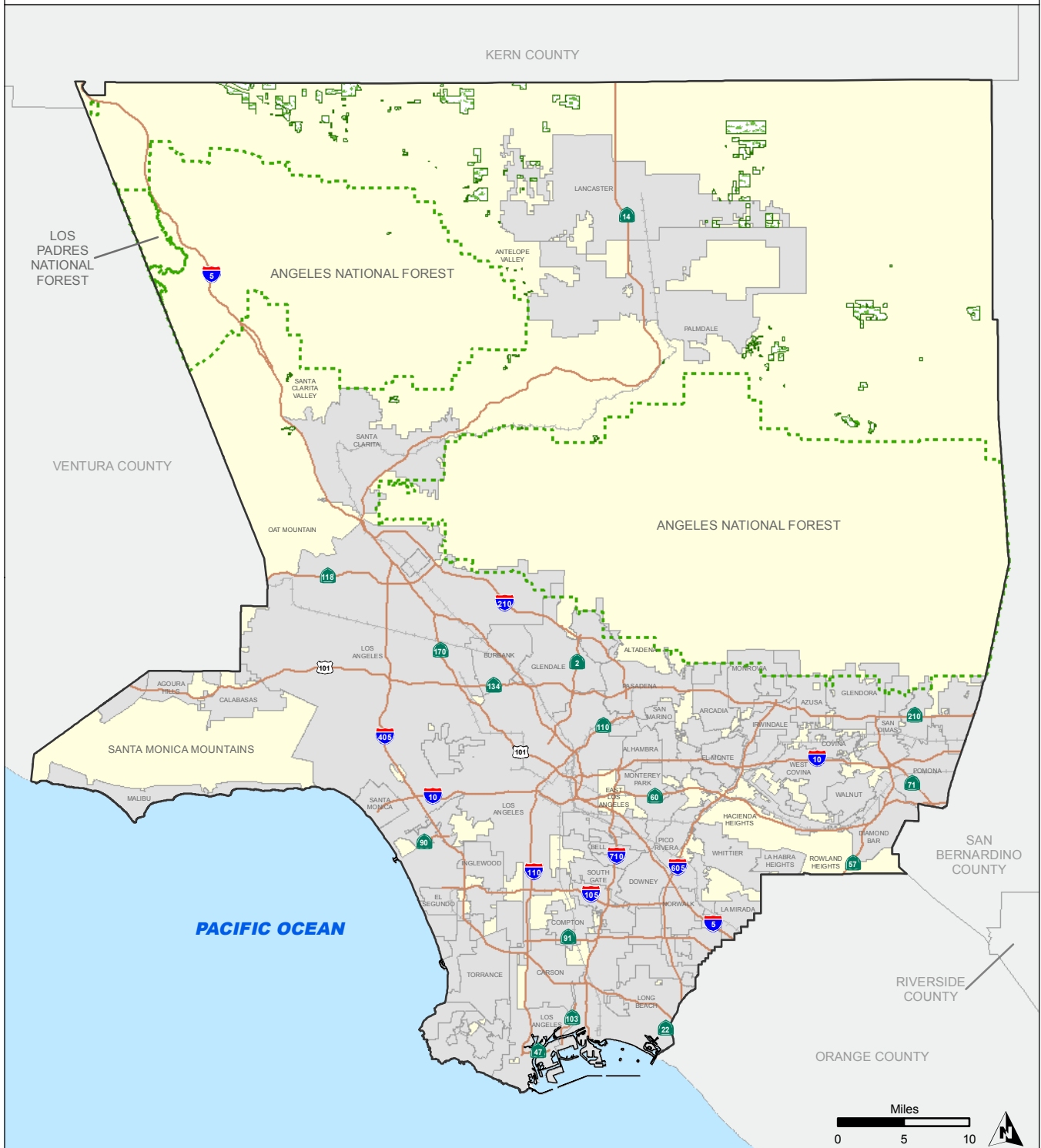
Figure 9.3



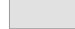




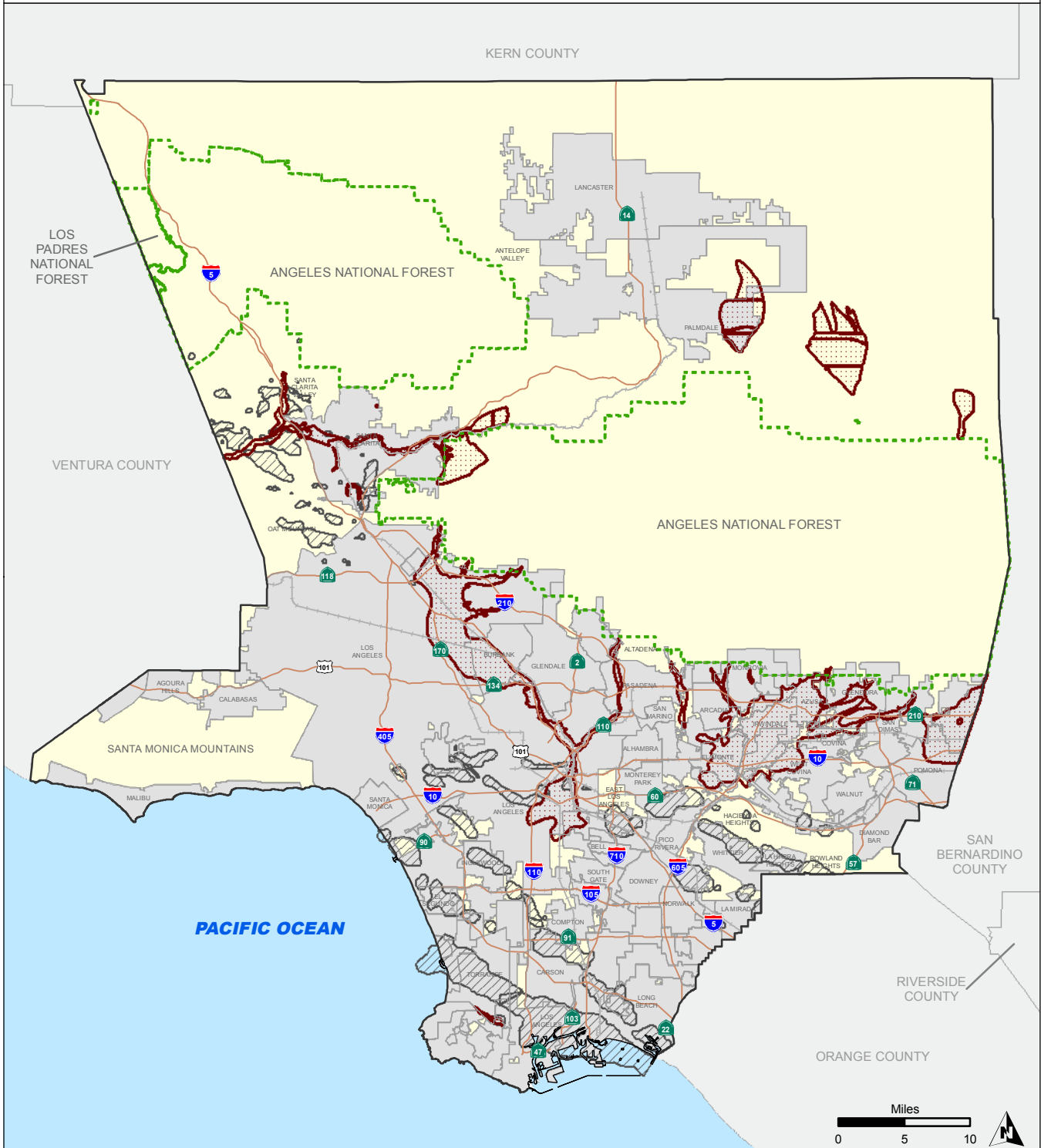
- River, Stream, or Channel*
- Watershed Management Areas**
- Catalina Watersheds***
- Catalina Reservoirs and Ponds***
- Unincorporated Areas
- Cities

Source: Department of Regional Planning, May 2014. Additional Sources: * USGS National Hydrography Dataset; ** Department of Public Works for Los Angeles County; *** Watersheds, Water Bodies (Reservoirs, Ponds, Lakes), and stream data for Catalina provided by Catalina Conservancy



-  Agricultural Resource Areas
-  Unincorporated Areas
-  Cities

Source: Department of Regional Planning, May 2014

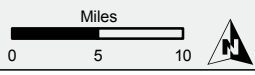
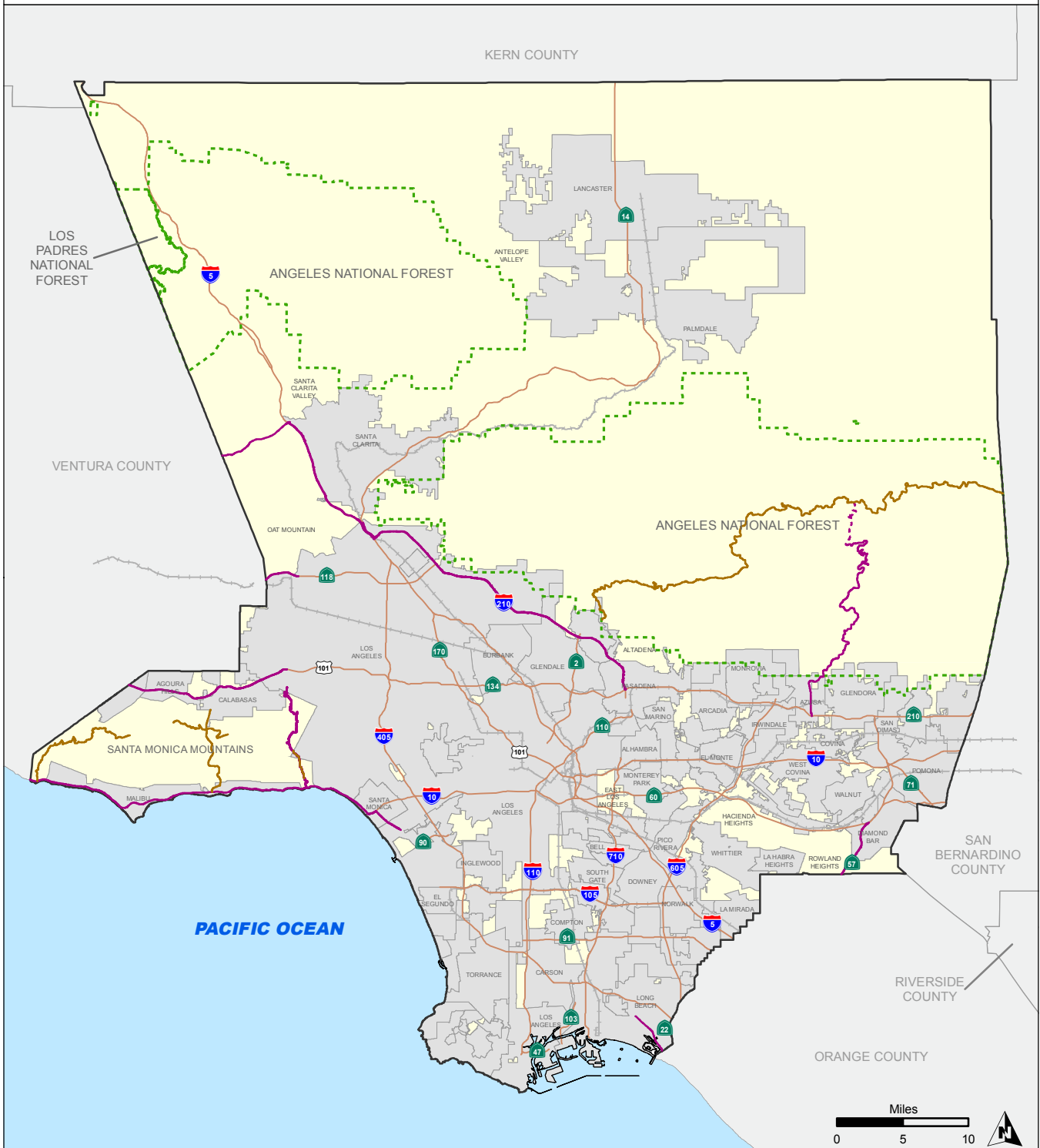


-  Mineral Resource Zones
-  Oil and Gas Resources
-  National Forest
-  Unincorporated Areas
-  Cities

Source: Department of Regional Planning, May, 2014. Additional Sources: California Energy Commission, California Department of Conservation

Scenic Highways

Figure 9.7



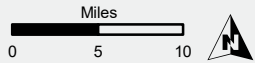
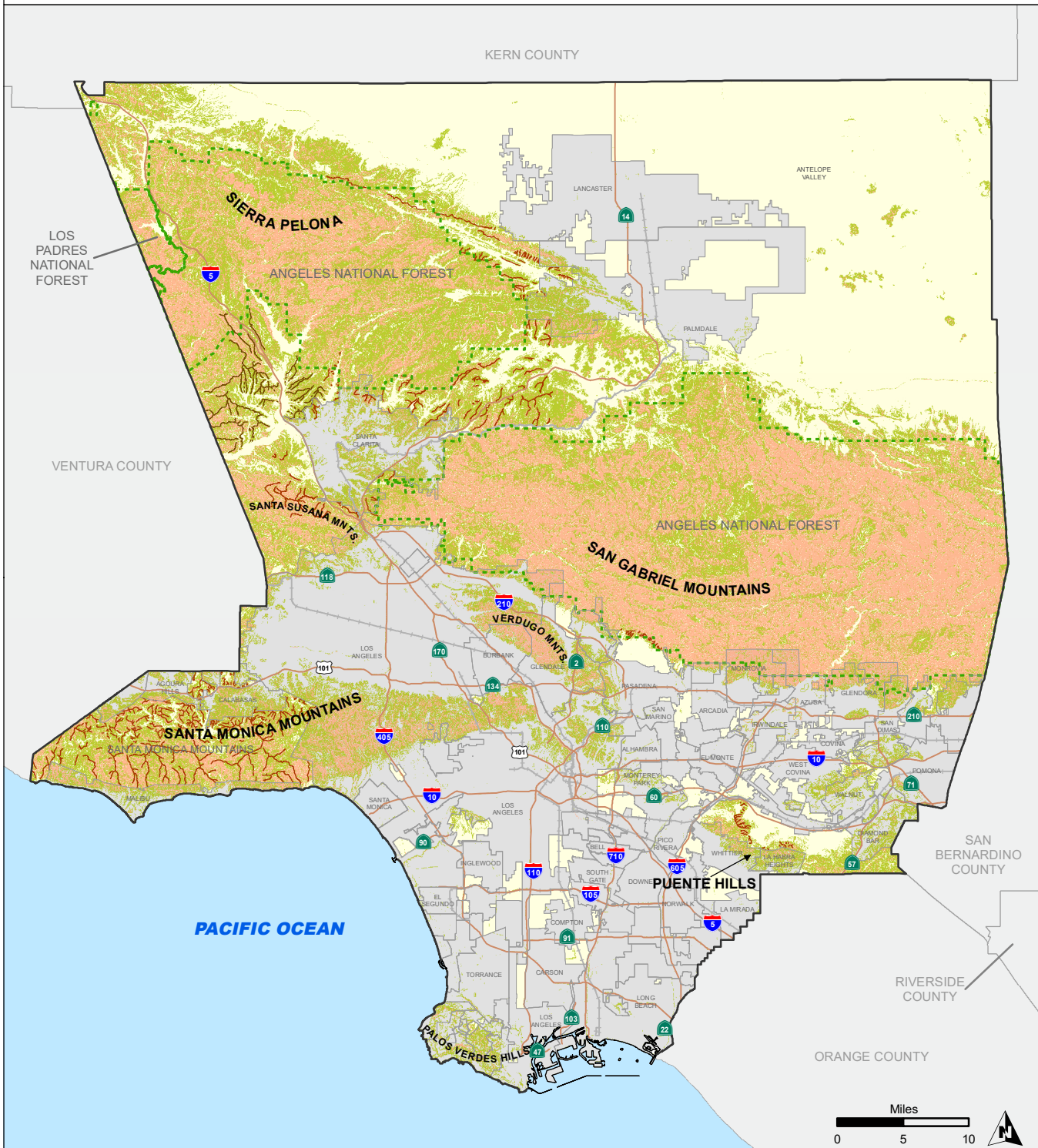
NOTE: Islands are not shown in their true locations.

- Adopted Scenic Highway
- Eligible Scenic Highway
- - - Eligible Scenic Hwy (Closed)
- Unincorporated Areas
- Cities

Source: Department of Regional Planning, March 2017. Additional Sources: California Department of Transportation

Hillside Management Areas and Ridgeline Management Map

Figure 9.8



- Castaic CSD - Primary Ridgelines
- Castaic CSD - Secondary Ridgelines
- Significant Ridgelines
- Hillside Management Area (25 - 50% slope)
- Hillside Management Area (50%+ slope)
- Unincorporated Areas
- Cities

Source: Department of Regional Planning, Sept 2021. Additional Sources: Hillside Management Area slope data was derived from a Digital Elevation Model (DEM) produced by Intermap, Inc. for the County of Los Angeles in 2001. The DEM was created using IFSAR technology with 5 meter posting.

Historic Resource Sites Policy Map

Figure 9.9



1. Altadena Town & Country Club
2. Andrew McNally House
3. Antelope Valley Indian Museum
4. Bassett Elementary School
5. Christmas Tree Lane
6. Clear Creek Vista Point
7. Crank House
8. Dominguez Adobe Ranch House
9. General Charles S. Farnsworth County Park
10. Golden Gate Theater
11. Keyes Bungalow
12. Lang Southern Pacific Station
13. Maravilla Handball Court and El Centro Grocery
14. Mentryville
15. Mount Lowe Railway
16. Oak of the Golden Dream
17. Old Ridge Route
18. Old Short Cut
19. Pacific Electric Railway Company Substation No. 8
20. Pico Canyon Oil Field Well No. 4
21. Pomona Water Powerplant
22. Rancho San Francisco
23. Scripps Hall
24. Site of Llano Del Rio Cooperative Colony
25. Soledad-Acton Schoolhouse
26. St. Francis Dam Disaster Site
27. Sylvia Park Country Club Clubhouse
28. Topanga Christian Fellowship Church
29. Vasquez Rocks
30. Woodbury Story House
31. Zane Grey Estate