

A photograph of an oil well site. On the left is a large, cylindrical metal storage tank. In the center is a pumpjack (oil pump) with a long arm and a bucket. On the right is another storage tank, this one with a green metal frame around it. The background shows a clear blue sky and some distant hills.

**Oil Well Ordinance**

**for**  
**Unincorporated**  
**Los Angeles County**

**Community Listening Session**

**December 2018**

**[planning.lacounty.gov/oilwell](http://planning.lacounty.gov/oilwell)**

**[ordstudies@planning.lacounty.gov](mailto:ordstudies@planning.lacounty.gov)**

# Introductions

---



OIL WELL ORDINANCE

COUNTY OF LOS ANGELES



# Who Is In The Audience Today?

**Are You (let us know all that apply):**

- A. A local resident
- B. A community or environmental group representative
- C. An oil industry representative



# How Far Is The Closest Oil Well to Where You Live?

---

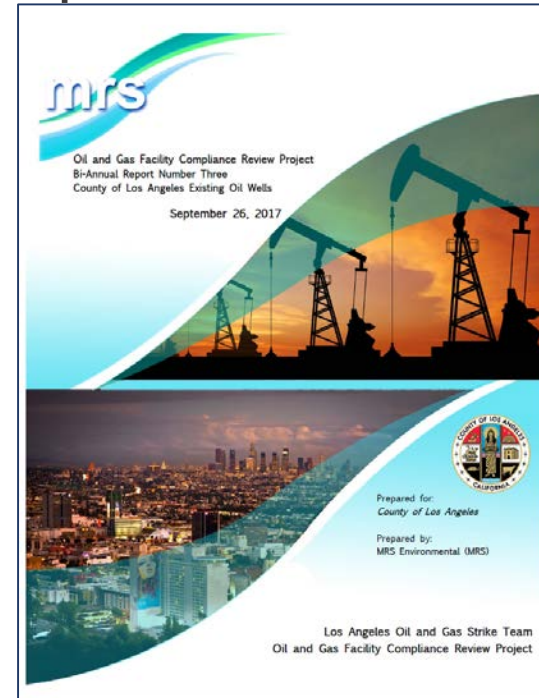
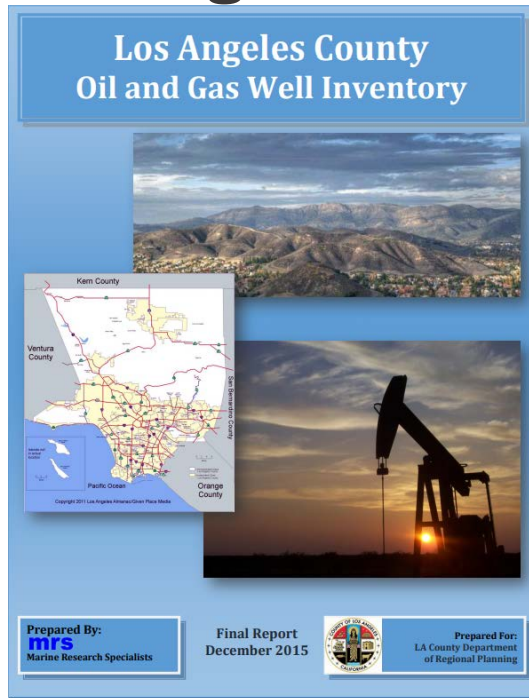
- A. 1,000 feet or less
- B. About half a mile away
- C. A mile or more away
- D. I know there is one near by. I'm not sure where.
- E. I don't know where the closest oil well is.



# LA County Board of Supervisors

## Motion March 29, 2016

1. Direct Regional Planning, Public Health, Fire Department, and Public Works to study all oil and gas wells in unincorporated LA County



# LA County Board of Supervisors

**Motion March 29, 2016**

2. Update County regulations for new and existing oil and gas wells:
  - Require a Conditional Use Permit for all new and existing oil and gas wells
    - Regional Planning
    - County Code Title 22
  - Modernize environmental protection regulations
    - Regional Planning, Public Health, Public Works, and Fire
    - County Code Titles 11, 12, 13, 22, 32, etc...



# Name A Couple of Products Made With Oil

---



OIL WELL ORDINANCE

COUNTY OF LOS ANGELES





# Oil and Oil Products

## Over 6,000 products can be made from a barrel of oil

Here are some of them:

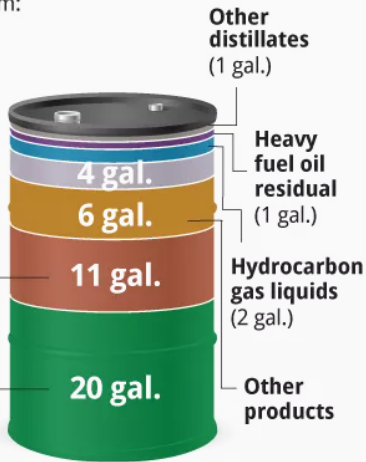
**Ultra-low sulfur (distillate)**  
to drive a large truck  
5 miles per gallon  
for almost  
**40 miles**

**Gasoline**  
to drive a medium-sized car 17 miles per gallon over  
**280 miles**

Lubricants can make about  
**1 quart**  
of motor oil

Liquefied gases like propane can be used to fill  
**12 small (14 oz.)**  
cylinders for home or camping

**1 gallon**  
of tar can be made  
from asphalt



**27**  
Crayons

## The barrel's remaining petrochemicals can be the base for:



**Note:** A U.S. gallon barrel of crude oil yields about 45 gallons of petroleum products due to the refinery's processing gain in which additional petroleum products are added during refinement.



Graphic: Rachel Nibbelger, Calgary Herald. Source: ioga.com.

Source: <https://www.dailynews.com/2017/09/11/california-oil-refineries/>



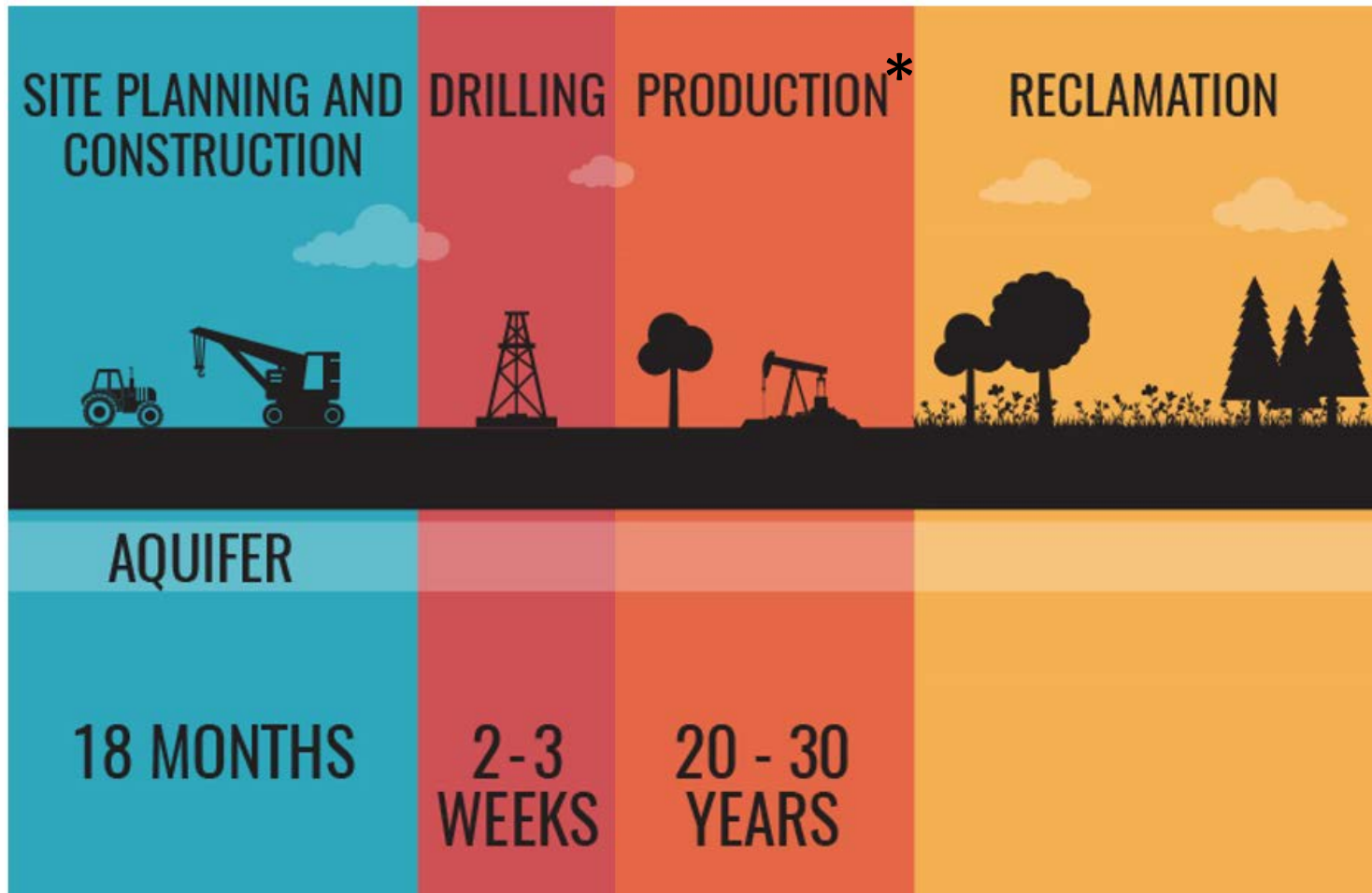
OIL WELL ORDINANCE

COUNTY OF LOS ANGELES





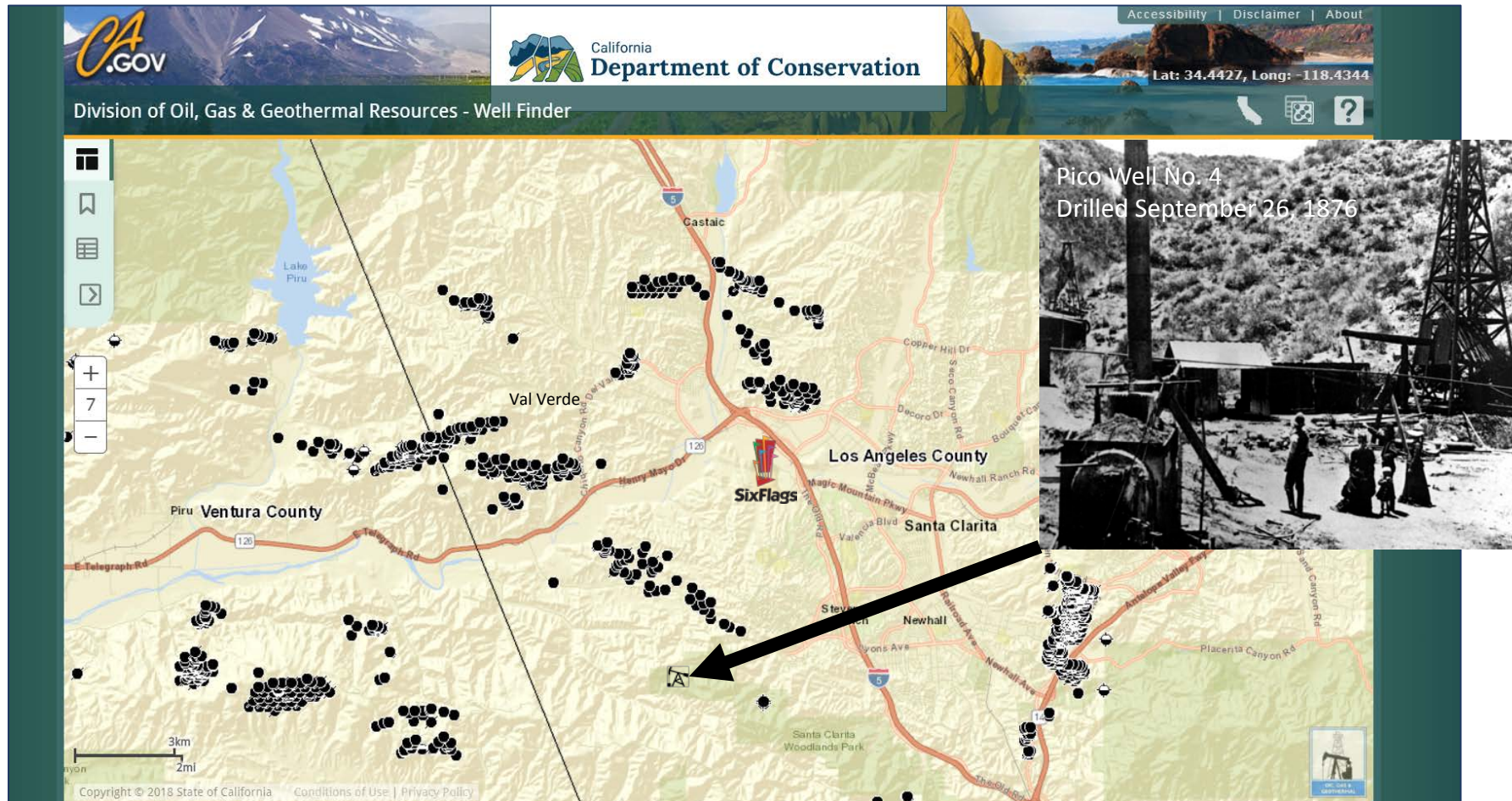
# Oil Well Process



\* May include additional periods of drilling for maintenance or stimulation



# Oil in LA County



Source: <https://maps.conservation.ca.gov/doggr/wellfinder>, <https://aoghs.org/petroleum-pioneers/first-california-oil-well/>



OIL WELL ORDINANCE

COUNTY OF LOS ANGELES





# Oil in LA County



Source: <http://www.ocarchives.com>

(circa 1920s)

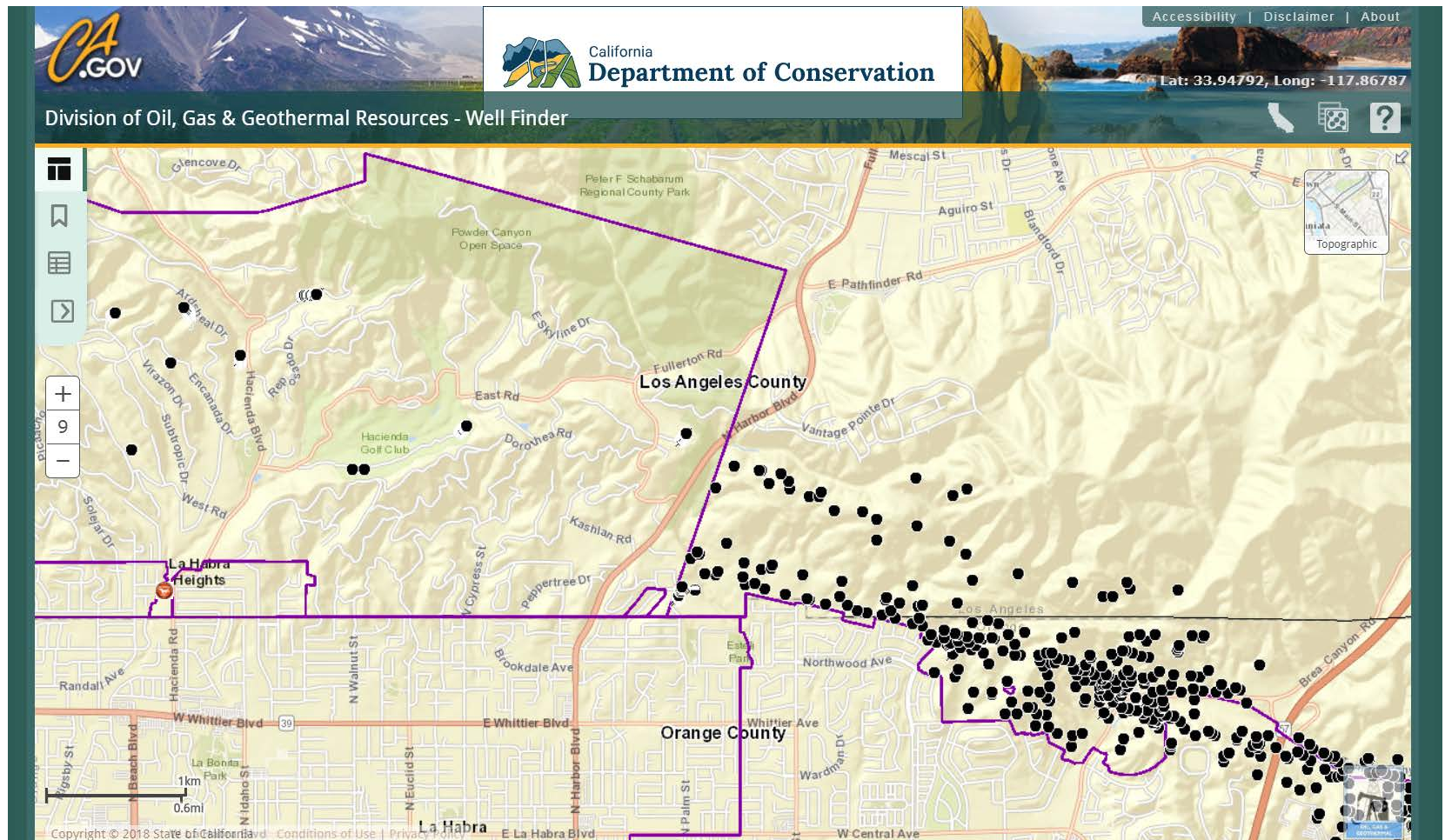


OIL WELL ORDINANCE

COUNTY OF LOS ANGELES



# Oil in LA County



Source: <https://maps.conservation.ca.gov/doggr/wellfinder>



OIL WELL ORDINANCE

COUNTY OF LOS ANGELES





# Oil in LA County

---



1957-2004

In 2015, oil in LA County was:

- \$40 billion dollar industry
- 3.6% of the total economy

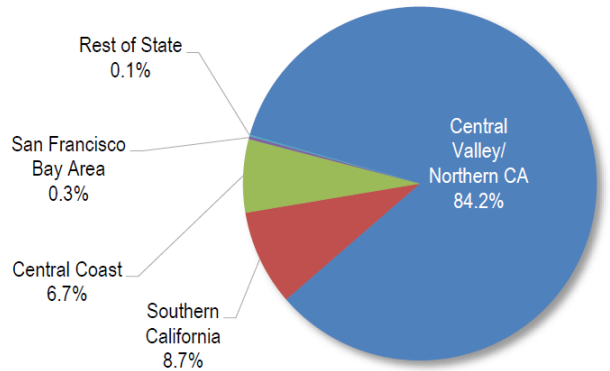
Source: Los Angeles County Economic Development Corporation



# Oil in California

**Exhibit 2-1**

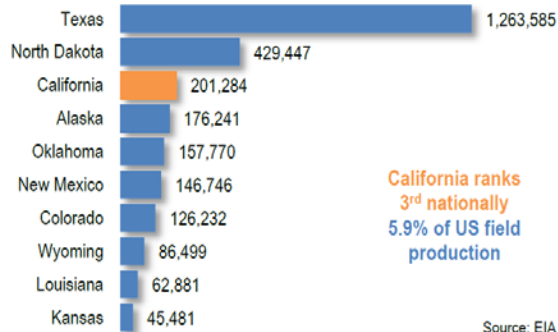
Active Wells in CA by Sub-Region 2015



Source: CA Dept of Conservation, DOGGR

**Exhibit 2-4**

Crude Oil Production 2015  
(Thousands of barrels)

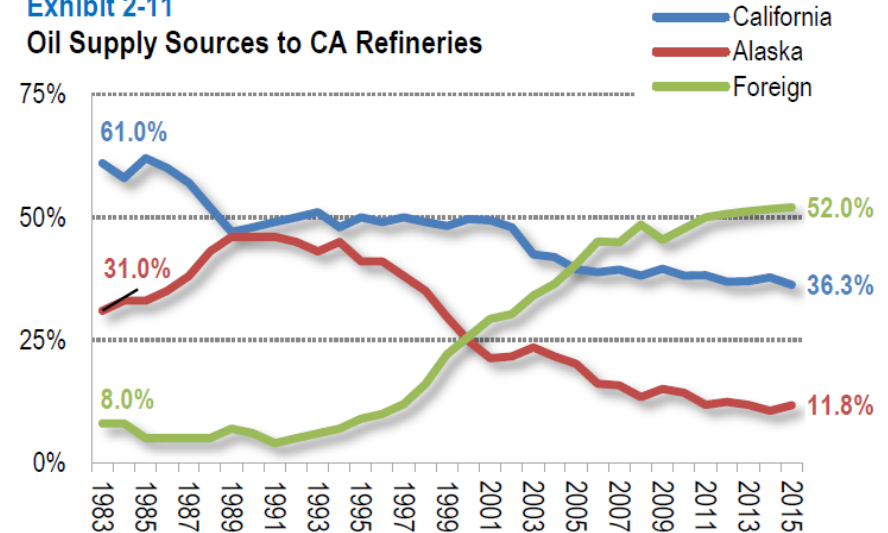


California ranks  
3<sup>rd</sup> nationally  
5.9% of US field  
production

Source: EIA

**Exhibit 2-11**

Oil Supply Sources to CA Refineries



Source: Los Angeles County Economic Development Corporation



OIL WELL ORDINANCE

COUNTY OF LOS ANGELES



# Are You Familiar With How Oil Wells Are Regulated?

---

- A. Not very familiar
- B. Somewhat familiar
- C. Very familiar





# Regulations in California

## 1. Division of Oil, Gas, Geothermal Resources (DOGGR)

Permit to drill  
Surface Equipment Permits (mechanical integrity)  
Bonding Required  
Inspections (unannounced)  
SB 4—Standalone permit/application for well stimulation  
Idle Well Programs/Assessments  
Ground water monitoring/reporting

## 2. Air Pollution Control Board

Reporting & notification for drilling & stimulation  
Vapor control fixed facility (tanks, pipelines)  
Flares (permits)  
Annual emissions report  
Quarterly fugitive emissions report (3rd party)  
Permits and Inspections (unannounced)

## 3. Fire Department

Permits for producing wells  
Bonding  
Hazardous Material Business Plans  
Inspections (unannounced)

## 4. CAL-OSHA

Inspections of equipment (pressure vessels)  
Worker Safety-HAZCOM Program

## 5. State Water Quality Control Board

Injection well application review  
Well Stimulation Ground Water Monitoring Plans  
Storm Water Run-off permit (construction of pad)  
Inspections (unannounced)

## 6. CA Air Resources Board

Cap & Trade Compliance (Reporting and Credit Purchases)  
Inspection for validation of records (3rd party)  
Methane Rule

## 7. Local City/County

Zoning Administration Public Hearing/Permit (CUP/CEQA)

## 8. State Fire Marshall/Dept. of Transportation

Pipeline permit/franchise  
Monitors workers (drug/qualification testing)

## 9. Sanitation Department

Water discharge (permit)

## 10. Department of Water and Power

Inspects backflow prevention devices

## 11. USEPA

Spill Prevention Control & Counter Measure Plans  
Inspection and Audits  
Aquifer Exemptions

## 12. CA Department of Fish & Wildlife

Endangered Species Regulations  
Habitat Conservation Plan/Land Bank

## 14. Office Spill Prevention and Response

Spill prevention contingency and emergency response action plan (on & offshore)  
Bonds  
Conducts annual training drill  
Witnesses the Drill

## 15. Homeland Security

Hazardous Material Handling & Transportation Plan (anti-terrorism standards)

## 16. Dept. Toxic Substance Control/Cal-EPA

Solid Waste Management & Discharge  
Annual Reconciliation (Hazardous/non-Hazardous)  
Inspections

## 17. DMV Permits/CHP

Motor Carrier Permits (over 10k gross)  
Rig movement permits  
Inspections by CHP

## 18. CA Office of Emergency Services

Emergency response

## 19. Offshore Operations add:

- a. State Lands Commission
- b. CA Coastal Commission
- c. Bureau of Ocean Energy management
- d. Bureau of Safety and Environmental Enforcement

## 20. Regional Water Quality Control Board

- a. Sump testing/permitting
- b. Inspections

Source: Sentinel Peak Resources



OIL WELL ORDINANCE

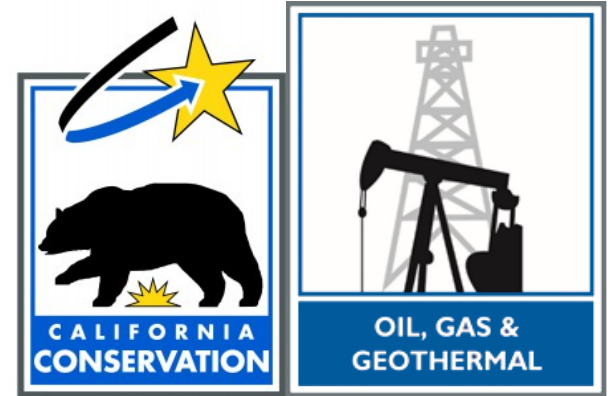
COUNTY OF LOS ANGELES



# State Regulations: DOGGR

- Regulates drilling operations and closure of oil wells

\*Does not regulate time of operations or location of wells\*



- Regulations added in 2018
  - January 2018 – Idle Well Program
  - July 2018 – Office of Enforcement
  - October 2018 – New regulations for pipelines and underground gas storage



# State and Regional Regulations

---

- Air quality
- Groundwater/underground aquifers
- Spill prevention and response
- Worker safety



# County Regulations

---

- Time, place, manner
  - Noise
  - Hours of Operation
  - Setbacks
  - Odor
  - Materials
- Can regulate aboveground activities where not pre-empted by state and regional agencies












## January 2016

**LEGEND:**

### Oil or Gas Well

### Base Features

-  Supervisorial District  
 Unincorporated Area  
 City Boundary  
 National Forest  
 Perennial Water Body  
 Intermittent Water Body  
 Dry Water Body

Source of oil well data is the California Department of Conservation, Division of Oil, Gas & Geothermal Resources ([www.conservator.ca/nr/oil.html](http://www.conservator.ca/nr/oil.html)).

## VICINITY MAP:



LOS ANGELES COUNTY  
Dept. of Regional Planning  
320 W. Temple St.  
Los Angeles, CA 90012

Date Created: 10/13/2016



PROJECTOR LAND USE REGULATIONS information: [www.projects.gov](http://www.projects.gov), [www.projects.ca](http://www.projects.ca), [www.projects.org](http://www.projects.org)

NOTE: Santa Catalina Island is not shown in it's true location  
San Clemente Island is not shown on this map.

# County Regulations: Regional Planning

---

- Title 22: Planning and Zoning
  - Regulations for land use
  - Development standards
- Per BOS direction, require a Conditional Use Permit for oil wells in all zones and update development standards



# County Regulations: Regional Planning

---

- Requirements for oil wells in today's Zoning Code:
  - Ministerial Site Plan Review: Zones A-2, M-1, M-1.5, M-2
  - Conditional Use Permit: Zones R-1, R-2, R-3, R-4, R-A, A-1, C-H, C-1, C-2, C-3, C-M, C-R, C-RU, M-2.5, R-R, O-S, and W
- Most permits only have 14 development standards from 1978, including:
  - Setbacks for oil wells from buildings (300 feet) and streets (20 feet)
  - Removal of equipment within 90 days after drilling ends
  - No deliveries between 6 pm and 8 am
- The Oil Well Ordinance will update these standards





# County Regulations: Public Health

---

- Title 11: Health and Safety
- Title 12: Environmental Protection
- Goals for revising Titles 11 and 12
  - Align with changes to Title 22
  - Align with Strike Team recommendations
  - Focus on health and safety protection



# County Regulations: Fire Department

---

- Title 32: Fire Code
  - Annual permits for all wells
  - Minimum setbacks for oil wells and equipment from buildings and roads
  - Handling of hazardous materials and waste materials
  - Signage for operator and contact information



# County Regulations:Challenges

- New oil wells
- Existing oil wells



Residential area was developed in 1990s

Oil wells have been in the area since 1880



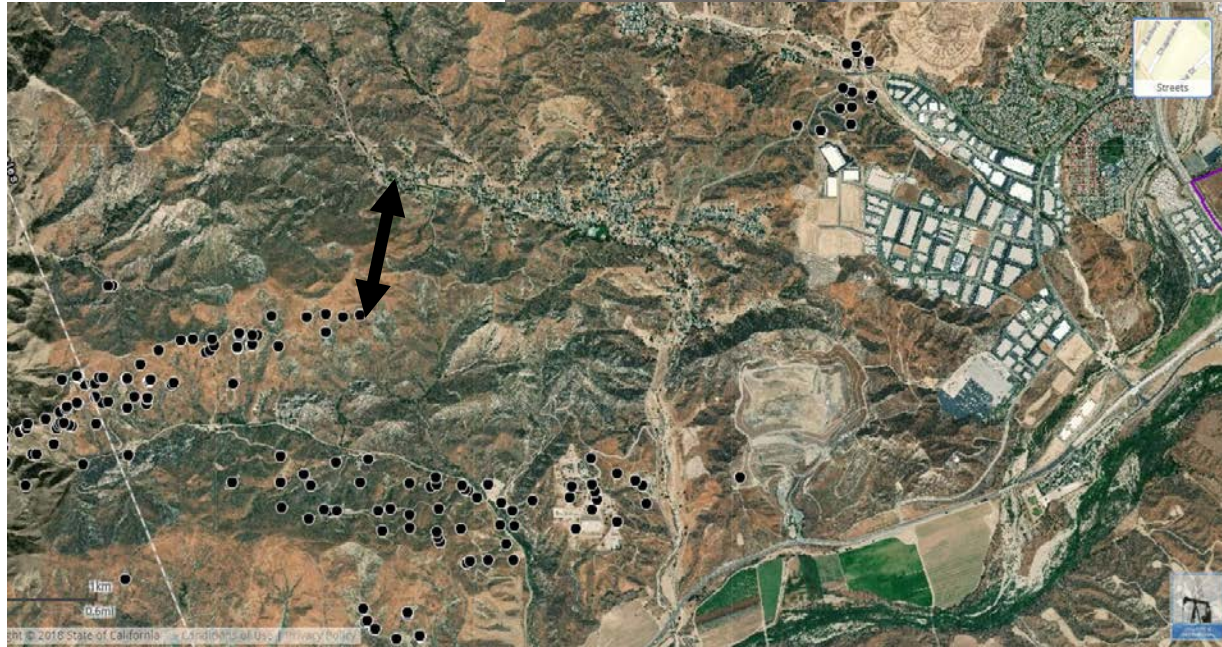


# County Regulations: Challenges

- Urban/suburban oil wells
- Rural oil wells



Distance between  
closest oil well and  
San Martinez Road  
and Delwood Road:  
4,000 ft



OIL WELL ORDINANCE

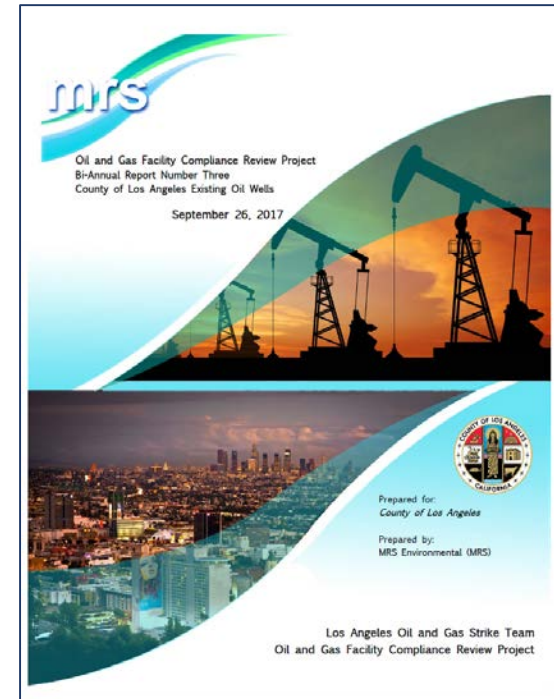
COUNTY OF LOS ANGELES



# Strike Team Recommendations

---

- Community communication
- Air quality and odor monitoring
- Setbacks
- Noise



Report is available at: <http://planning.lacounty.gov/oilwell/documents>



OIL WELL ORDINANCE

COUNTY OF LOS ANGELES



# Obtain Community Comments

---

LA County Staff is here to listen and record your comments. We are not here to argue or debate

- All comments are welcome
- Keep comments brief
- One person at a time
- Allow each other to participate

