

# COUNTY OF LOS ANGELES

## SIGNIFICANT ECOLOGICAL AREAS PROGRAM

### Significant Ecological Areas (SEA) and Coastal Resource Areas

January 2022

#### LEGEND:

- Significant Ecological Areas
- Significant Ecological Areas (Incorporated City)\*
- Coastal Resource Areas \*\*
- Coastal Resource Areas (Incorporated City / Ocean)\*

#### Base Features

- Unincorporated Area
- City Boundary
- National Forest
- Perennial Water Body
- Intermittent Water Body
- Dry Water Body

#### SIGNIFICANT ECOLOGICAL AREA:

- Altadena Foothills and Arroyos
- Antelope Valley
- Cruzan Mesa Vernal Pools
- East San Gabriel Valley
- Griffith Park
- Harbor Lake Regional Park
- Joshua Tree Woodlands
- Madrona Marsh Preserve
- (Portions of the) Palos Verdes Peninsula and Coastline
- Puente Hills
- Rio Hondo College Wildlife Sanctuary
- San Andreas
- San Dimas Canyon / San Antonio Wash
- San Gabriel Canyon
- Santa Clara River
- Santa Felicia
- (Portions of the) Santa Monica Mountains

#### SIGNIFICANT ECOLOGICAL AREA:

- Santa Susana Mountains / Simi Hills
- Tujunga Valley / Hansen Dam
- Valley Oaks Savannah
- Verdugo Mountains

#### COASTAL RESOURCE AREA:

- Alamitos Bay
- Baltona Wetlands
- El Segundo Dunes
- Malibu Coastline
- (Portions of the) Palos Verdes Peninsula and Coastline
- Point Dume
- (Portions of the) Santa Monica Mountains
- Santa Catalina Island
- Terminal Island (Pier 400)

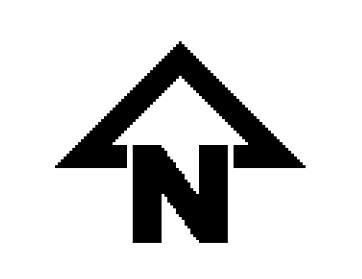
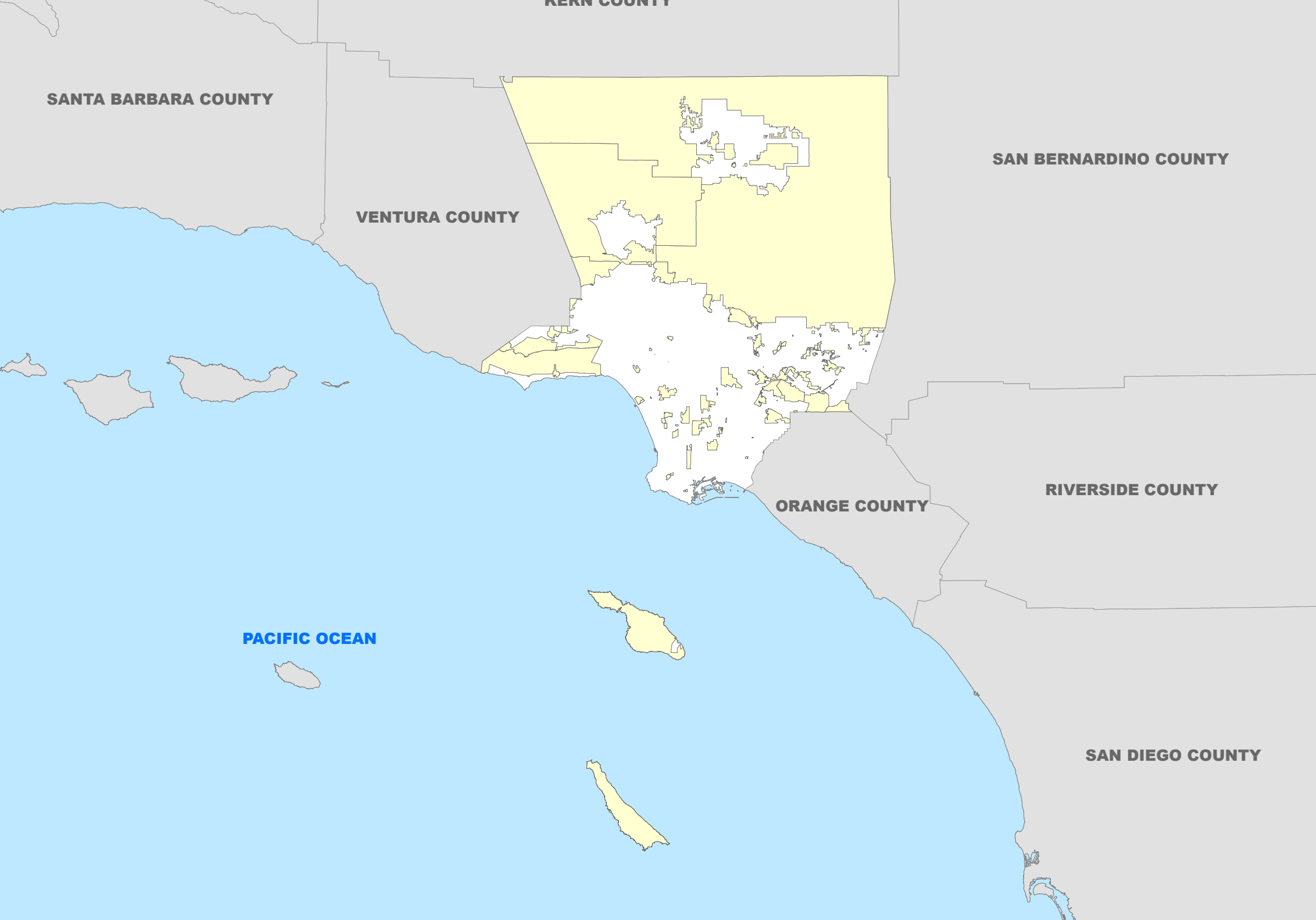
#### \* SEAs WITHIN CITIES:

Emphasis is given for the Significant Ecological Areas in the unincorporated areas. Therefore, any SEA within an incorporated city will have a more muted green color.

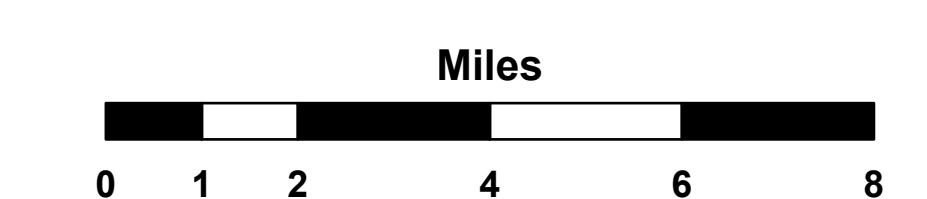
#### \*\* COASTAL ZONE REGULATORY INFORMATION:

The County considers the biological resources in the Santa Catalina Island and Santa Monica Mountains Coastal Zones to be of significance. The management and review of biological resources in the Coastal Zones differs from the countywide Significant Ecological Area regulatory program. Biological resource management and regulation in the Santa Catalina Island Coastal Zone is implemented through the Santa Catalina Island Local Coastal Program. Biological resource management in the Santa Monica Mountains Coastal Zone is currently implemented through the Santa Monica Mountains Local Coastal Program (LCP).

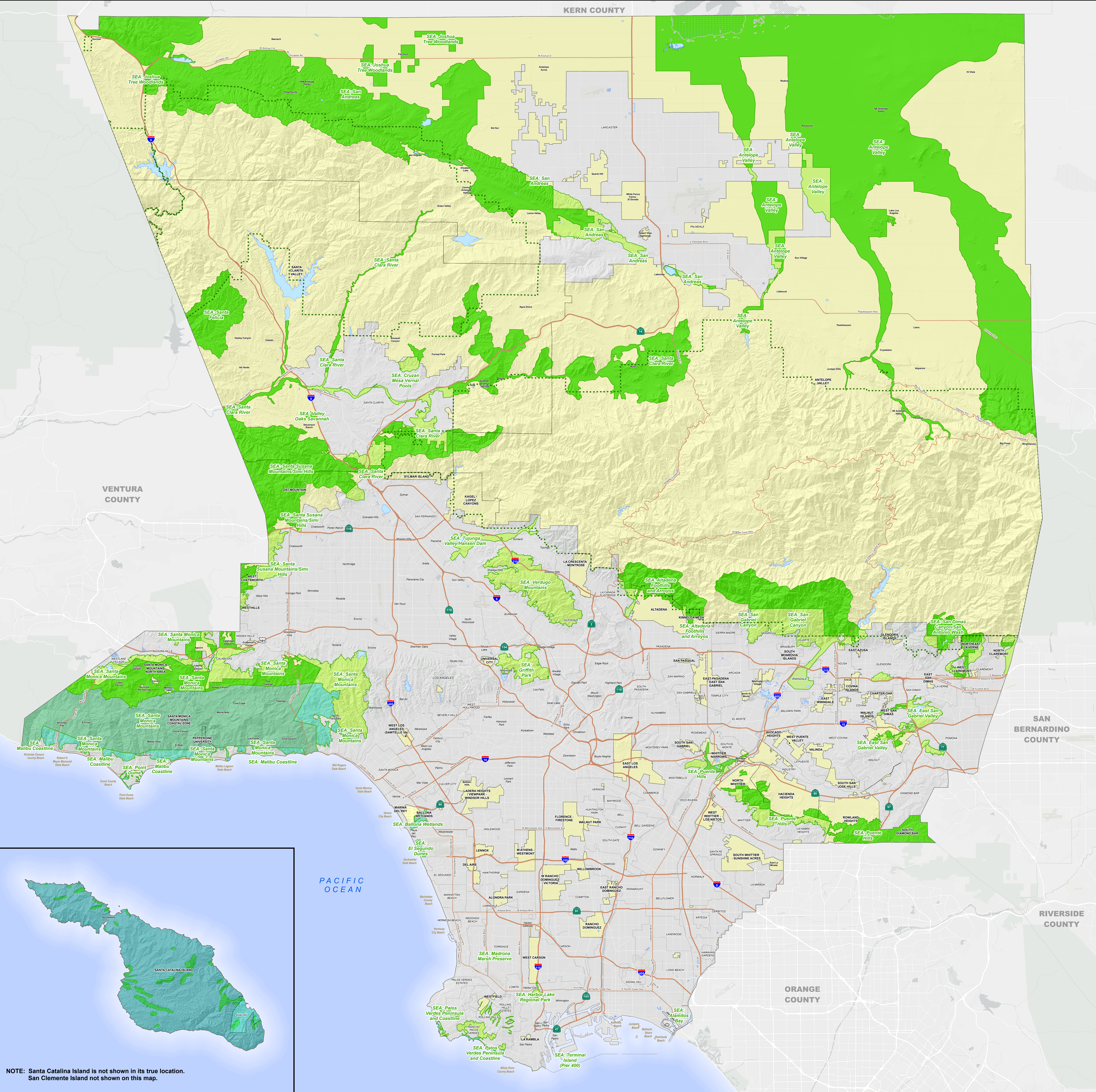
#### VICINITY MAP:



LOS ANGELES COUNTY  
Department of Regional Planning  
263 W. Temple St.  
Los Angeles, CA 90012



Date Updated: 3/1/2022



NOTE: Santa Catalina Island is not shown in its true location.  
San Clemente Island not shown on this map.