

# COUNTY OF LOS ANGELES SUPPLEMENTAL DISTRICTS

- Community Standards Districts
- Equestrian Districts
- Flood Protection Districts
- Historic Districts\*
- Rural Outdoor Lighting Districts
- Setback Districts

January 2022

### LEGEND:

<b>Supplemental Districts</b>	Land Types - Place of Interest
Community Standards District	<b>Transit Lines</b>
Equestrian District	Metrolink
Flood Protection District	Orange Line Transitway
Setback District	Silver Line Transitway
Rural Outdoor Lighting District	Blue Line
Historic Districts	Crenshaw / LAX (Construction)
<b>Base Features</b>	Exposition
Freeway	Exposition (Construction)
Highway	Gold Line
Primary or Secondary Road	Gold Line (Construction)
Railroad	Gold Line (Planned)
Supervisory District	Green Line
Incorporated City	Red Line
Cities - Unincorporated (Shaded)	Purple Line
National Forest	Purple Line (Construction)
Land Types - Regional Park or Garden	Red / Purple Line
Land Types - Beach or Marina	Regional Connector (Construction)

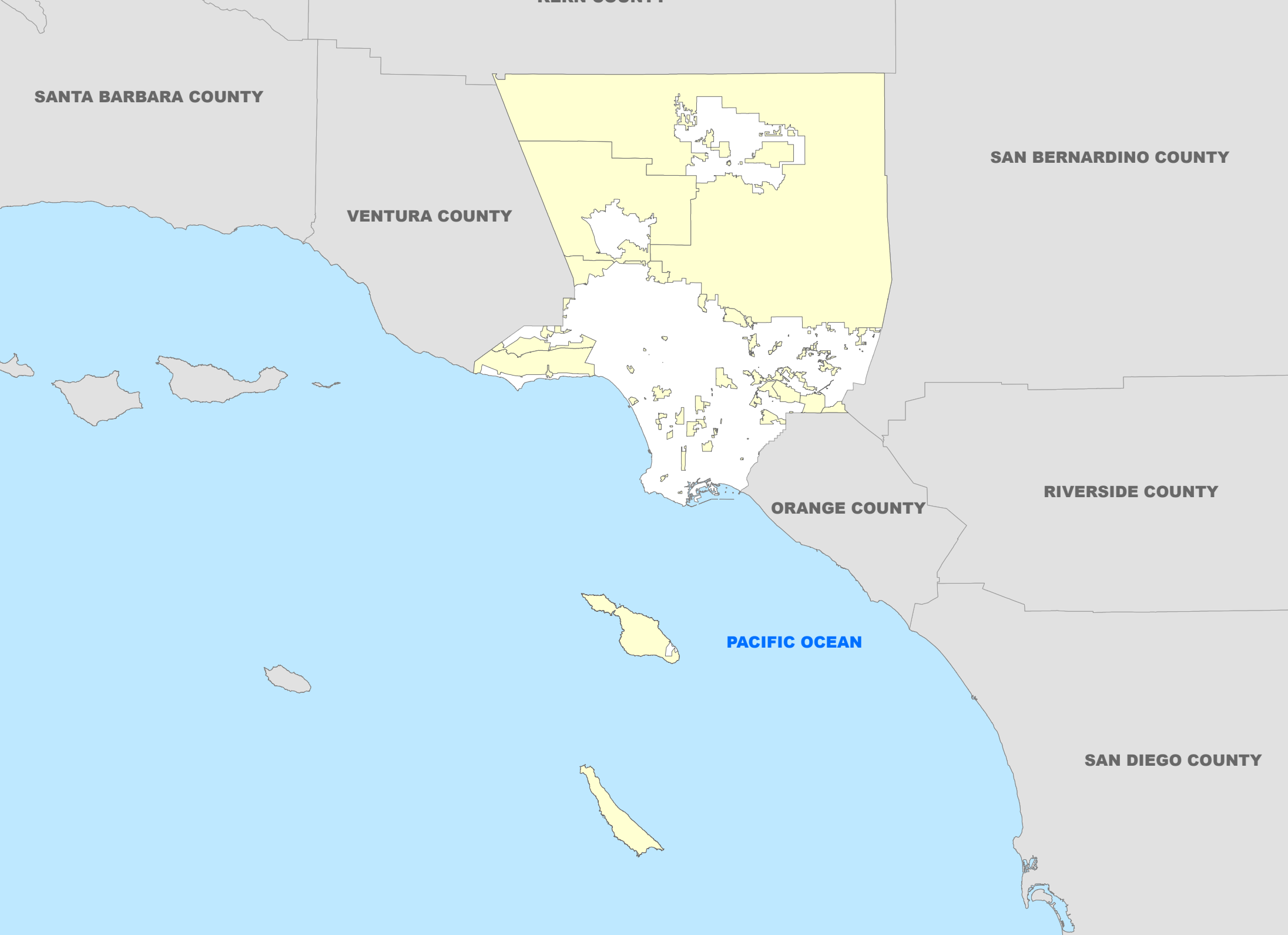
COMMUNITY STANDARDS DISTRICT (CSD)			EQUESTRIAN DISTRICT (EQD)		
ID #	District Name	Adopted Date	ID #	District Name	Adopted Date
1	Acton	11/21/1995	1	Avocado Heights	4/9/1991
2	Agua Dulce	7/30/1985	2	Beverly Acres	12/28/1938
3	Altadena	12/12/2017	3	Kimmel Mesa	4/26/1977
4	Avocado Heights	10/28/2003	4	Pelissier Village	7/27/1976
5	Baldwin Hills	10/24/2008	5	Rancho Povero De Felipe Lugo	12/21/1976
6	Castaic Area	11/30/2004	6	Trailside Ranch	4/4/1978
7	Cerritos Island	7/12/2010	7	West Altadena	2/17/1976
8	East Los Angeles	4/26/1988			
9	East Pasadena - East San Gabriel	8/22/2002			
10	East Rancho Dominguez	5/21/1985			
11	Elizabeth Lake & Lake Hughes	7/30/2009			
12	Florence-Firestone	6/22/2004			
13	Green Valley	8/10/2021			
14	Juniper Hills	6/26/2007			
15	La Cresswell-Mantrose	12/30/2007			
16	Leona Valley	8/10/2021			
17	Rowland Heights	11/27/2001			
18	San Francisco Canyon	12/10/2009			
19	Santa Monica Mountains North Area	9/19/2002			
20	South San Gabriel	2/27/2003			
21	Southwest Antelope Valley	6/26/2007			
22	Stonyvale	8/23/2011			
23	Twin Lakes	5/9/1991			
24	Walnut Park	9/24/1987			
25	West Athens - Westmont	7/21/1990			
26	West Rancho Dominguez - Victoria	11/14/2000			
27	Willowbrook	3/15/1994			

\* The Historic Preservation Ordinance was adopted on 9/1/2015 by the Board of Supervisors, however, as of early 2016, no district boundaries have yet been established.

NOTES:  
"Supplemental Districts" are derived from the Los Angeles County Code, Title 22 Planning and Zoning, Section 22.44.010. The purpose of Supplemental Districts is to carry out specific purposes by regulating specific uses and imposing requirements that apply in designated geographic areas.

Written comments and supporting documentation should be submitted to the Department of Regional Planning Ordinance Studies Section (address: 320 W. Temple Street, 13th floor Los Angeles, CA 90012; tel: 213-974-6432; or email: OrdStudies@planning.lacounty.gov).

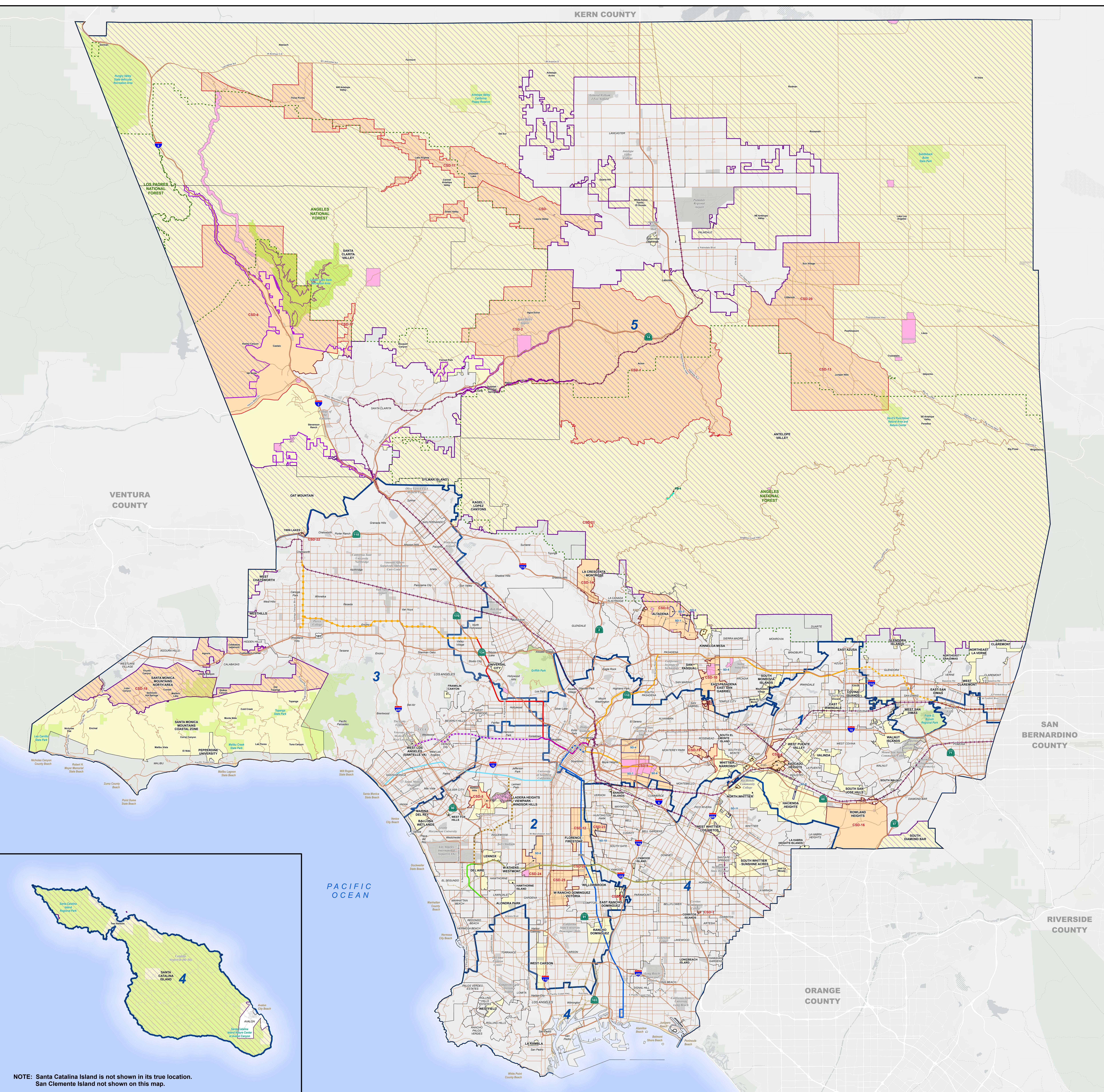
### VICINITY MAP:



LOS ANGELES COUNTY  
Department of Regional Planning  
320 W. Temple St.  
Los Angeles, CA 90012

Date Updated: 3/1/2022

Miles  
0 1 2 4 6 8



NOTE: Santa Catalina Island is not shown in its true location.  
San Clemente Island not shown on this map.