



UPDATE

Community Advisory Panel (CAP) Baldwin Hills Health Assessment and Environmental Justice Study

February 25, 2021

Christine De Rosa

Division of Environmental Health,
Toxicology & Environmental Assessment

**Erica Blyther, Paul Ferrazzi, Liz Gosnell,
Charles McCaw, Melanie Doran Traxler**
Baldwin Hills Steering Committee Members





Purpose

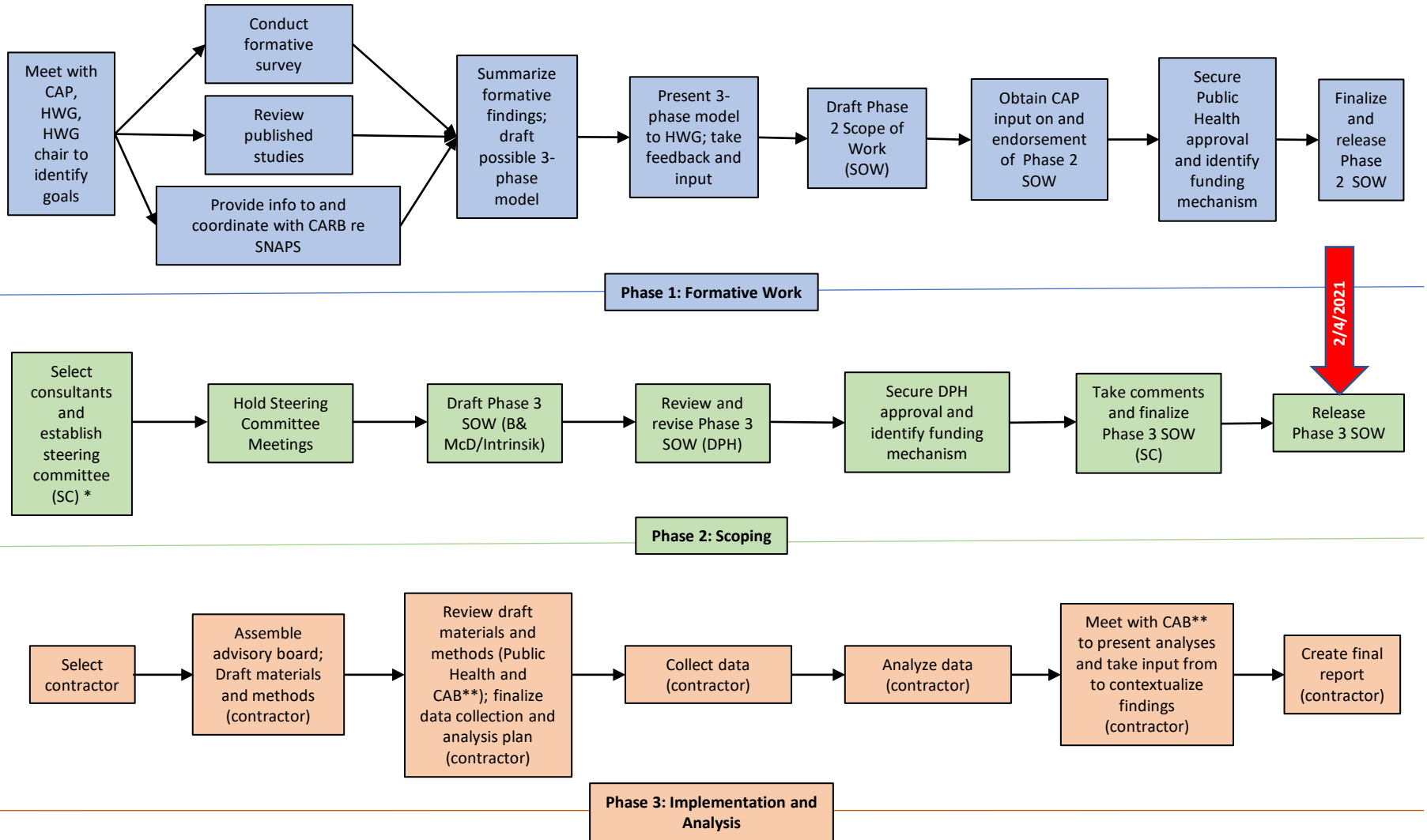
- Provide an overview of the Baldwin Hills Community Health Assessment and Environmental Justice Study solicitation development process
- Discuss Steering Committee recommendations and Work Order Solicitation requirements
- Explain next steps
- Q&A



CAP Recommendations for this Assessment, per CAP April 6, 2018 Letter to Public Health

Length of Residency	Communities Most Likely to be Impacted	Environmental Justice	Health Outcomes	Community Engagement
<p>Stratify results by length of residency.</p> <p>Create a sample of mostly long-term (>10 years) residents</p>	<p>Identify which communities are most likely to be impacted by oil field pollutants.</p> <p>Stratify by quarter-mile increments in distance from the oil field.</p>	<p>Adjust for socio-economic status (race, income, education).</p> <p>Analyze community engagement in decision-making around oil field.</p> <p>Test for disproportionate impact.</p>	<p>Articulate how and why health indicators are chosen.</p> <p>Address short- and long-term health outcomes</p>	<p>Engage community members in a constructive dialog.</p> <p>Encourage and include community members' recommendations.</p>

Baldwin Hills CAP Assessment: Overview of Process



*Steering consisted of 3 expert consultants; CAP Health Working Group members; DPH staff; CARB representative(s).

**CAB membership to be determined by CAP, Health Working Group, and Contractor



Contractor: Burns & McDonnell¹

Purpose

To support the scoping phase, including community engagement.

- Project Management
 - Hire expert consultants
- Document Review
- Meeting Facilitation
- First draft of Assessment Scope of Work
 - Subcontractor Intrinsik²: Review and summarize technical documents; draft of Scope of Work

1. Burns & McDonnell Engineering, Inc. , <https://www.burnsmcd.com/>

2. Intrinsik, <https://intrinsik.com/>



Project Management Lead and Meeting Facilitator, Jennifer Trotter, Burns & McDonnell

- Expertise in community engagement and relations; public involvement; urban planning; business diversity
- Board Member and Los Angeles Chapter Co-Founder, International Association for Public Participation (IAP2) USA
- Role:
 - Interviewed each Steering Committee member prior to meeting start up
 - Summarized concerns/aspirations to shape the discussion and decision-making process
 - Planned, coordinated and facilitated meetings
 - Created final report of Steering Committee process

Steps to Select Independent Experts



*HWG developed a survey asking about impartiality, commitment, scientific rigor, familiarity with air studies and agency reports, expertise in community-based participatory research, environmental justice and their current work.



Steering Committee

CAP Representatives

- Erica Blyther
- Paul Ferrazzi
- Liz Gosnell
- Charles McCaw
- Melanie Doran Traxler

Expert Consultants

- Debra Bright Stevens, Environmental Audit, Inc.
- Jill Johnston, USC
- Seth Shonkoff, PSE Healthy Energy

Public Health + Other Agencies

- Carrie Tayour, Christine De Rosa, LAC Public Health
- Carolyn Lozo, Kathleen Kozawa, Jonathan Blufer, California Air Resources Board (CARB)
- JoKay Ghosh, Nico Schulte, South Coast Air Quality Monitoring District (SCAQMD)

Non-Committee Observers

- Tim Stapleton, LAC Regional Planning
- B&McD and Intrinsik Staff

Note: for further details on Committee members, see the Final Report.



Steering Committee Meetings

Meeting No.	Meeting Date	Main Topics
1	October 22, 2019	<ul style="list-style-type: none">• Introduce participants and make decisions on processes.• Begin discussions on assessment design.
2	November 5, 2019	<ul style="list-style-type: none">• Review 2012 Assessment and related documents.• Consider potential health outcomes.
3	November 19, 2019	<ul style="list-style-type: none">• Review air quality-related documents.• Listen to an overview of CARB SNAPS.• Hear about possible methodologies that other researchers have used.
4	December 17, 2019	<ul style="list-style-type: none">• Review sources, strengths, and limitations of data available• Discuss and consider expert consultants' recommendations.
5	January 14, 2020	<ul style="list-style-type: none">• Discuss environmental justice and environmental racism concerns.• Make decisions on key elements of assessment.



Information Considered by the Steering Committee

Community priorities
and concerns

Environmental racism
and history of redlining
in Los Angeles (to
define social justice
component)

Characteristics of
scientifically sound
studies

Strengths and
limitations of the prior
Assessment

Pros, cons, strengths
and challenges of
different types of
studies

Important health
outcomes to study

Data sources and their
availability, strengths
and limitations

Recommendations of
the experts

Expert Recommendations

1. Estimate exposure based on residential distance from the oil field.

2. Consider household survey with easily collected and non-invasive biological measure, e.g., lung function or blood pressure.

- Not advisable to use blood or urine: difficult to interpret, expensive, invasive

3. Consider eliminating cancer incidence and mortality rates due to methodological limitations.

- Cases are not available at household level (zip code or census tract only)
- Study of a small geographic group may not contain sufficient relevant cancer cases to study
- Study birth outcomes due to the advantages of birth data: can get the data at household level; shorter latency time to find effects

Committee Recommendations for this Assessment

1

Conduct a household survey with a biological measure to study shorter-term, self-reported outcomes; look for differences in outcomes by residential distance from the oil field.

2

Study differences in birth outcomes by residential distance from the oil field.

3

Forego cancer incidence and mortality data analysis due to current methodological limitations.



Benefits of Studying Birth Outcomes, Survey and Biometric Measure

- Benefits of studying birth outcomes
 - Possible to get household-level data
 - Some recent studies have found effects on birth outcomes among those living closer to oil and gas facilities
 - Short latency time from exposure to health outcome
- Benefit of surveys/biometric measure(s)
 - Household-level data
 - Flexibility in questions that can be included (race, income, education, length of time at residence, short-term health symptoms, smoking, physical activity, etc.)
 - Biometric measure adds strength to any findings

The Work Order Solicitation: Requirements for the Health Assessment



Establish and convene a Community Advisory Board (CAB)



Estimate exposure based on residential distance from oil wells, meteorological data, and other relevant data as available



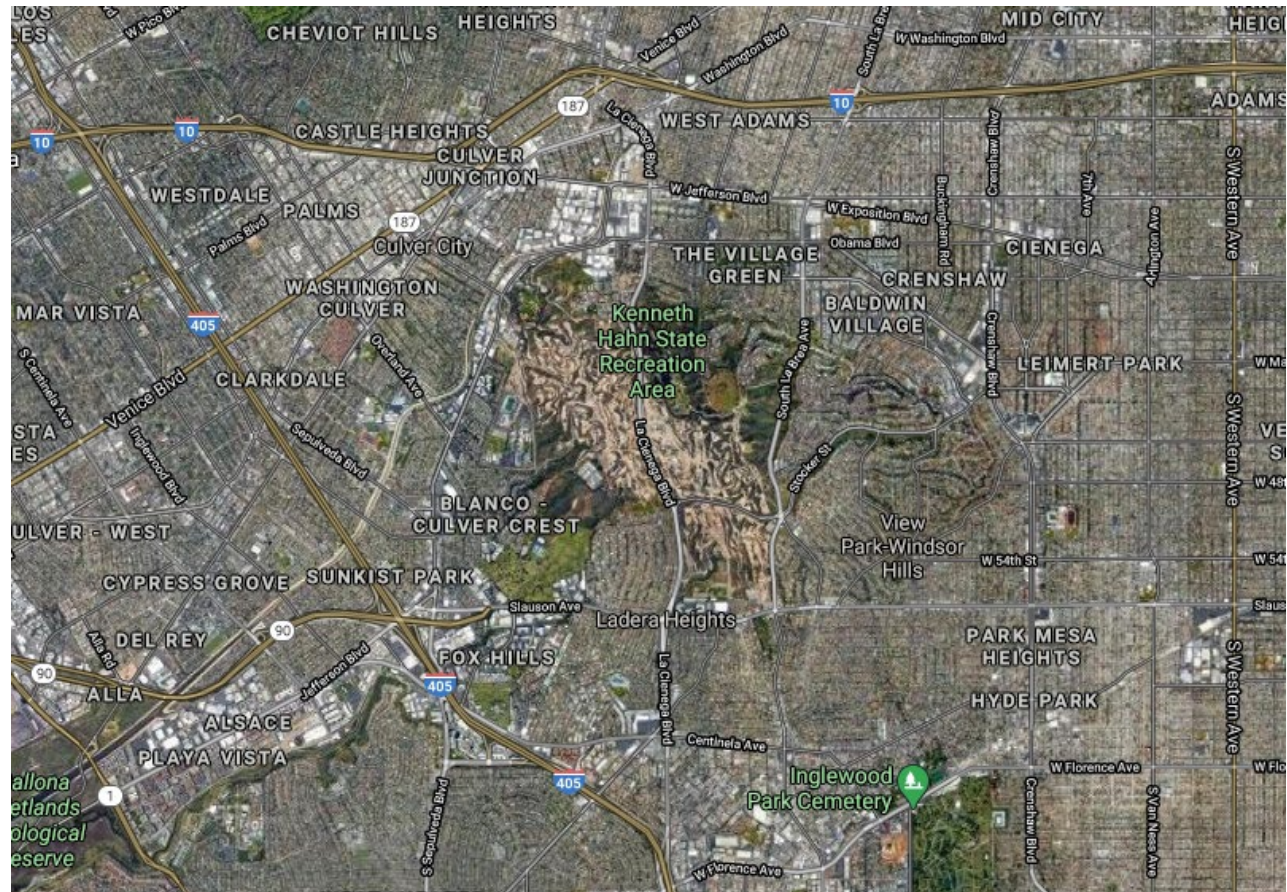
Analyze birth outcomes within a 2-mile radius of the Inglewood Oil Field by estimated exposure



Conduct a household survey including biometric measure(s) and analyze collected data by estimated exposure

Intersection with CARB Study of Neighborhood Air near Petroleum Sources (SNAPS)

- Mobile monitoring to characterize air quality in different neighborhoods
- Understanding of air emissions in the area generally
- Caveat: will need to work with CARB SNAPS timing



Next Steps

Application Process

- Bids due March 31, 2021
- Month of April, 2021
 - Review by Contracts & Grants
 - Review by subject matter experts
 - Selection of contractor
 - Negotiation of contract
- Proposed start date May 3, 2021

Assessment Implementation

Contractor will:

- Work with CAP to assemble advisory group
- Obtain birth data
- Draft protocols and study materials for Public Health and CAB review
- Submit Institutional Review Board applications



COMMENTS / QUESTIONS





The Steering Committee and DPH sincerely thank Sonya Vasquez and Community Health Councils, the CAP, and the Health Working Group for their support of this work.

Links to Summary Report and Other Health Assessment Documents

Baldwin Hills Steering Committee Planning and Facilitation Summary Report

https://planning.lacounty.gov/assets/upl/project/bh_steering-committee-planning-facilitation-summary-report.pdf

Documents Folder for the Baldwin Hills Health Assessment and Environmental Justice Study

https://planning.lacounty.gov/baldwinhills/study_2020