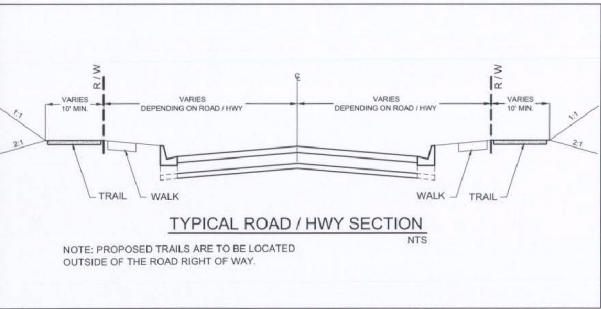


Los Angeles County General Plan  
SANTA CLARITA VALLEY  
AREA PLAN  
Trails Map

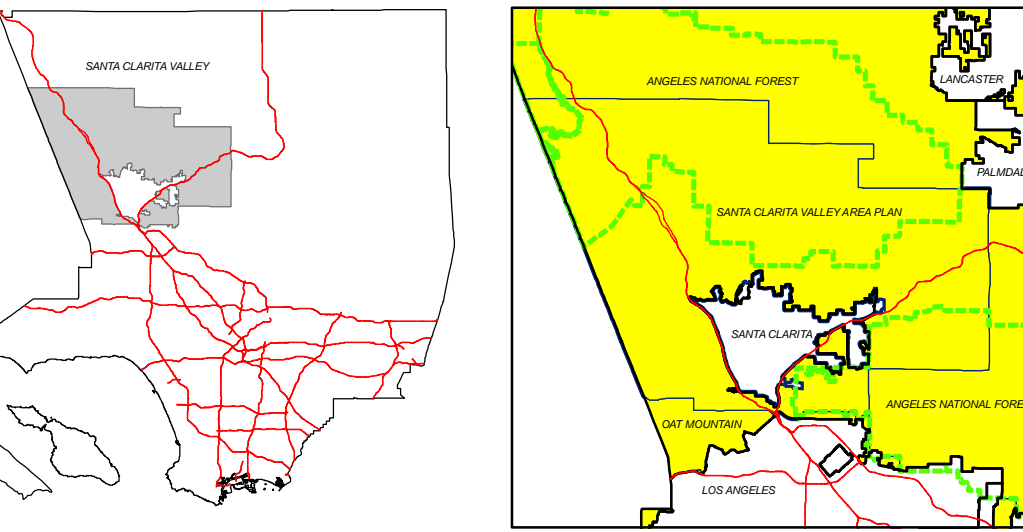
Adopted by the Board of Supervisors: January 16, 2007  
As Amended Through: 1/16/07 RPA-200600001-(5)

- Legend**
- Adopted County Trail System
  - Federal/National Forest Trails
  - Pacific Crest Trail
  - Incorporated City Trails
  - Freeways
  - 2004 Parcels
  - Adopted Significant Ecological Areas
  - National Forest Boundary
  - Castaic Lake Recreation Area
  - Parks
  - Lakes
  - Santa Clarita Valley Area Plan Planning Area

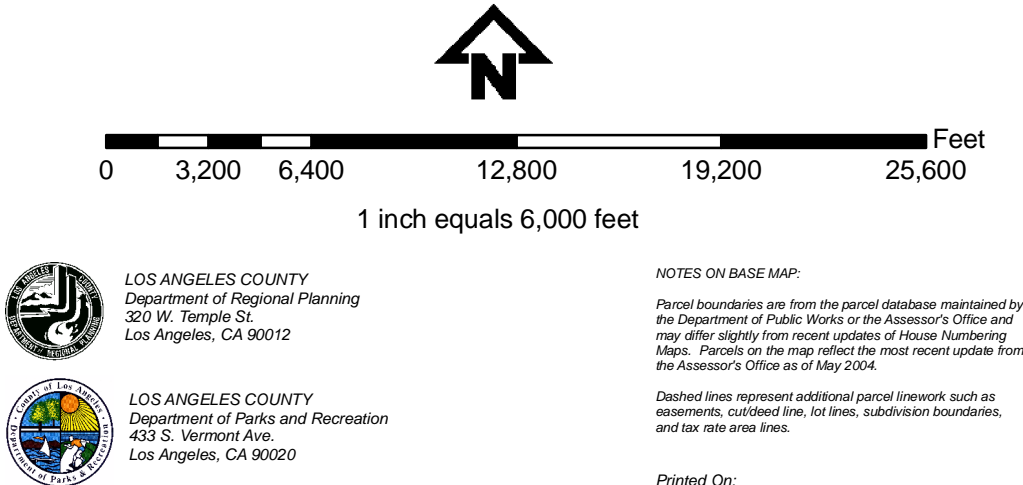
Note: This is an updated trails map for the Santa Clarita Valley Area Plan and replaces the previous trails map adopted by the Board of Supervisors with the 1996 update of the Santa Clarita Valley Area Plan. It has been updated at the initiative of the Los Angeles County Department of Parks and Recreation with participation of the Santa Clarita Valley Trails Advisory Committee, a group that consisted of area property owners and representatives of state and federal agencies involved in trails planning and maintenance. Though the new map has been prepared using advanced and accurate computerized Geographic Information Systems (GIS) mapping techniques, the trail alignments are not intended to be precise. Rather, the best and most feasible route is to be determined as a result of further study, as these properties are developed and the trail and trail connectivity needs of these developments become clear. In addition to the Parks and Recreation Department, data for this map has been provided by the City of Los Angeles, the City of Santa Clarita, the City of Palmdale, and the City of Lancaster. Data for the Pacific Crest Trail was provided by the Pacific Crest Trail Association.



KEY MAP: VICINITY MAP:



Note: Colors denote incorporated cities and unincorporated areas and are based on classifications. Green Dashed Line is the National Forest Boundary.

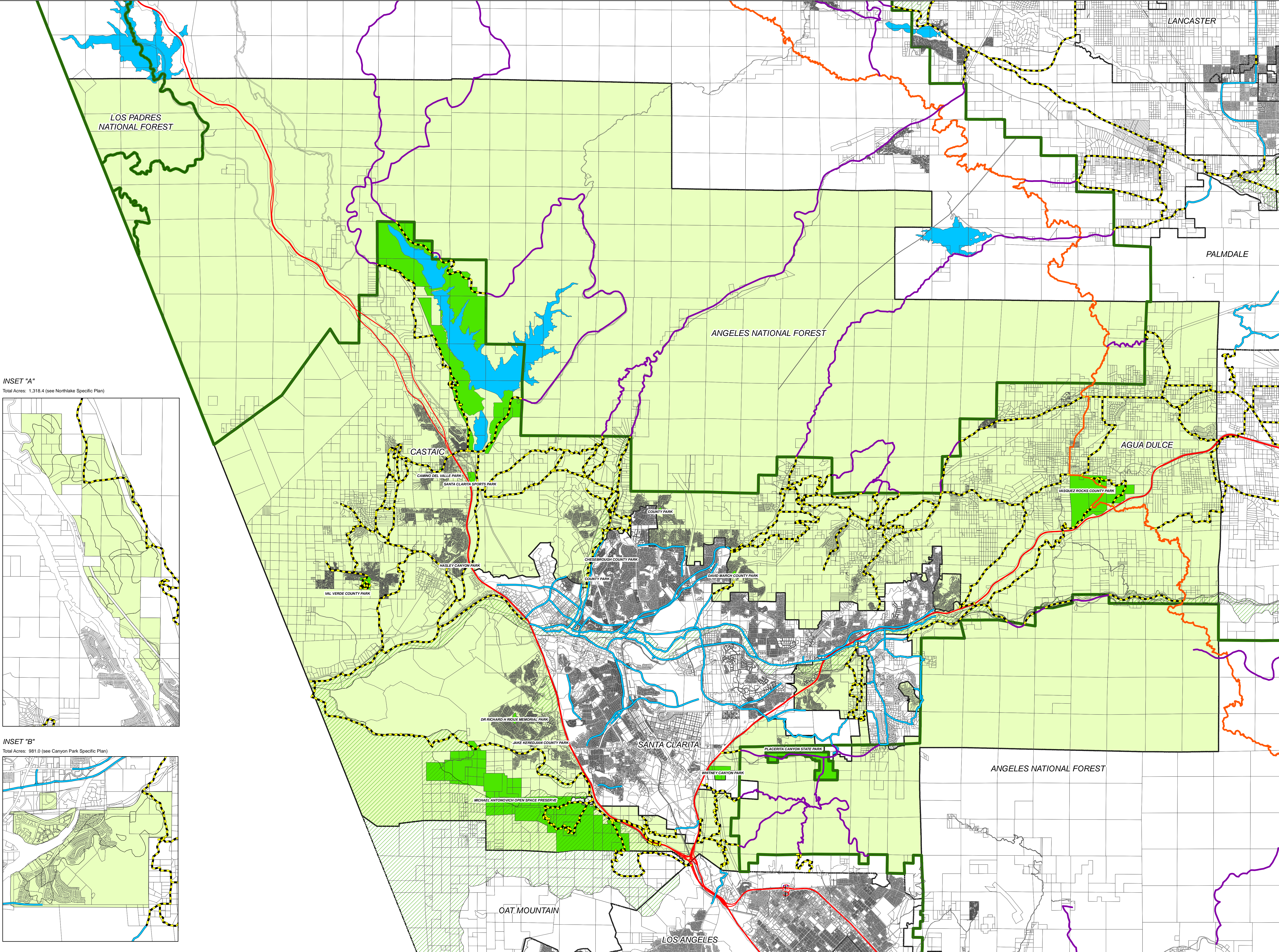


LOS ANGELES COUNTY  
Department of Regional Planning  
300 W. Temple St.  
Los Angeles, CA 90012

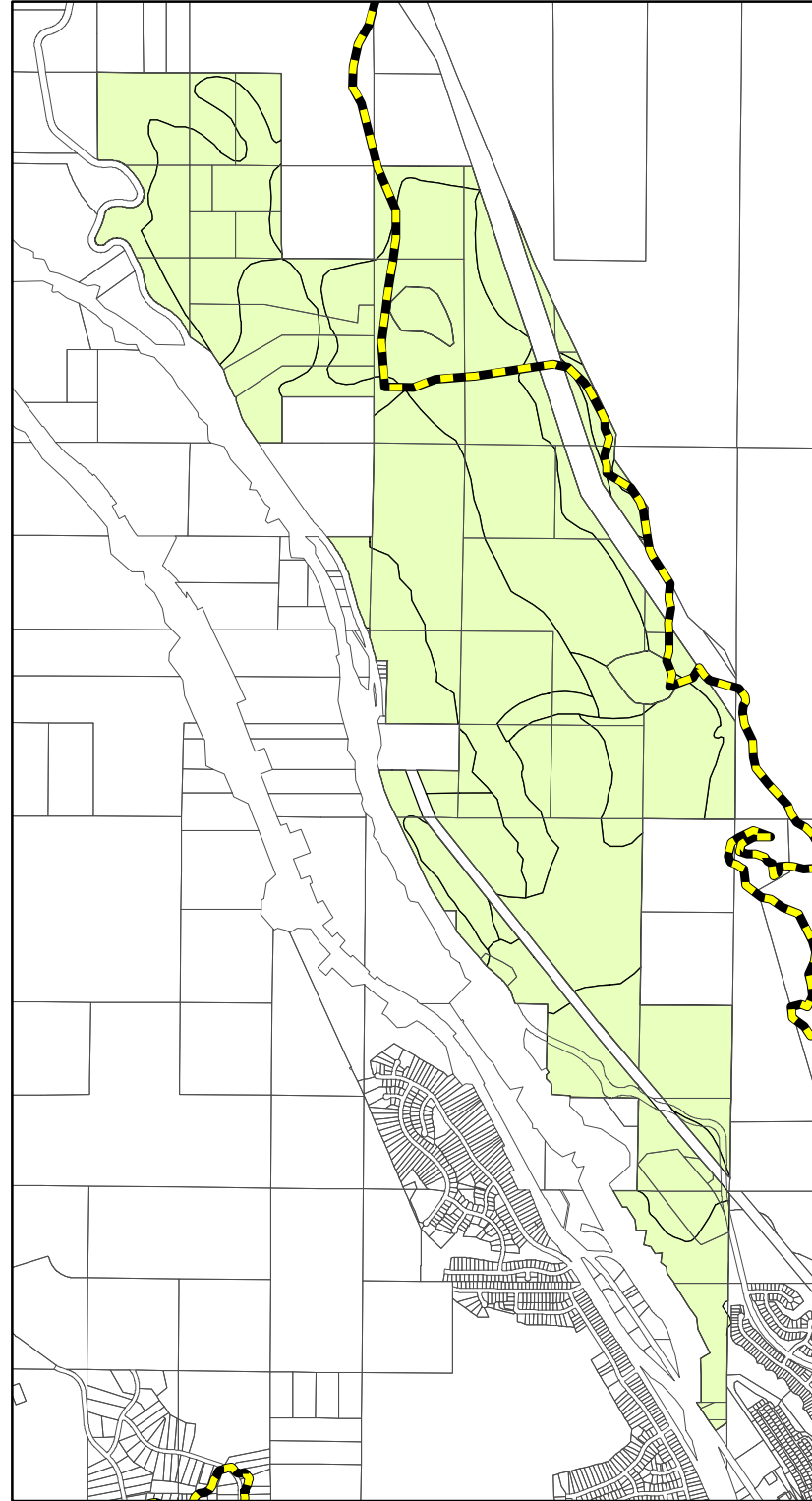
LOS ANGELES COUNTY  
Department of Parks and Recreation  
433 S. Vermont Ave.  
Los Angeles, CA 90020

NOTES ON BASE MAP:  
Parcel boundaries are from the parcel database maintained by the Department of Public Works or the Assessor's Office and may differ slightly from recent updates of House Numbering Maps. Parcels on the map reflect the most recent update from the Assessor's Office as of May 2004.  
Dashed lines represent additional parcel network such as easements, railroad lines, lot lines, subdivision boundaries, and raw site area lines.

Printed On: \_\_\_\_\_



INSET "A"  
Total Acres: 1,318.4 (see Northlake Specific Plan)



INSET "B"  
Total Acres: 981.0 (see Canyon Park Specific Plan)

