

**LOS ANGELES COUNTY**  
**MAP 3:**  
**SCENIC RESOURCES (EAST)**  
**SANTA MONICA MOUNTAINS**  
**LOCAL COASTAL PROGRAM**


**LEGEND**


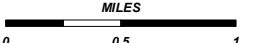
-  PUBLIC VIEWING AREA
-  STREAMS AND WETLANDS (FROM NATIONAL WETLANDS INVENTORY)
-  100-FT ELEVATION CONTOUR
-  SIGNIFICANT RIDGELINE (ADOPTED)
-  SIGNIFICANT RIDGELINE (PROPOSED)
-  STATE-DESIGNATED COUNTY SCENIC HIGHWAY
-  SCENIC ROUTE
-  MAJOR ROAD
-  HIGHWAY
-  SCENIC ELEMENT
-  SANTA MONICA MOUNTAINS COASTAL ZONE BOUNDARY \*
-  OTHER UNINCORPORATED COMMUNITY
-  INCORPORATED CITY

\* The Coastal Zone Boundary depicted on this map is shown for illustrative purposes only and does not define the Coastal Zone. The delineation is representational, may be revised at any time in the future, is not binding on the Coastal Commission, and may not eliminate the need for a formal boundary determination made by the Coastal Commission.

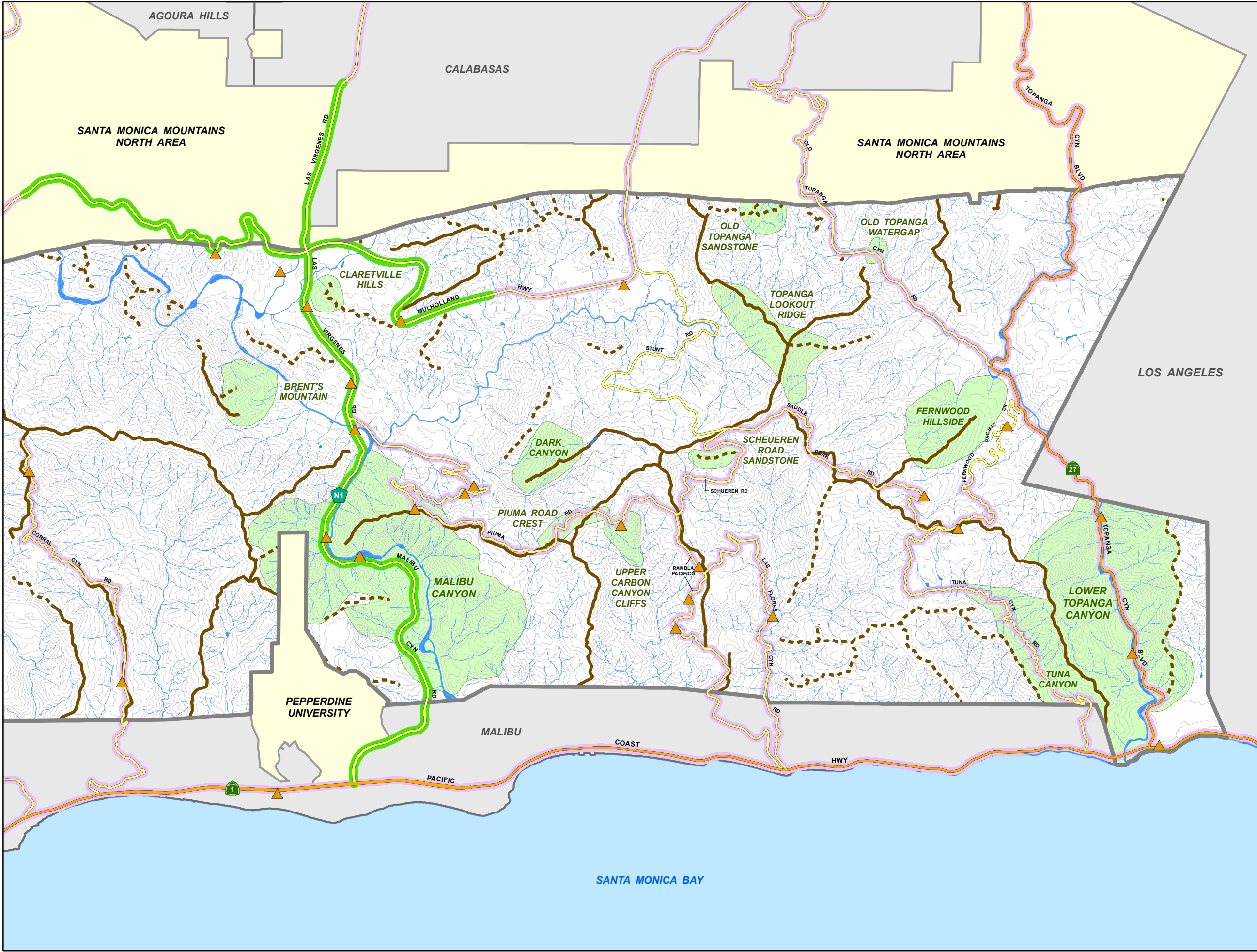
**VICINITY MAP:**




 LOS ANGELES COUNTY  
 DEPT. OF REGIONAL PLANNING  
 320 W. TEMPLE ST.  
 LOS ANGELES, CA 90012



 MILES  
 PRINTED ON: \_\_\_\_\_






PREPARED BY DRP GIS SECTION / REVISED MAY 2016





LOS ANGELES COUNTY  
**MAP 3:  
 SCENIC RESOURCES (WEST)**  
 SANTA MONICA MOUNTAINS  
 LOCAL COASTAL PROGRAM

**LEGEND**

-  PUBLIC VIEWING AREA
-  STREAMS AND WETLANDS (FROM NATIONAL WETLANDS INVENTORY)
-  100-FT ELEVATION CONTOUR
-  SIGNIFICANT RIDGELINE (ADOPTED)
-  SIGNIFICANT RIDGELINE (PROPOSED)
-  STATE-DESIGNATED COUNTY SCENIC HIGHWAY
-  SCENIC ROUTE
-  MAJOR ROAD
-  HIGHWAY
-  SCENIC ELEMENT
-  SANTA MONICA MOUNTAINS COASTAL ZONE BOUNDARY\*
-  OTHER UNINCORPORATED COMMUNITY
-  INCORPORATED CITY

\* The Coastal Zone Boundary depicted on this map is shown for illustrative purposes only and does not define the Coastal Zone. The delineation is representational, may be revised at any time in the future, is not binding on the Coastal Commission, and may not eliminate the need for a formal boundary determination made by the Coastal Commission.

**VICINITY MAP**



LOS ANGELES COUNTY  
 DEPT. OF REGIONAL PLANNING  
 320 W. TEMPLE ST.  
 LOS ANGELES, CA 90012



PREPARED BY DRP GIS SECTION / REVISED MAY 2016

