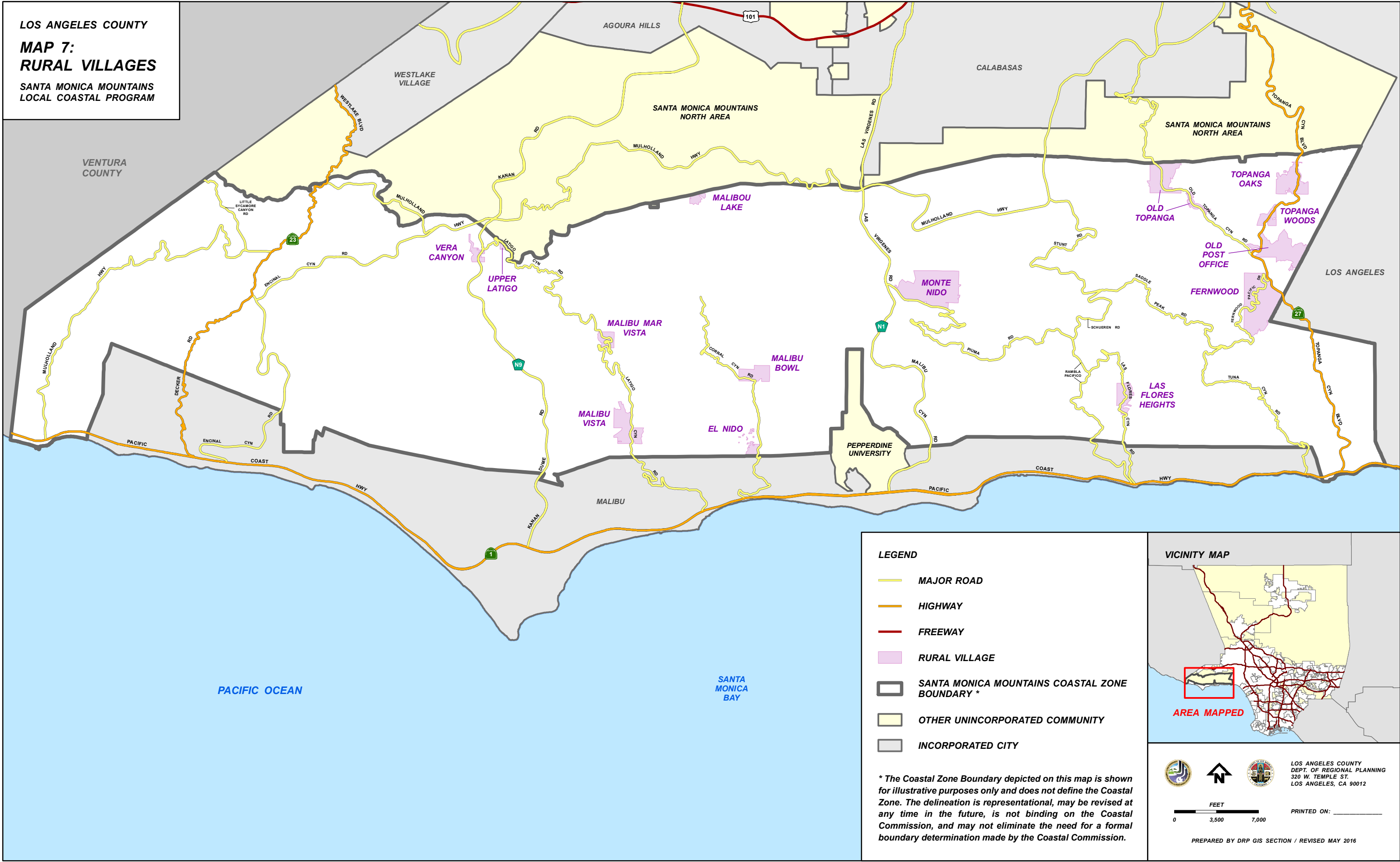
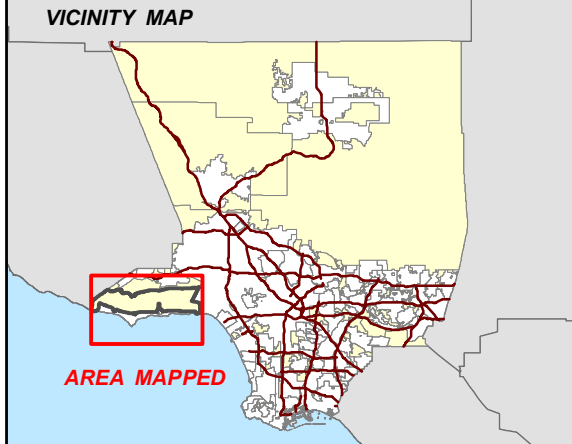


LOS ANGELES COUNTY
MAP 7:
RURAL VILLAGES
 SANTA MONICA MOUNTAINS
 LOCAL COASTAL PROGRAM



LEGEND

- MAJOR ROAD
- HIGHWAY
- FREEWAY
- RURAL VILLAGE
- SANTA MONICA MOUNTAINS COASTAL ZONE BOUNDARY *
- OTHER UNINCORPORATED COMMUNITY
- INCORPORATED CITY



* The Coastal Zone Boundary depicted on this map is shown for illustrative purposes only and does not define the Coastal Zone. The delineation is representational, may be revised at any time in the future, is not binding on the Coastal Commission, and may not eliminate the need for a formal boundary determination made by the Coastal Commission.

LOS ANGELES COUNTY
 DEPT. OF REGIONAL PLANNING
 320 W. TEMPLE ST.
 LOS ANGELES, CA 90012

FEET
 0 3,500 7,000

PRINTED ON: _____
 PREPARED BY DRP GIS SECTION / REVISED MAY 2016