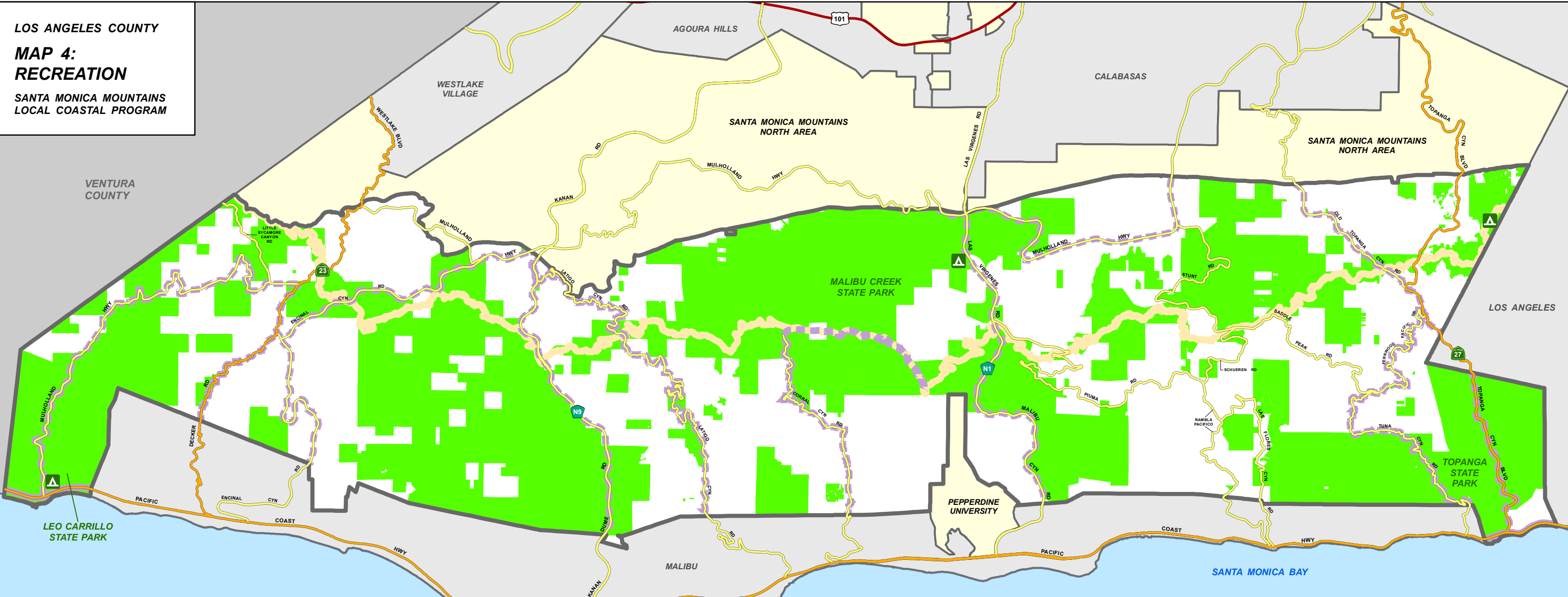


**LOS ANGELES COUNTY**  
**MAP 4:**  
**RECREATION**  
**SANTA MONICA MOUNTAINS**  
**LOCAL COASTAL PROGRAM**



**LEGEND**

- PUBLIC CAMPGROUND
- MAJOR ROAD
- HIGHWAY
- FREEWAY
- TRAIL (2012 NATIONAL PARK SERVICE TRAIL INVENTORY)
- BACKBONE TRAIL
- PARKLAND AND OPEN SPACE
- SANTA MONICA MOUNTAINS COASTAL ZONE BOUNDARY \*\*
- OTHER UNINCORPORATED COMMUNITY
- INCORPORATED CITY

**LOS ANGELES COUNTY BICYCLE MASTER PLAN (ADOPTED 2012) \***

- CLASS III BIKE ROUTE - EXISTING
- CLASS III BIKE ROUTE - PROPOSED

\* Only Class III Bike Routes are planned for the Coastal Zone in the Bicycle Master Plan.

\*\* The Coastal Zone Boundary depicted on this map is shown for illustrative purposes only and does not define the Coastal Zone. The delineation is representational, may be revised at any time in the future, is not binding on the Coastal Commission, and may not eliminate the need for a formal boundary determination made by the Coastal Commission.

**VICINITY MAP**



LOS ANGELES COUNTY  
 DEPT. OF REGIONAL PLANNING  
 320 W. TEMPLE ST.  
 LOS ANGELES, CA 90012

FEET  
 0 3,500 7,000

PRINTED ON: \_\_\_\_\_  
 PREPARED BY DRP GIS SECTION / REVISED MAY 2016