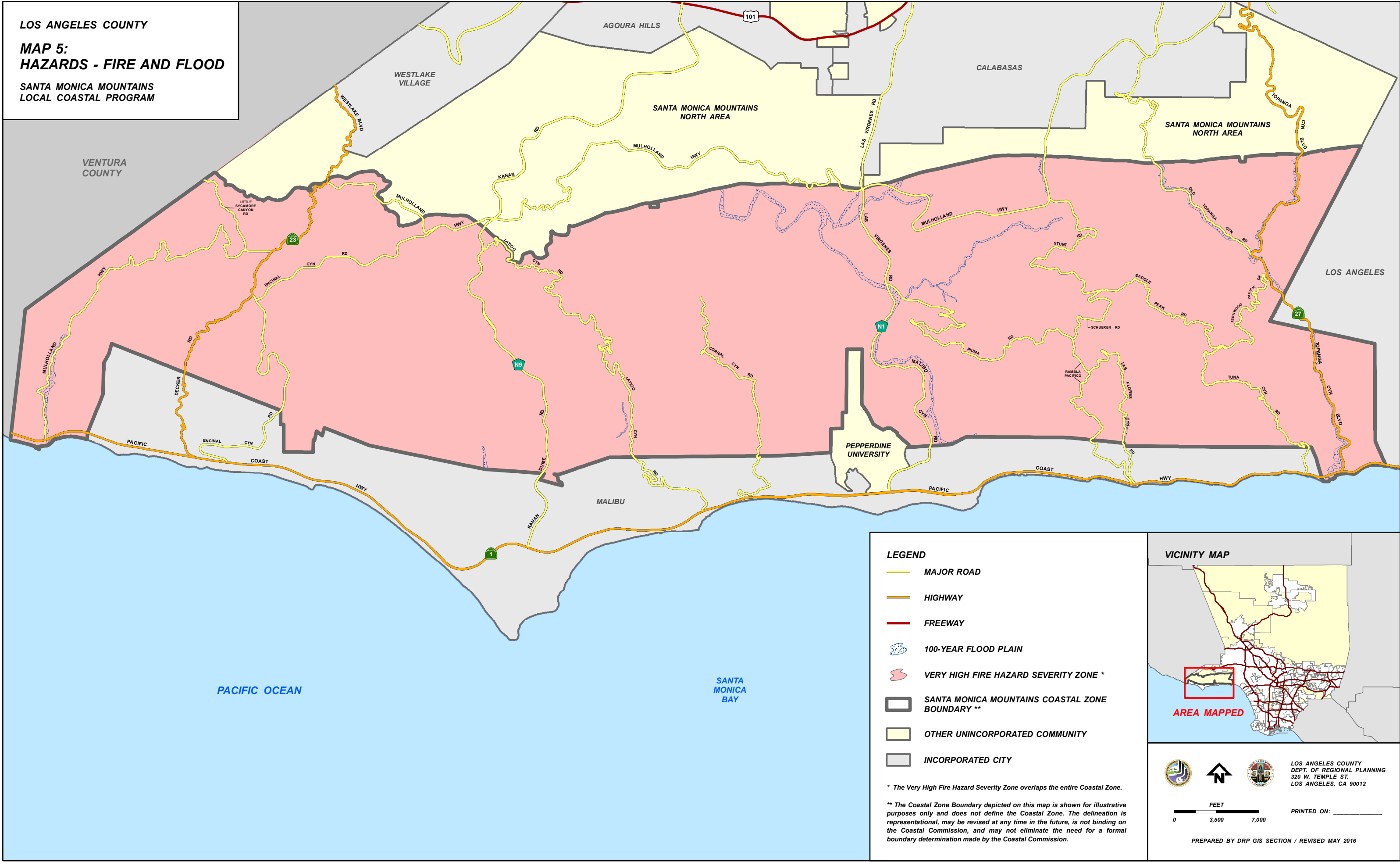


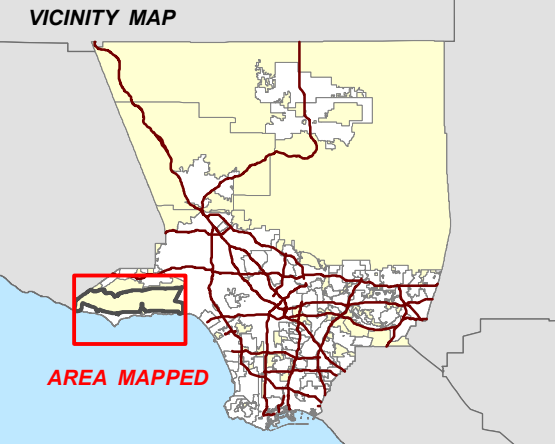
LOS ANGELES COUNTY
MAP 5:
HAZARDS - FIRE AND FLOOD
SANTA MONICA MOUNTAINS
LOCAL COASTAL PROGRAM



- LEGEND**
- MAJOR ROAD
 - HIGHWAY
 - FREEWAY
 - 100-YEAR FLOOD PLAIN
 - VERY HIGH FIRE HAZARD SEVERITY ZONE *
 - SANTA MONICA MOUNTAINS COASTAL ZONE BOUNDARY **
 - OTHER UNINCORPORATED COMMUNITY
 - INCORPORATED CITY

* The Very High Fire Hazard Severity Zone overlaps the entire Coastal Zone.

** The Coastal Zone Boundary depicted on this map is shown for illustrative purposes only and does not define the Coastal Zone. The delineation is representational, may be revised at any time in the future, is not binding on the Coastal Commission, and may not eliminate the need for a formal boundary determination made by the Coastal Commission.



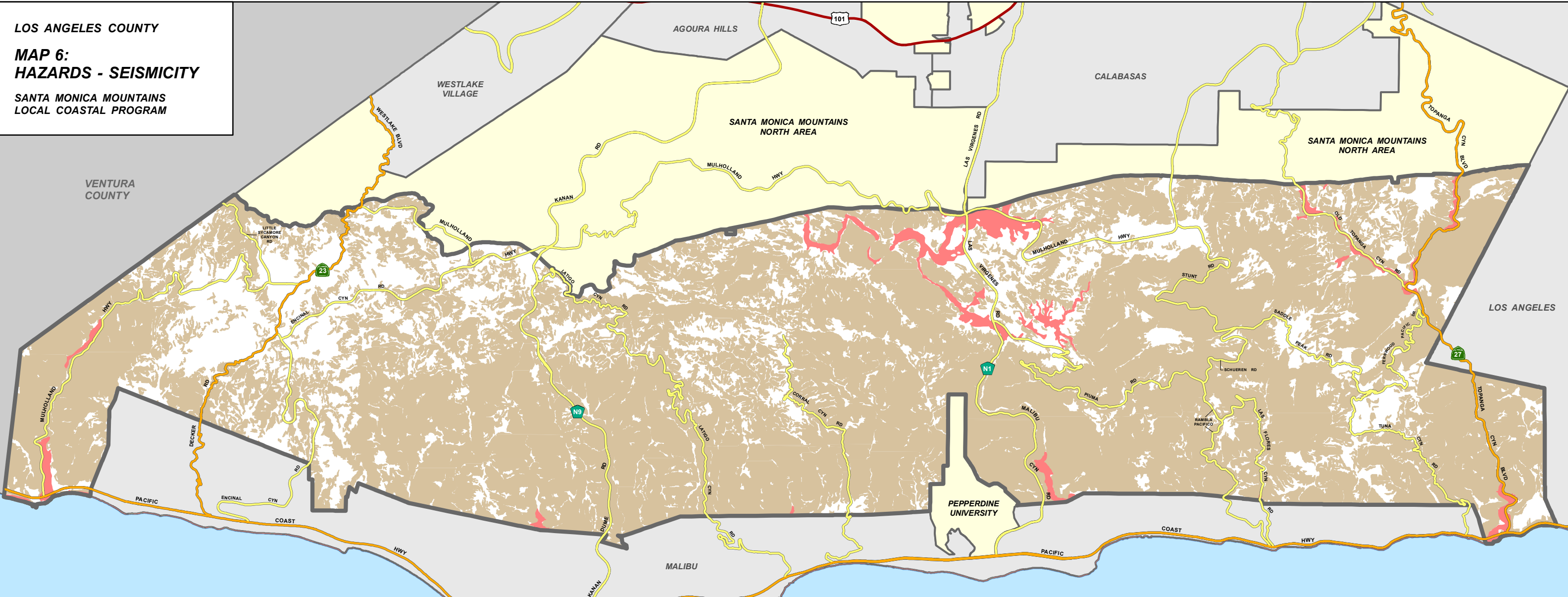
LOS ANGELES COUNTY
 DEPT. OF REGIONAL PLANNING
 320 W. TEMPLE ST.
 LOS ANGELES, CA 90012

PRINTED ON: _____

FEET
 0 3,500 7,000

PREPARED BY DRP GIS SECTION / REVISED MAY 2016

LOS ANGELES COUNTY
MAP 6:
HAZARDS - SEISMICITY
SANTA MONICA MOUNTAINS
LOCAL COASTAL PROGRAM



LEGEND

- MAJOR ROAD
- HIGHWAY
- FREEWAY
- AREAS OF EARTHQUAKE-INDUCED LIQUEFACTION POTENTIAL *
- AREAS OF EARTHQUAKE-INDUCED LANDSLIDE POTENTIAL *
- SANTA MONICA MOUNTAINS COASTAL ZONE BOUNDARY **
- OTHER UNINCORPORATED COMMUNITY
- INCORPORATED CITY

* There are no Alquist-Priolo Earthquake Fault Zones within the Santa Monica Mountains Coastal Zone.

** The Coastal Zone Boundary depicted on this map is shown for illustrative purposes only and does not define the Coastal Zone. The delineation is representational, may be revised at any time in the future, is not binding on the Coastal Commission, and may not eliminate the need for a formal boundary determination made by the Coastal Commission.



LOS ANGELES COUNTY
 DEPT. OF REGIONAL PLANNING
 320 W. TEMPLE ST.
 LOS ANGELES, CA 90012

PRINTED ON: _____

FEET
 0 3,500 7,000

PREPARED BY DRP GIS SECTION / REVISED MAY 2016