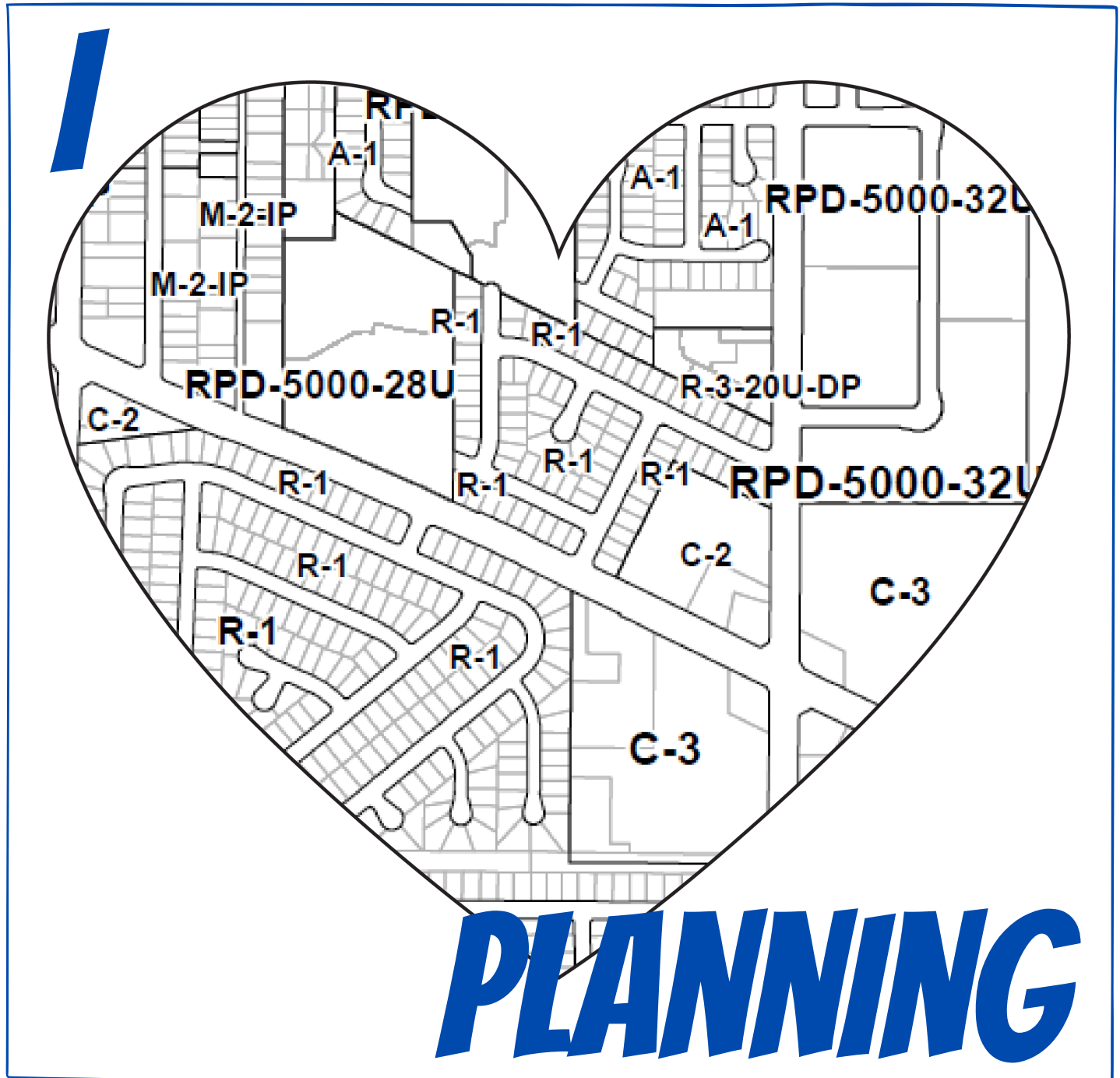


# FUTURE PLANNERS



## ACTIVITY BOOK



Los Angeles County Department of Regional Planning  
FUTURE PLANNERS ACTIVITY BOOK  
Volume 1, Issue 1 – December 2020

[www.planning.lacounty.gov](http://www.planning.lacounty.gov)



# TABLE OF CONTENTS

<u>ACTIVITY</u>	<u>PAGE</u>
COUNTY MAP COLORING PAGE .....	1
WORD SEARCH 1 .....	2
DEFINITION MATCHING ACTIVITY .....	3
WHERE DO THEY BELONG? MATCHING ACTIVITY .....	4
WORD SEARCH 2 .....	5
WORD SEARCH 3 .....	6
MISSING LETTERS PUZZLE .....	7
CAP COLORING PAGE .....	8
SEA COLORING PAGE .....	9
CRYPTOGRAM PUZZLE .....	10
PLANNING WORDS GLOSSARY .....	11-14
PUZZLE ANSWERS .....	15-16

The cover page is part of the zoning map for the community of West Carson. Color it with the following colors to complete the zoning map:

A (agricultural land) = Green

C (commercial land) = Red

R (residential land) = Yellow

M (industrial land ) = Blue



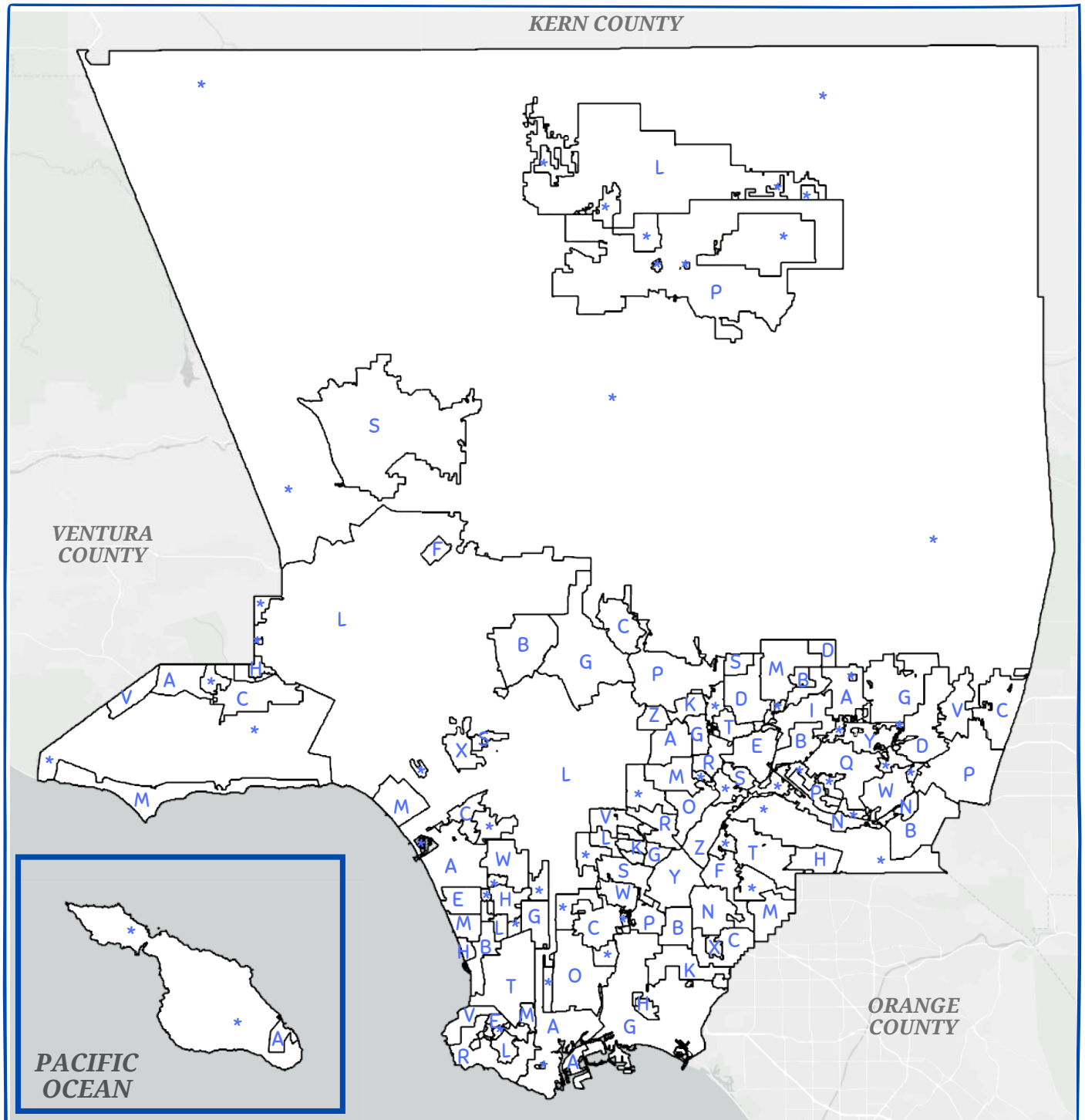
Los Angeles County Department of Regional Planning  
**FUTURE PLANNERS ACTIVITY BOOK**

Learn more at [www.planning.lacounty.gov](http://www.planning.lacounty.gov)

# Unincorporated LA County

Los Angeles County is made up of 88 incorporated cities and over 100 unincorporated communities.

Color all the STARRED (\*) areas YELLOW to see the UNINCORPORATED areas.  
Color all the LETTERED areas different COLORS to see the different CITIES.



# Word Search 1

Find the following planning words in the puzzle.  
Words are hidden forward, up & down.

AGRICULTURAL

COMMERCIAL

COMMUNITY

COUNTY

DENSITY

DESERT

HOUSING

INDUSTRIAL

JURISDICTION

MAPS

MOUNTAINS

ORDINANCE

PLANNING

RESIDENTIAL

RURAL

UNINCORPORATED

URBAN

VALLEY

ZONING

D	K	I	I	N	D	U	S	T	R	I	A	L	U	A	U	X	R
E	U	U	Q	C	B	C	O	M	M	E	R	C	I	A	L	T	U
S	Z	R	U	N	I	N	C	O	R	P	O	R	A	T	E	D	R
E	C	B	E	B	X	K	E	U	K	Z	O	N	I	N	G	H	A
R	S	A	A	P	L	A	N	N	I	N	G	M	Q	W	P	X	L
T	R	N	V	Q	A	G	R	I	C	U	L	T	U	R	A	L	C
M	O	U	N	T	A	I	N	S	K	H	O	U	S	I	N	G	O
P	D	H	D	E	N	S	I	T	Y	V	A	L	L	E	Y	D	U
L	O	O	R	D	I	N	A	N	C	E	Q	B	X	X	T	P	N
V	Q	K	Z	R	E	S	I	D	E	N	T	I	A	L	P	A	T
G	U	W	F	M	A	P	S	C	O	M	M	U	N	I	T	Y	Y
A	N	N	Z	J	U	R	I	S	D	I	C	T	I	O	N	E	O



# Definition Matching

Match the Planning Words to their Definitions.  
Use the Planning Words Glossary if you need help.

LAND USE

Rules for what can be built where

CODE

A law or rule that's approved by the Government.

ZONING

Rules for meeting the minimum requirements to build on a lot.

GENERAL  
PLAN

Deciding and guiding how a community should be developed including where to place residences, services, and amenities.

STANDARDS

A guide for future development.

PLANNING

A collection of regulations, or rules.

ORDINANCE

A collection of policy statements for decision-makers to consider regarding how a city or county should grow.



# Where do they Belong?

Sort the words into the correct category. Write them inside the boxes. Some can go in more than one category.

warehouse      farm      office      restaurant      church  
apartment      livestock      market      gas station      mall  
school      house      greenhouse      theater  
park      crops      airport      store

residential

commercial

agricultural

industrial



# Word Search 2

Find the following West Service Area communities in the puzzle.  
Words are hidden forward, up & down.

ALONDRA PARK	LADERA HEIGHTS	WALNUT PARK
DEL AIRE	LENNOX	WEST ATHENS
FLORENCE FIRESTONE	MALIBOU LAKE	WESTHILLS
LA RAMBLA	MARINA DEL REY	WILLOWBROOK
	RANCHO DOMINGUEZ	

D	H	G	P	C	W	E	S	T	A	T	H	E	N	S	H	P	E
Q	O	O	A	D	L	E	N	N	O	X	E	J	M	J	X	L	W
S	T	Y	W	E	S	T	H	I	L	L	S	E	W	I	Y	G	A
L	T	U	M	A	R	I	N	A	D	E	L	R	E	Y	Q	J	L
S	D	R	A	N	C	H	O	D	O	M	I	N	G	U	E	Z	N
L	A	D	E	R	A	H	E	I	G	H	T	S	P	V	U	A	U
L	E	N	D	E	L	A	I	R	E	F	G	N	V	M	F	I	T
F	L	O	R	E	N	C	E	F	I	R	E	S	T	O	N	E	P
N	E	A	P	O	M	A	L	I	B	O	U	L	A	K	E	F	A
U	H	A	L	O	N	D	R	A	P	A	R	K	W	J	W	W	R
Y	I	O	L	A	R	A	M	B	L	A	M	Q	I	J	U	R	K
W	I	L	L	O	W	B	R	O	O	K	Y	X	C	L	E	V	E





# Word Search 3

Find the following San Gabriel Valley communities in the puzzle.  
Words are hidden forward, backward, up & down.

ALTADENA	LA CRESCENTA	SOUTH SAN JOSE HILLS
AVOCADO HEIGHTS	LOS NIETOS	VALINDA
CHARTER OAK	MONTROSE	VINCENT
CITRUS	MAYFLOWER VILLAGE	WALNUT ISLANDS
COVINA ISLANDS	ROWLAND HEIGHTS	WEST PUENTE VALLEY
HACIENDA HEIGHTS	SAN PASQUAL	WEST SAN DIMAS
KINNELOA MESA	SOUTH DIAMOND BAR	WHITTIER NARROWS

S	O	U	T	H	S	A	N	J	O	S	E	H	I	L	L	S	O	S	Y	A	C	Q
D	X	R	S	S	D	N	A	L	S	I	T	U	N	L	A	W	S	O	F	V	A	E
K	Q	X	E	G	A	L	L	I	V	R	E	W	O	L	F	Y	A	M	C	O	N	S
I	F	S	L	X	X	Y	I	L	L	O	S	N	I	E	T	O	S	J	O	C	T	T
N	L	U	S	T	H	G	I	E	H	A	D	N	E	I	C	A	H	H	V	A	Z	H
N	U	R	T	D	L	V	S	A	N	P	A	S	Q	U	A	L	F	U	I	D	A	G
E	I	T	H	R	A	B	D	N	O	M	A	I	D	H	T	U	O	S	N	O	T	I
L	Y	I	R	S	H	V	A	N	E	D	A	T	L	A	T	K	H	A	A	H	N	E
O	W	C	X	W	E	S	T	S	A	N	D	I	M	A	S	G	F	P	I	E	E	H
A	I	J	U	X	M	B	H	R	A	D	N	I	L	A	V	G	N	C	S	I	C	D
M	N	Z	I	D	N	A	J	C	H	A	R	T	E	R	O	A	K	W	L	G	S	N
E	U	G	Y	C	U	D	T	H	Q	D	M	C	E	U	J	J	M	L	A	H	E	A
S	Y	E	L	L	A	V	E	T	N	E	U	P	T	S	E	W	Q	V	N	T	R	L
A	Z	P	C	E	S	O	R	T	N	O	M	Z	G	P	S	D	O	R	D	S	C	W
F	M	H	F	W	H	I	T	T	I	E	R	N	A	R	R	O	W	S	S	N	A	O
C	I	M	O	I	A	N	C	X	R	M	D	W	T	N	E	C	N	I	V	Z	L	R





# Missing Letters

Use the community names below to fill in the missing letters and find out the area of LA County they are located in.

\_ \_ \_ R M \_ \_ T  
 \_ E E \_ \_ C \_  
 \_ \_ \_ O N  
 \_ \_ G \_ \_ N \_ S  
 \_ \_ K E \_ \_ \_ A N \_ \_ L \_ \_  
 \_ E A \_ \_ L \_ S S \_ \_  
 \_ \_ N \_ \_ R H \_ \_ \_ S  
 \_ A K \_ \_ \_ G H \_ S  
  
 L \_ \_ N \_ \_ A \_ \_ \_ \_  
 \_ \_ \_ R T \_ H \_ \_ L  
 \_ \_ \_ N \_  
 \_ \_ T \_ \_ \_ O C \_  
 \_ \_ \_ Z A \_ \_ \_ \_ L \_ \_ \_  
 \_ R \_ \_ \_ L \_ \_ R E

ACTON  
 BIG PINES  
 CRYSTAL LAIRE  
 DEL SUR  
 ELIZABETH LAKE  
 FAIRMONT

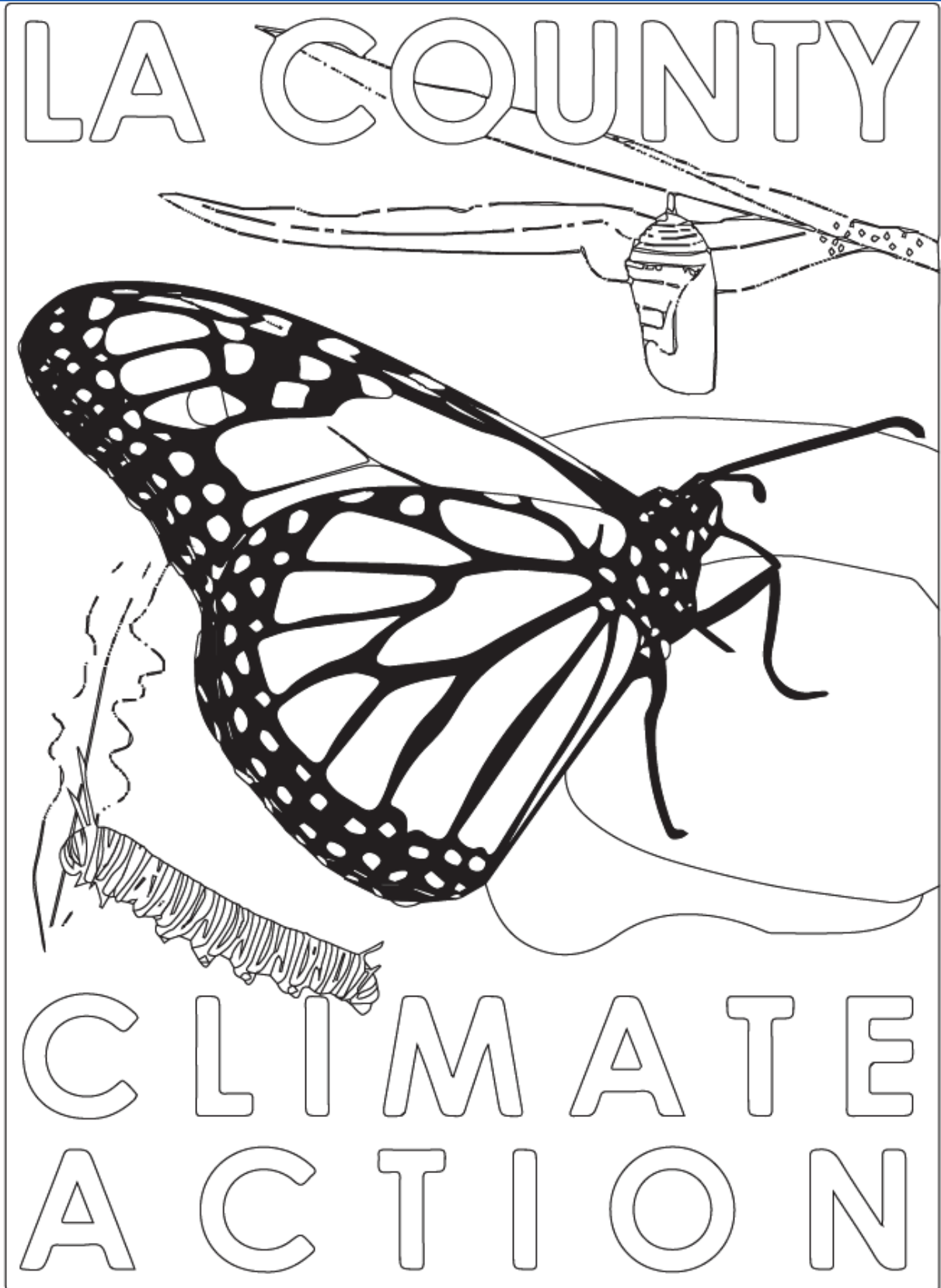
GORMAN  
 HI VISTA  
 JUNIPER HILLS  
 LAKE HUGHES  
 LAKE LOS ANGELES

LEONA VALLEY  
 LITTLE ROCK  
 LLANO  
 NEENACH  
 PARADISE  
 PEARBLOSSOM

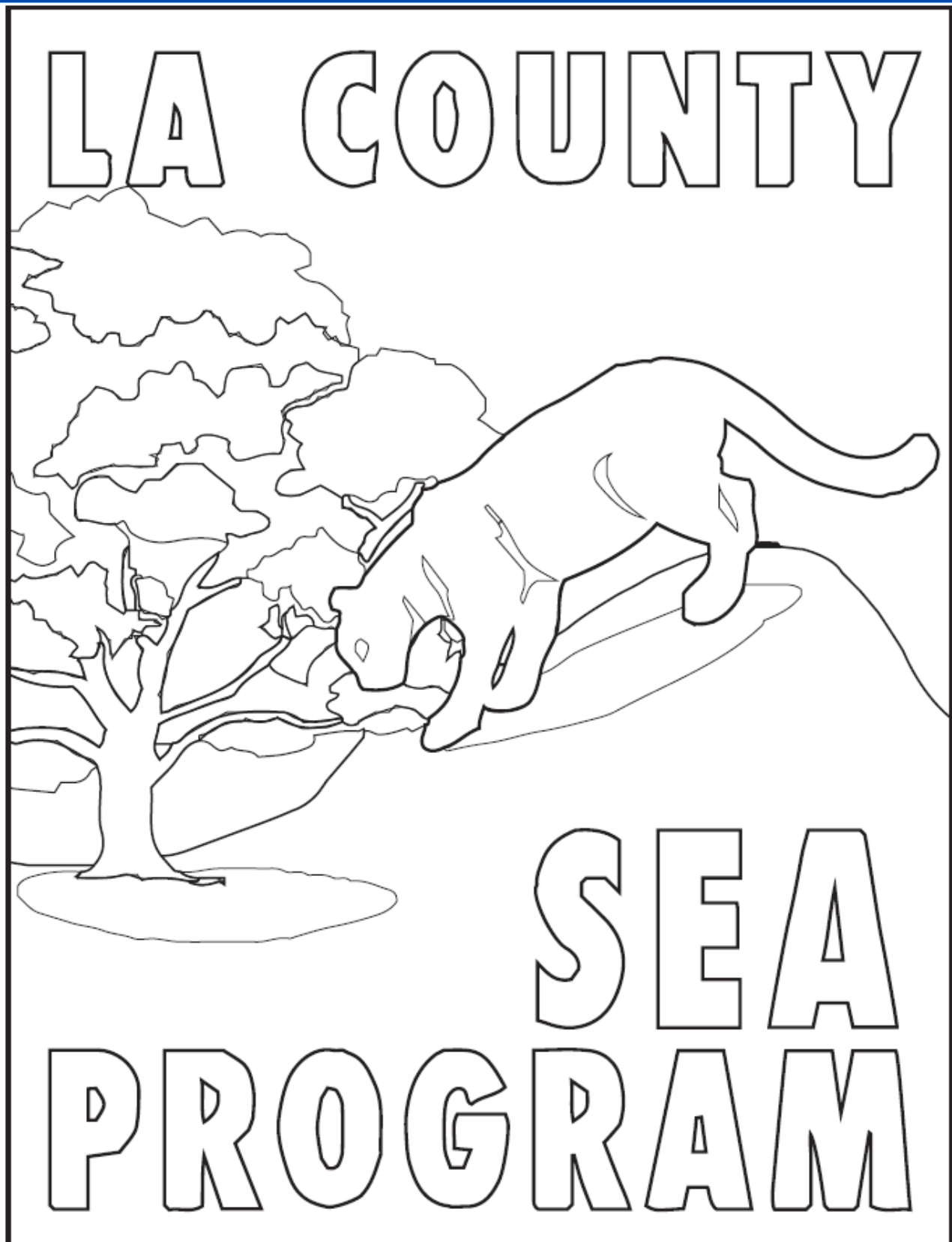
QUARTZ HILL  
 REDMAN  
 ROOSEVELT  
 VALYERMO  
 WRIGHTWOOD



# COLOR THE CLIMATE ACTION PLAN (CAP) LOGO!



# COLOR THE SIGNIFICANT ECOLOGICAL AREA (SEA) LOGO!



# Cryptogram Puzzle

Use the key below to discover the  
Department of Regional Planning's motto.

A	B	C	D	E	F	G	H	I	J	K	L	M
N	O	P	Q	R	S	T	U	V	W	X	Y	Z

\_ \_ \_ \_ \_

\_ \_ \_ \_ \_

\_ \_ \_ \_ \_



# Planning Words Glossary

Learn and use these words in the Activity Book puzzles.

<b>AGRICULTURAL</b>	Land that can be used to produce food, including as farming, growing crops, raising animals such as cows, horses, and chickens. Houses can also sometimes be built on agricultural land.
<b>AREA PLAN</b>	This lays out a vision and actions for how an area, made up of different communities grows and changes over time.
<b>CODE</b>	A collection of regulations, or rules.
<b>CLIMATE ACTION PLAN</b>	The County's plan to reduce the impacts of climate change by reducing greenhouse gas (GHG) emissions from community activities and development.
<b>COMMERCIAL</b>	Land that can be used for buildings that sell goods and services, such as stores, offices, medical clinics, hair salons, hotels and restaurants, as well as educational and institutional uses like schools and libraries.
<b>COMMUNITY</b>	A specific group of people living in a neighborhood, who share a common culture, values, and norms and who has developed relationships over a period of time.
<b>COMMUNITY PLAN</b>	This lays out a vision for how a community grows and changes over time and contains rules and strategies to make this change.



# Planning Words Glossary

Learn and use these words in the Activity Book puzzles.

## COMMUNITY STANDARDS DISTRICT

A Community Standards District (CSD) is an identified community boundary where specific rules apply on top of regular standards.

## COUNTY

A geographical area made up of unincorporated communities and incorporated cities. A county provides a variety of important health, welfare and social services to serve all residents countywide. It also provides decisions and services for planning, police, fire protection, parks, public works, water, waste removal, and libraries in unincorporated communities--services that an incorporated city may provide within its boundaries.

## DENSITY

The number of things, which could be people, animals, plants, or objects, in a certain area.

## GENERAL PLAN

A collection of policy statements for decision-makers to consider regarding how a city or county should grow.

## HOUSING

A house, apartment, townhome, condominium, mobile home or trailer, a building or group of rooms, or a single room where people can live.

## INDUSTRIAL

Land that can be used for warehouses and factories that make products. Uses can range from light industrial, such as research and development laboratories, to more intensive heavy industrial uses such as automobile dismantling and landfills.





# Planning Words Glossary

Learn and use these words in the Activity Book puzzles.

<b>JURISDICTION</b>	The official power to make legal decisions for a specific area.
<b>LAND USE</b>	A guide for future development.
<b>ORDINANCE</b>	A law or rule that is approved by the government, such as a city or county.
<b>PLANNING</b>	Deciding and guiding how a neighborhood should be built including where to place residences, services, and amenities.
<b>RESIDENTIAL</b>	Land used for building only dwelling units such as houses, apartments, condominiums & townhomes.
<b>RURAL</b>	Geographical areas with low population and not many buildings or housing.
<b>SIGNIFICANT ECOLOGICAL AREA</b>	A Significant Ecological Area (SEA) is an area of land within unincorporated Los Angeles County that has important biological resources (wildlife, plants, and insects) and allows a limited amount of development.
<b>STANDARDS</b>	The rules for meeting the minimum requirements to build on a lot.
<b>SUSTAINABILITY</b>	Everything that we need for our survival and well-being depends, either directly or indirectly, on our natural environment.
<b>UNINCORPORATED</b>	Geographical areas and communities that are not cities.



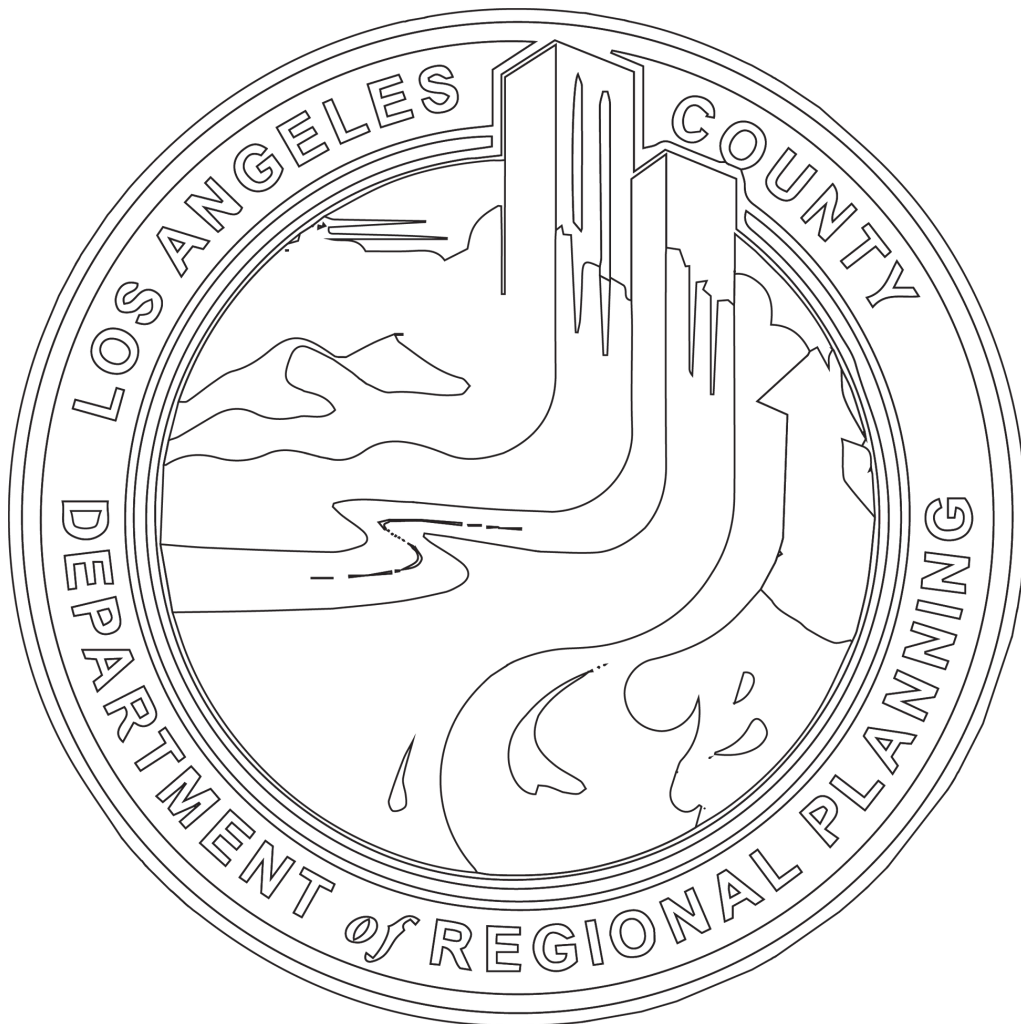


# Planning Words Glossary

Learn and use these words in the Activity Book puzzles.

**URBAN** Geographical areas that have moderate and higher density residential, commercial & industrial development, and the availability of public services.

**ZONING** The rules for what can be built where.



**COLOR THE DRP SEAL!**



**Los Angeles County Department of Regional Planning**  
**FUTURE PLANNERS ACTIVITY BOOK**

Learn more at [www.planning.lacounty.gov](http://www.planning.lacounty.gov)