

# Oil Well Ordinance for Unincorporated Los Angeles County

---

Regional Planning Commission

Agenda Item #9

April 15, 2020



OIL WELL ORDINANCE

COUNTY OF LOS ANGELES



# LA County Board of Supervisors

---

**Motion March 29, 2016**

1. Direct Regional Planning, Public Health, Fire Department, and Public Works to convene a “Strike Team” to study existing oil and gas facilities in unincorporated Los Angeles County.
2. Update Title 22 regulations for new and existing oil and gas facilities.



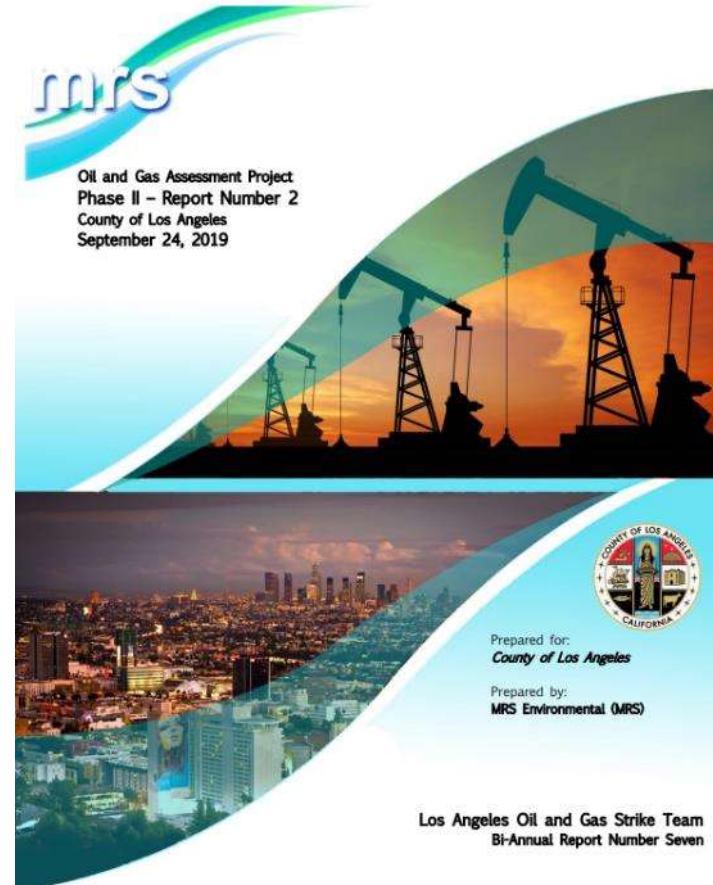
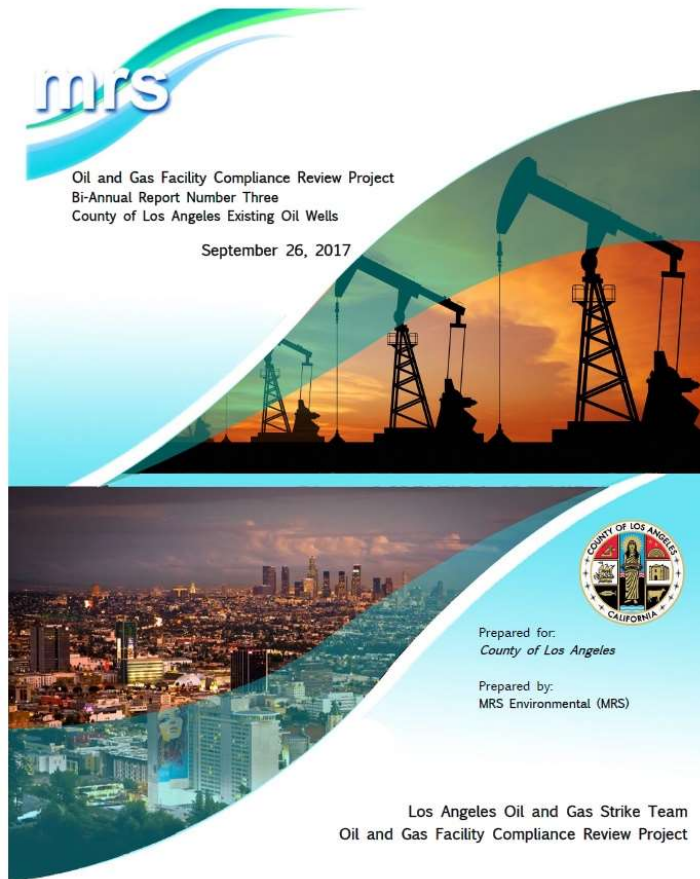
OIL WELL ORDINANCE

COUNTY OF LOS ANGELES



# LA County Board of Supervisors

Motion March 29, 2016



OIL WELL ORDINANCE

COUNTY OF LOS ANGELES



# LA County Board of Supervisors

---

**Motion March 29, 2016**

1. Direct Regional Planning, Public Health, Fire Department, and Public Works to convene a “Strike Team” to study existing oil and gas facilities in unincorporated Los Angeles County.
2. Update Title 22 regulations for new and existing oil and gas facilities.



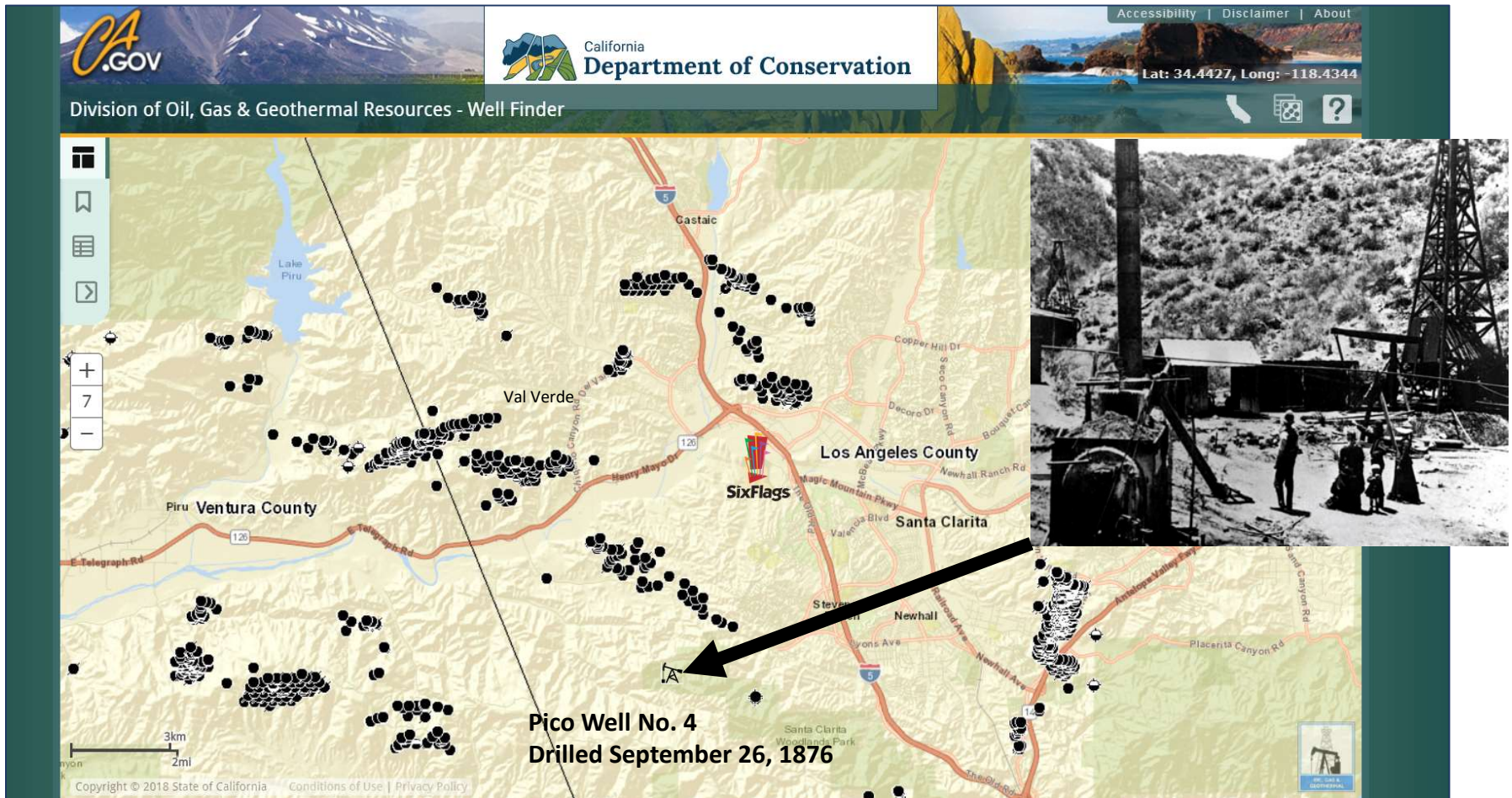
OIL WELL ORDINANCE

COUNTY OF LOS ANGELES





# Oil in Unincorporated LA County



Source: <https://maps.conservation.ca.gov/doggr/wellfinder>, <https://aoghs.org/petroleum-pioneers/first-california-oil-well/>



OIL WELL ORDINANCE

COUNTY OF LOS ANGELES



# Oil in Unincorporated LA County

---



1957-2004



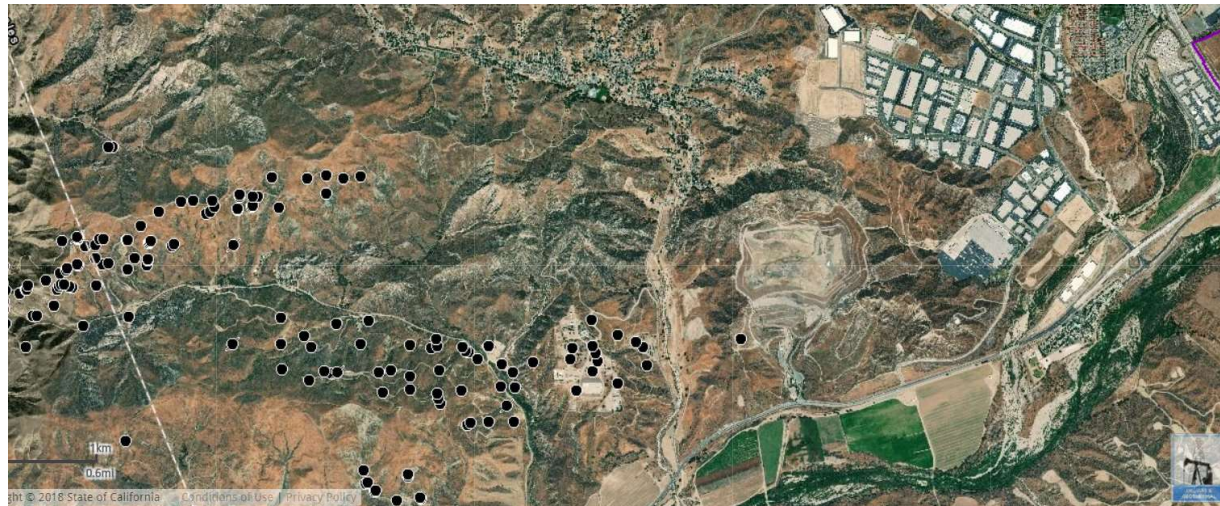
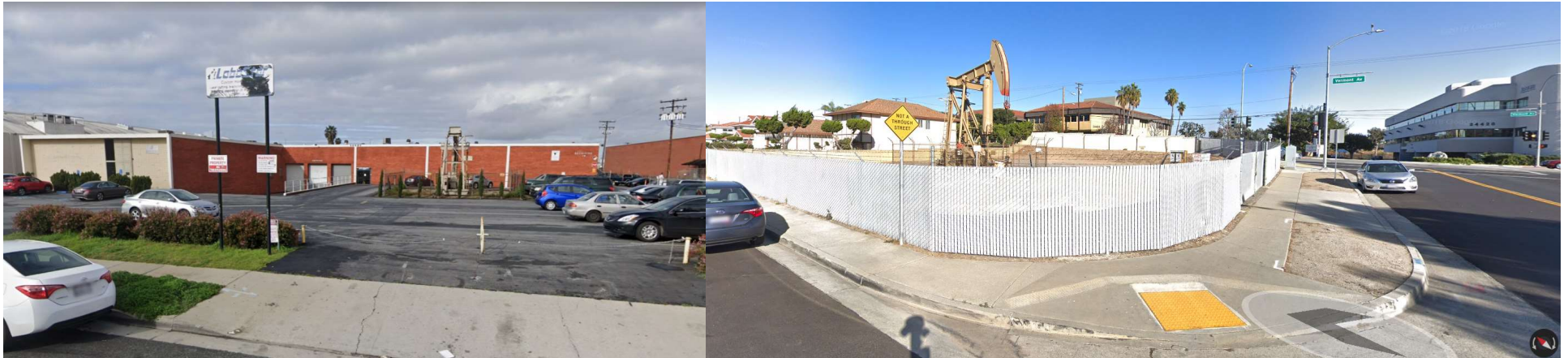
OIL WELL ORDINANCE

COUNTY OF LOS ANGELES





# Oil in Unincorporated LA County

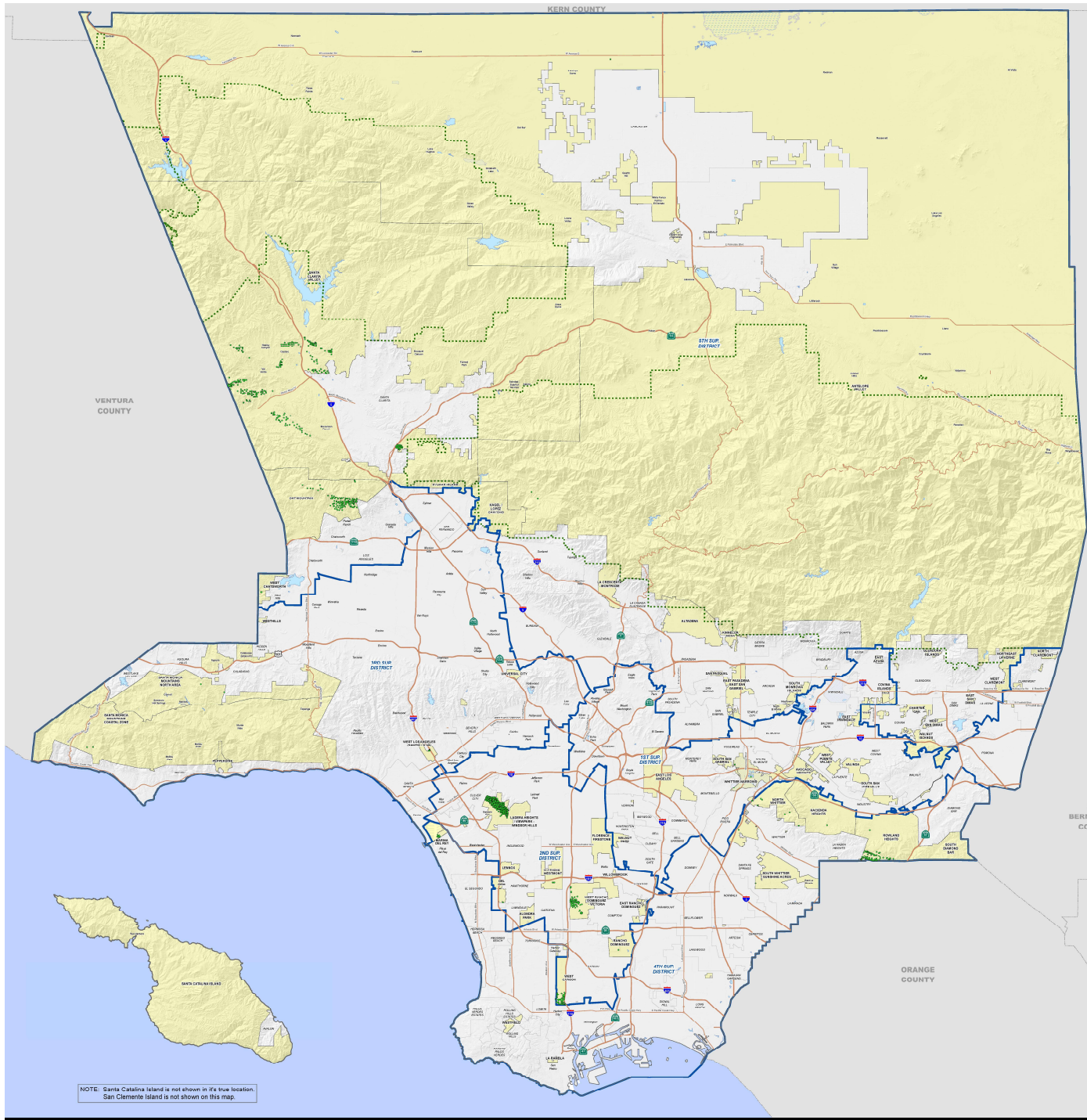


OIL WELL ORDINANCE

COUNTY OF LOS ANGELES







# COUNTY OF LOS ANGELES OIL & GAS WELLS

*Unincorporated*

January 2016

## LEGEND:

Oil or Gas Well

### Base Features

Supervisory District

Unincorporated Area

City Boundary

National Forest

Perennial Water Body

Intermittent Water Body

Dry Water Body

Source of oil well data is the California Department of Conservation, Division of Oil & Geothermal Resources  
([www.conservation.ca.gov/dor](http://www.conservation.ca.gov/dor))

## VICINITY MAP:



LOS ANGELES COUNTY  
Dept. of Planning  
255 W. Temple St.  
Los Angeles, CA 90012

0 1 2 4 6 8 Miles

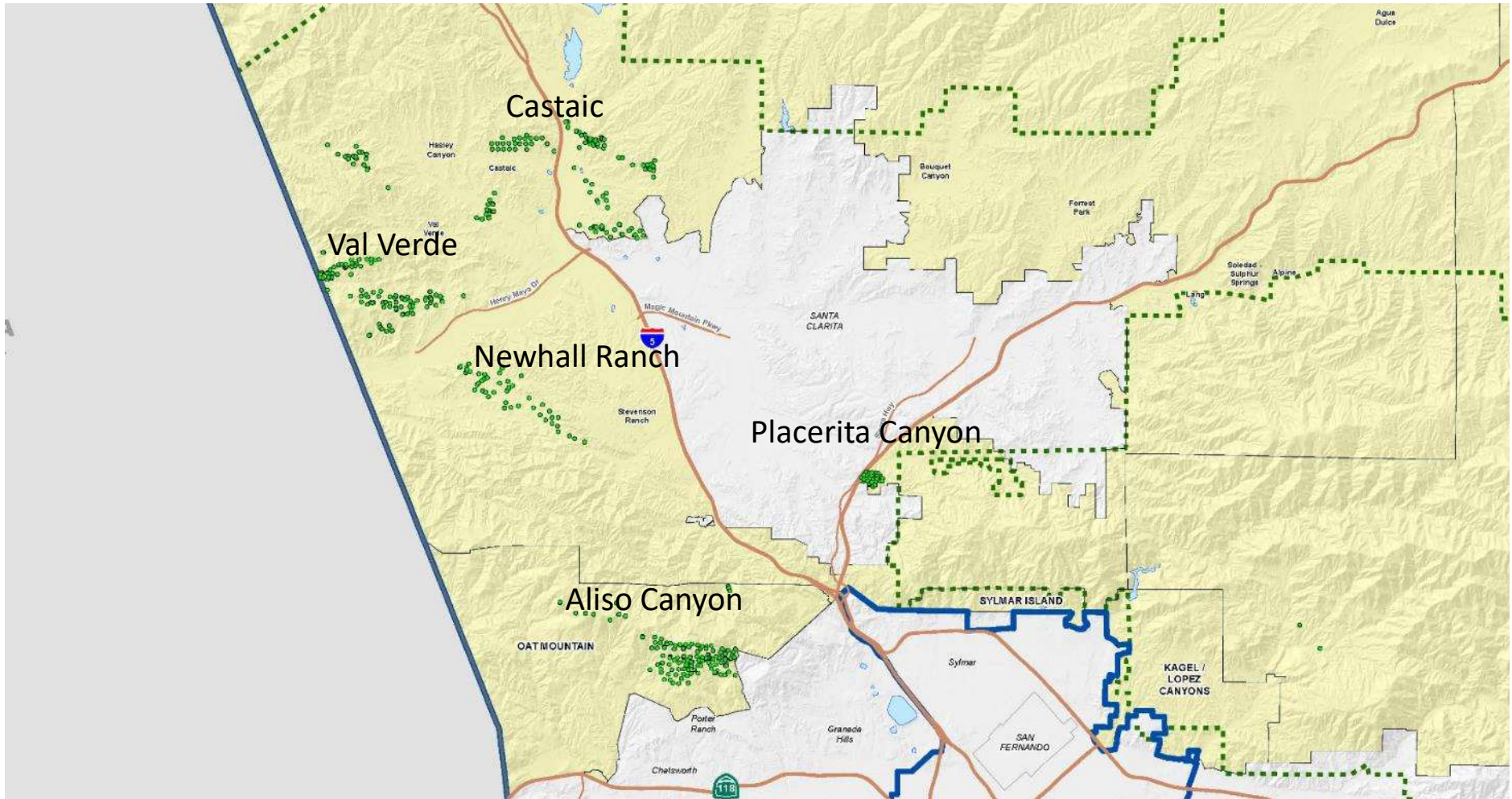
Date Created: 10/28/16

NOTE: Santa Catalina Island is not shown in its true location.  
San Clemente Island is not shown on this map.

PROJECTS: OGP\_LAND\_USE\_REGULATION\working\_documents\info\reports\OGP\_Rpt\_OG\_Water\_Countywide



# Oil in Unincorporated LA County

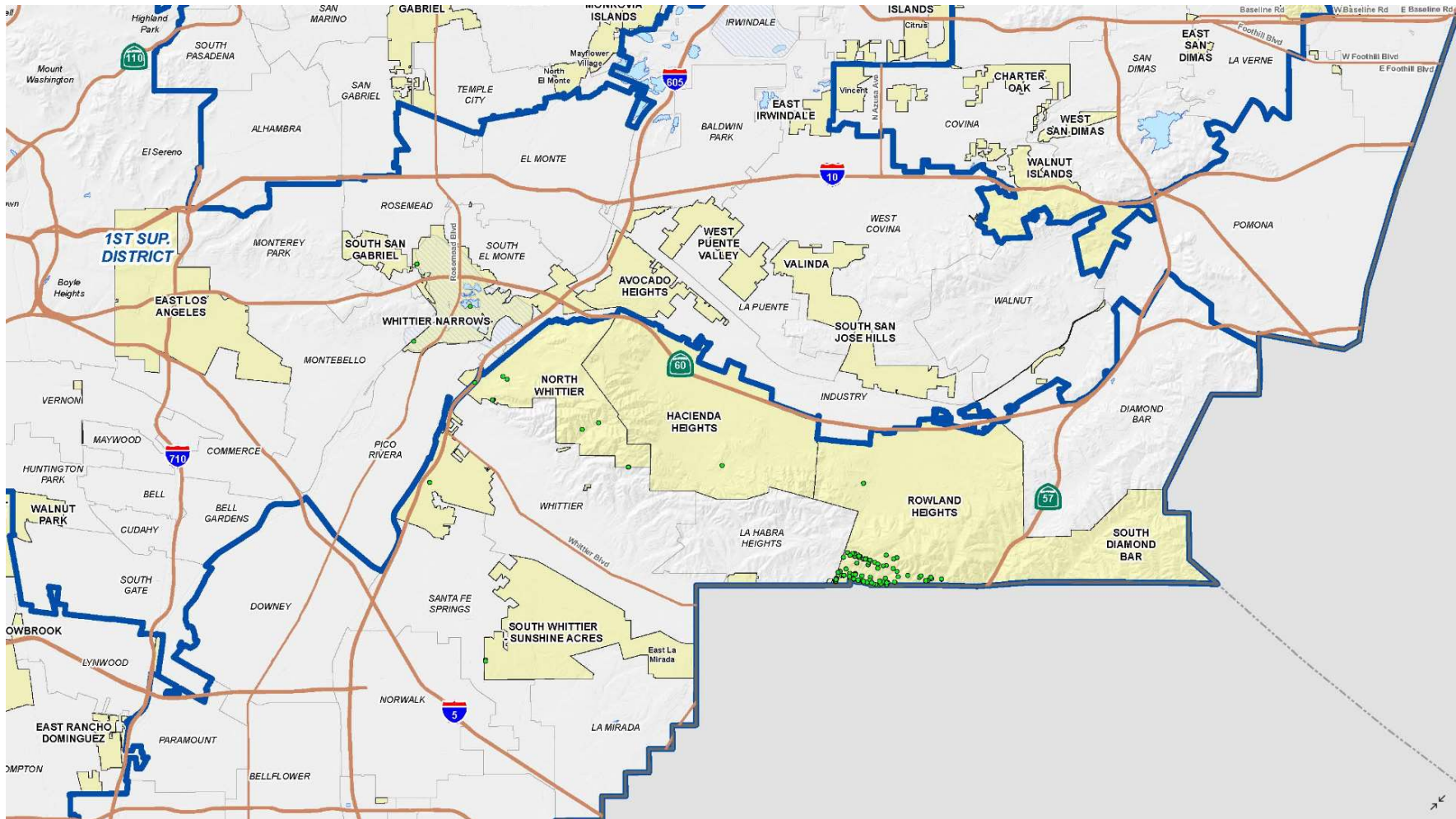


OIL WELL ORDINANCE

COUNTY OF LOS ANGELES



# Oil in Unincorporated LA County



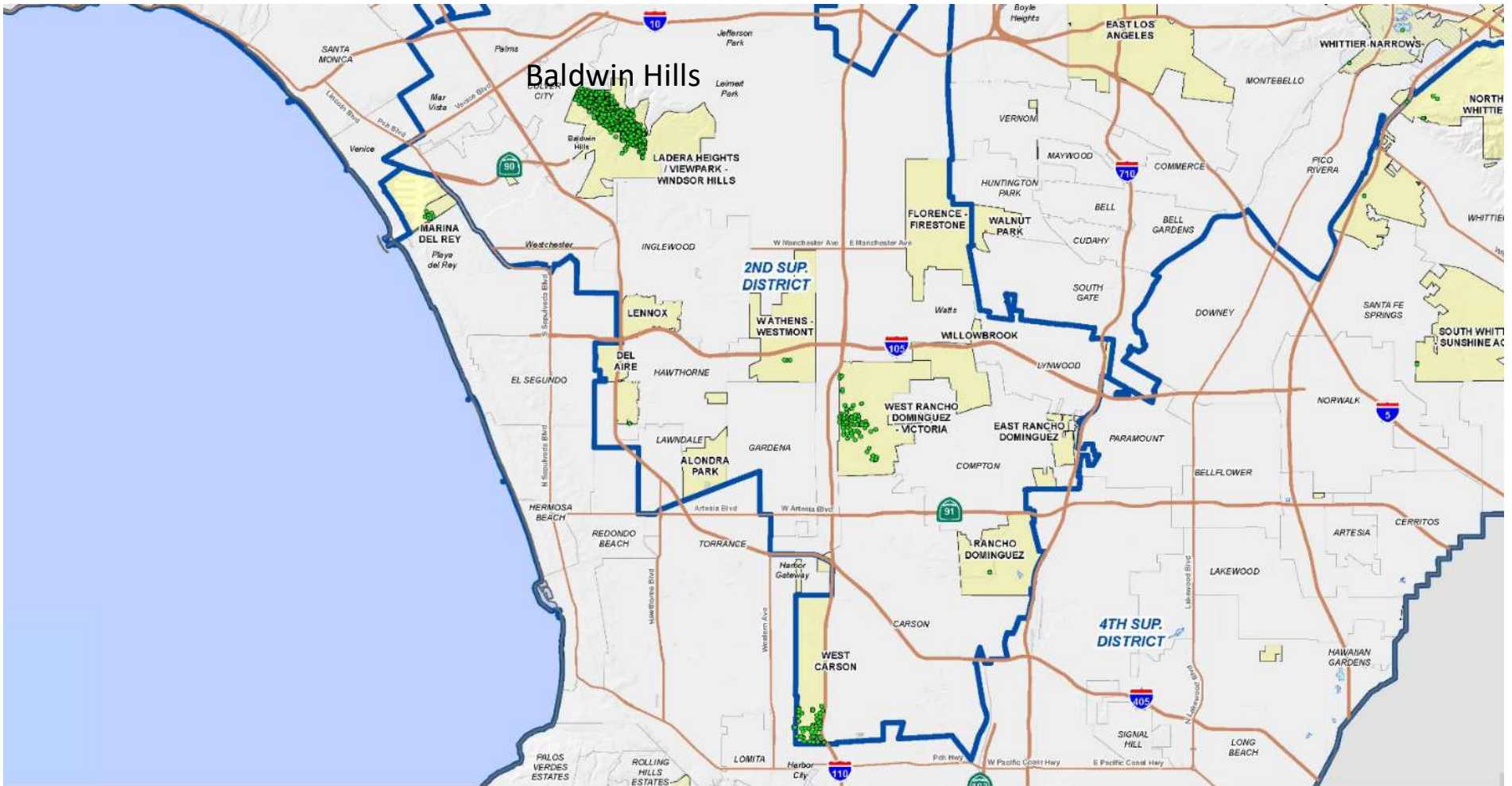
OIL WELL ORDINANCE

COUNTY OF LOS ANGELES





# Oil in Unincorporated LA County



## OIL WELL ORDINANCE

COUNTY OF LOS ANGELES





# Oil in Unincorporated LA County

---

- ~ 1,687: Wells in Unincorporated LA County
  - ~874: Wells in the Baldwin Hills Community Standards District
  - ~ 813: Wells in the rest of Unincorporated LA County
    - ~148: Wells operating under a discretionary permit
    - ~665: Wells operating under ministerial permit or other (will be subject to the Oil Well Ordinance)



# Oil in Unincorporated LA County

---

## Title 22 Regulations Today

### Permit Requirements (1971)

- Ministerial Site Plan Review: Zones A-2, M-1, M-1.5, M-2
  - CUP required for oil wells within 300 feet of a buildings or 20 feet of a streets
- Conditional Use Permit: Zones R-1, R-2, R-3, R-4, R-A, A-1, C-H, C-1, C-2, C-3, C-M, C-R, C-RU, M-2.5, R-R, O-S, and W

### Development and Operating Standards (1978)

- Provisions for signage and toilets
- Removal of equipment within 90 days after drilling ends
- No deliveries between 6 pm and 8 am



# LA County Board of Supervisors

---

**Motion March 29, 2016**

1. Direct Regional Planning, Public Health, Fire Department, and Public Works to convene a “Strike Team” to study existing oil and gas facilities in unincorporated Los Angeles County.
2. Update Title 22 regulations for new and existing oil and gas facilities.



OIL WELL ORDINANCE

COUNTY OF LOS ANGELES





# Oil Well Ordinance

---

## Section 22.140.400

New Oil Wells and Accessory Production Facilities

## Section 22.140.402

Existing Oil Wells and Accessory Production Facilities



OIL WELL ORDINANCE

COUNTY OF LOS ANGELES



# Oil Well Ordinance

---

## Permit Requirements

for New Oil Wells and Accessory Production Facilities

- Prohibited in Zones R-1, R-2, R-3, R-4, R-5, C-1, C-2, C-3, C-H, C-M, C-R, C-RU, and W
- Require a Conditional Use Permit in Zones A-1, A-2, O-S, R-R, M-1, M-1.5, M-2, and M-2.5



OIL WELL ORDINANCE

COUNTY OF LOS ANGELES



# Oil Well Ordinance

---

## Permit Requirements for Existing Oil Wells and Accessory Production Facilities

- Require Deemed-Approved Status
  - 2 years: Zones R-1, R-2, R-3, R-4, R-5, C-1, C-2, C-3, C-H, C-M, C-R, C-RU, and W
  - 4 year : Zones A-1, R-A, and O-S
  - 6 years: Zones A-2, M-1, M-1.5, M-2, M-2.5, M-3, and B-1
  - CUP required if deemed-approved status is not obtained
- In Zones R-1, R-2, R-3, R-4, R-5, C-1, C-2, C-3, C-H, C-M, C-R, C-RU, and W existing wells with deemed-approved status are required to cease operation 20 years after the effective date of the ordinance





# Oil Well Ordinance

---

## Development and Operating Standards for New and Existing Oil Wells and Accessory Production Facilities

- Annual inspections
- Site maintenance standards
- Updated enforcement standards
- Updated bond requirements
- Remove Title 12 exemption to noise and vibration standards



# Oil Well Ordinance

---

## Development and Operating Standards for New and Existing Oil Wells and Accessory Production Facilities

- Community notification requirements
- Provision of records to the County
- Emissions compliance plan
- Standards for well plugging and site restoration



# Oil Well Ordinance

---

## Development and Operating Standards for New Oil Wells and Accessory Production Facilities

- 500 foot setback from Zones R-1, R-2, R-3, R-4, or R-5  
(Conditional Use Permit can modify setback)
- Meteorological station



# Regulations: County Departments

---

- Fire Department
  - Petroleum Chemical Unit
  - Health Hazardous Material Division/CUPA
  - Emergency Operations
- Department of Public Health
  - Environmental Health Division
- Department of Public Works
  - Office of Oil and Gas
  - Environmental Programs



# Regulations: State and Regional Agencies

---



California

**Department of Conservation**



**Cal OES**

GOVERNOR'S OFFICE  
OF EMERGENCY SERVICES



**CalEPA**

California Environmental  
Protection Agency



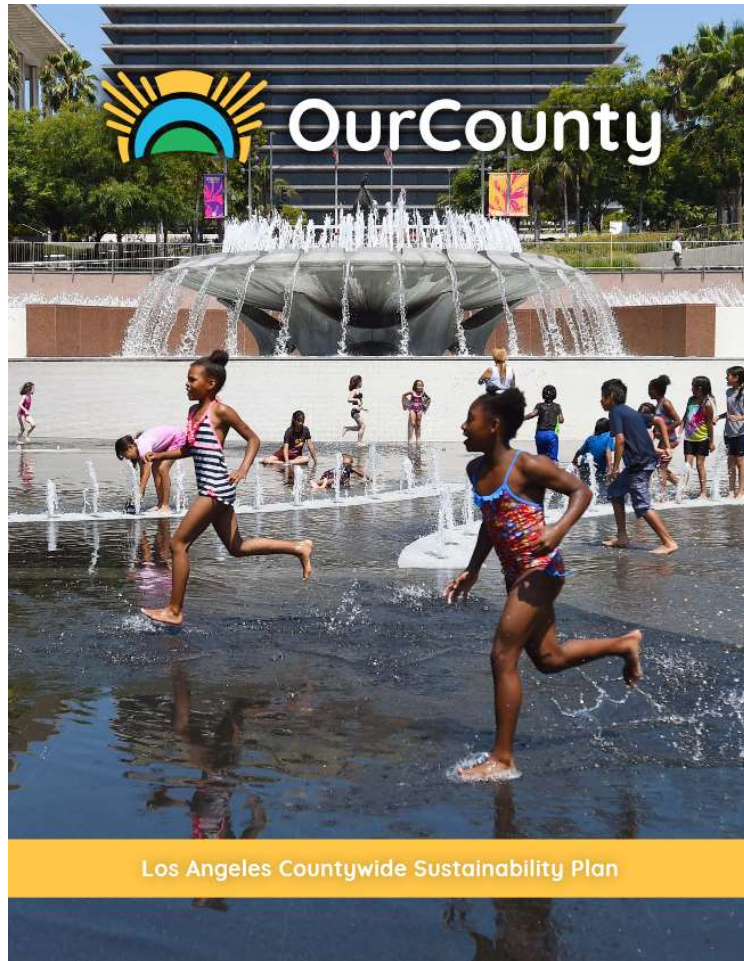
OIL WELL ORDINANCE

COUNTY OF LOS ANGELES





# County Sustainability Plan and Climate Action Plan



- Action 2: Expand the minimum setback distance for oil and gas operations from sensitive land uses.
- Action 4: Require oil and gas operators to prepare and make available a comprehensive Community Safety Plan



OIL WELL ORDINANCE

COUNTY OF LOS ANGELES



# Next Steps

---

- Community outreach
- Prepare draft ordinance for public hearing

