

# SANTA CLARITA VALLEY Area Plan

Adopted by Board of Supervisors - 11/27/14

As Amended Through - No Amendments

### LEGEND

#### Land Use Policy

- RL1 - Rural Land 1 (1 du / 1 ac)
- RL2 - Rural Land 2 (1 du / 2 ac)
- RL5 - Rural Land 5 (1 du / 5 ac)
- RL10 - Rural Land 10 (1 du / 10 ac)
- RL20 - Rural Land 20 (1 du / 20 ac)
- H2 - Residential 2 (0-2 du/ac)
- H5 - Residential 5 (0-5 du/ac)
- H18 - Residential 18 (9-18 du/ac)
- H30 - Residential 30 (18-30 du/ac)
- CG - General Commercial
- CM - Major Commercial
- IL - Light Industrial
- IO - Industrial Office
- P - Public and Semi-Public
- OS-NF - Open Space National Forest
- OS-C - Open Space Conservation
- OS-PR - Open Space Parks and Recreation
- OS-BLM - Bureau of Land Management
- OS-W - Water
- SP - Specific Plan\*

#### Base Features

- Lot, Cut/Deed, Subdiv. and Easement
- Parcels
- Specific Plan Boundary
- City / Unincorporated Comm. Boundary
- Surrounding City
- Surrounding Unincorporated Community
- Significant Ecological Area
- National Forest

#### Transit Lines

- Metrolink Stations
- Metro Rail Stations
- Metrolink
- Transways
- Light Rail - Existing
- Light Rail - Proposed
- Light Rail - Under Construction

#### SPECIFIC PLANS:

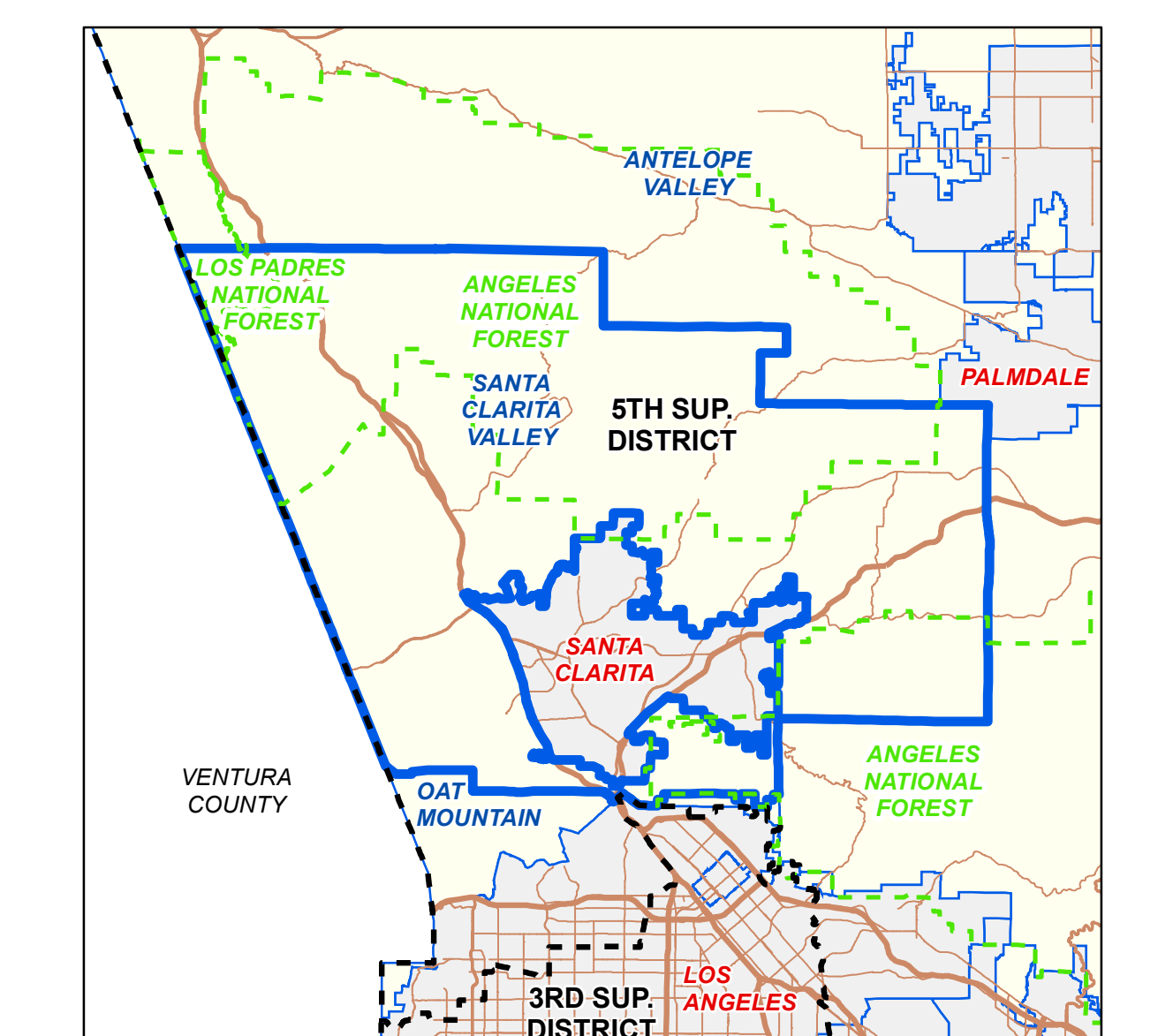
Northlake Specific Plan is depicted in the Inset Map. Please see separate map for Newhall Ranch Specific Plan.

Standards of population density and building intensity within a specific plan can be determined by reference to its plan document and the environmental documents prepared pursuant to CEQA.

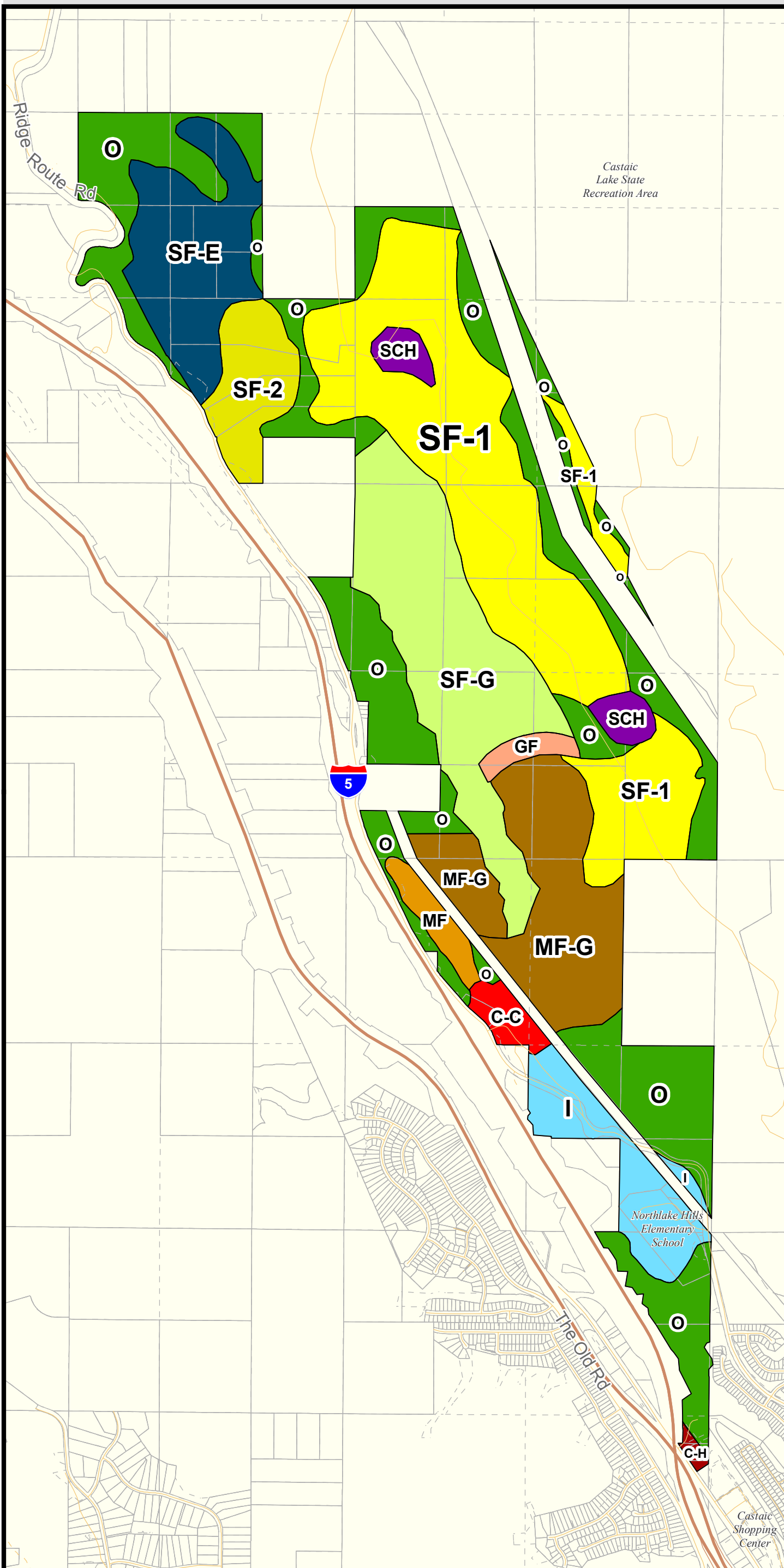
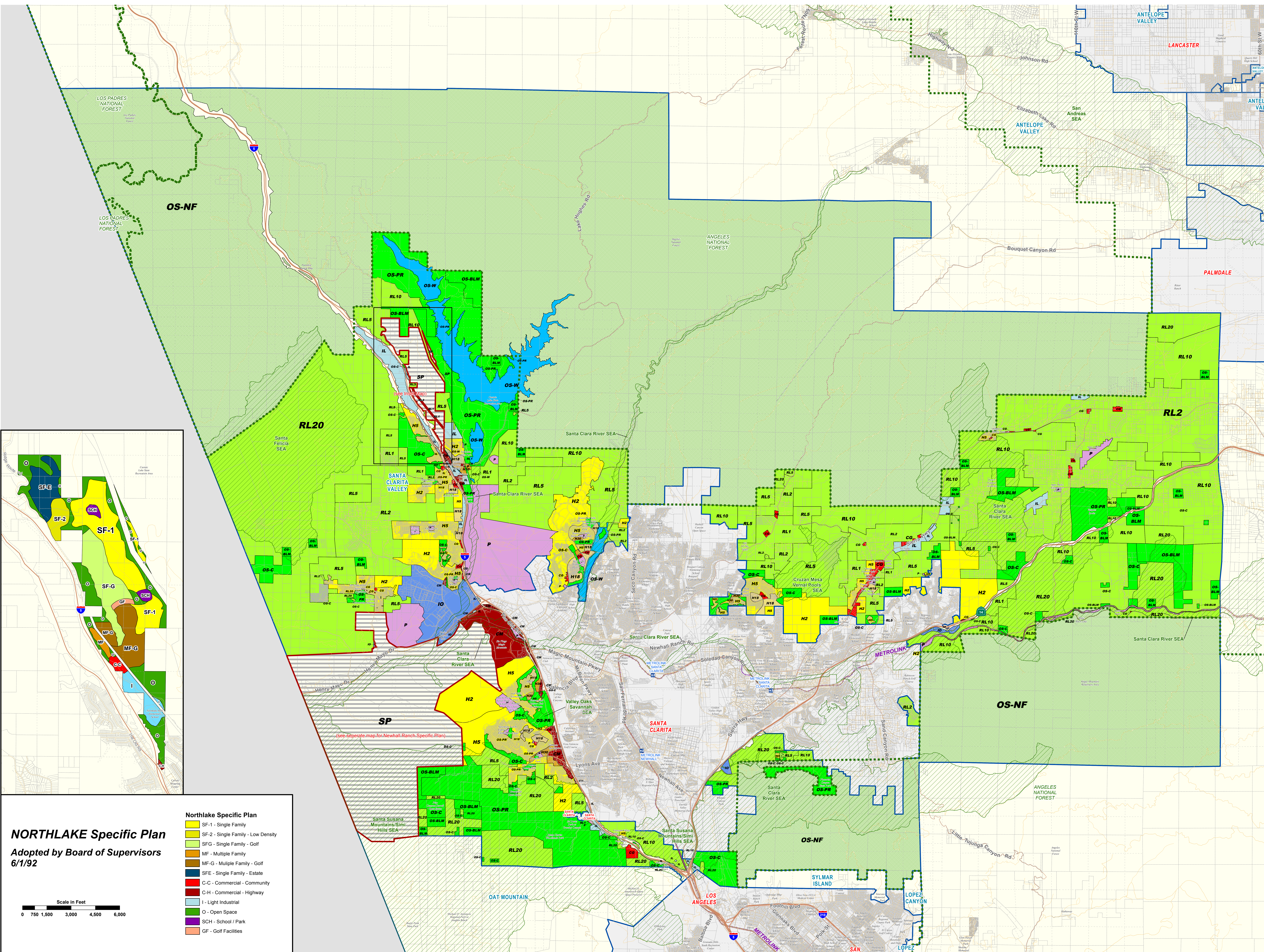
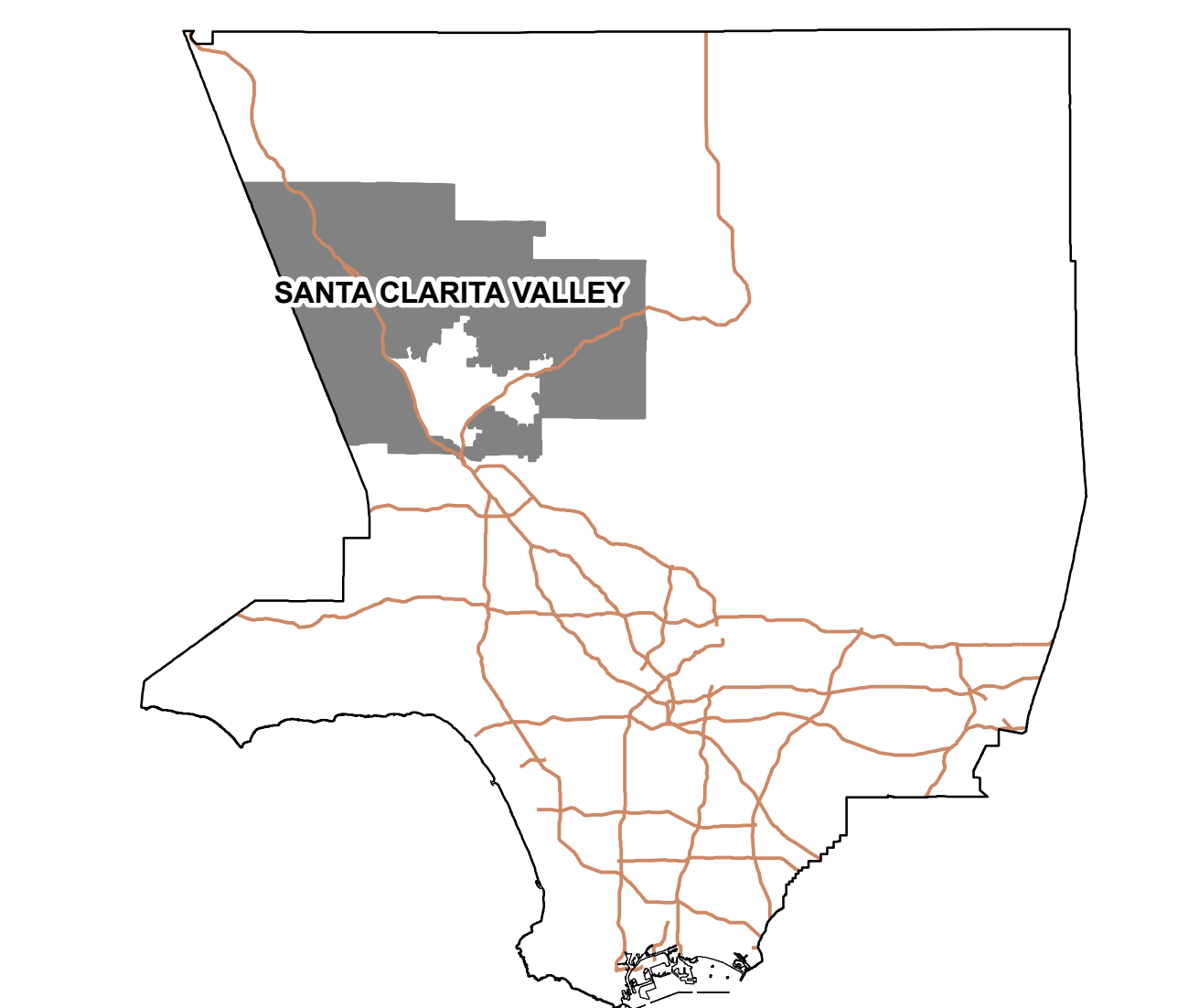
Parcel boundaries are from the parcel database maintained by the Department of Public Works and the Assessor's Office. Parcels shown on the map reflect the most recent update from the Assessor's Office as of the "Current As of" date listed below. Dashed lines represent additional parcel information such as easements, cut/deed lines, lot lines, subdivision boundaries and tax rate area lines.

Street Centerline data from 2010 TIGER (US Census Bureau), modified through the LA County Courtwide Address Management System (CAMS).

### VICINITY MAP:

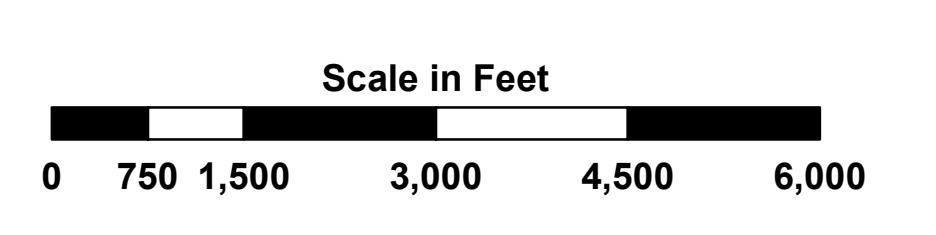


### KEY MAP:



**NORTHLAKE Specific Plan**  
Adopted by Board of Supervisors  
6/1/92

- #### Northlake Specific Plan
- SF-1 - Single Family
  - SF-2 - Single Family - Low Density
  - SF-G - Single Family - Golf
  - MF - Multiple Family
  - MF-G - Multiple Family - Golf
  - SFE - Single Family - Estate
  - C-C - Commercial - Community
  - C-H - Commercial - Highway
  - I - Light Industrial
  - O - Open Space
  - SCH - School / Park
  - GF - Golf Facilities



Current as of: 12/23/2014



LOS ANGELES COUNTY  
Department of Regional Planning  
320 W. Temple St.  
Los Angeles, CA 90012

