

# Los Angeles County

## EAST LOS ANGELES Community Plan

Adopted by Board of Supervisors - 6/23/88

As Amended Through - 11/12/14 (LP 2014-00003)

### LEGEND

#### Land Use Policy

- LD - Low Density Residential (8 du/ac)
- LMD - Low/Medium Density Residential (17 du/ac)
- MD - Medium Density Residential (30 du/ac)
- RP - Residential Parking
- CR - Commercial Residential (30 du/ac)
- CC - Community Commercial
- MC - Major Commercial
- CM - Commercial Manufacturing
- I - Industrial
- P - Public Use
- SP - Specific Plan

#### Transit Lines

- MetroLink Stations
- Metro Rail Stations
- MetroLink
- Transitways
- Light Rail - Existing
- Light Rail - Proposed
- Light Rail - Under Construction

#### Base Features

- Lot, Cut/Deed, Subdivision and Easement Line
- Parcels
- Specific Plan Boundary
- City / Unincorporated Community Boundary
- Surrounding City
- Surrounding Unincorporated Community
- National Forest

#### NOTES:

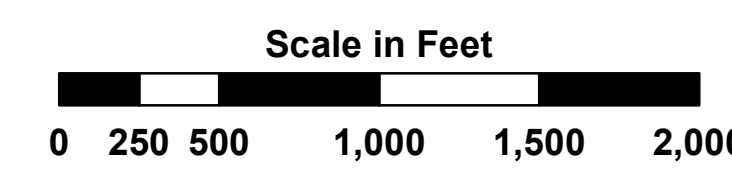
This policy map depicts generalized land use classifications, each of which is intended to describe the dominant use characteristics within the area covered. The location of planning boundaries is as accurate as can be portrayed at this scale. The actual use and intensity of development that may be allowed on private property within any given land classification is determined by a review of this policy map, other mapped and written policies of the Plan, and the underlying zoning classification. For a professional evaluation of what uses may be allowed in a given land use classification, please contact the Land Development Coordinating Center (LDCC) at (213) 974-6411.

Parcel boundaries are from the parcel database maintained by the Department of Public Works and the Assessor's Office. Parcels shown on the map reflect the most recent updates from the Assessor's Office as of the "Current As of" date listed below. Dashed lines represent additional parcel line work such as easements, cut/deed lines, lot lines, subdivision boundaries and tax rate area lines.

Street Centerline data from 2010 TIGER (US Census Bureau), modified through the LA County Countywide Address Management System (CAMS).

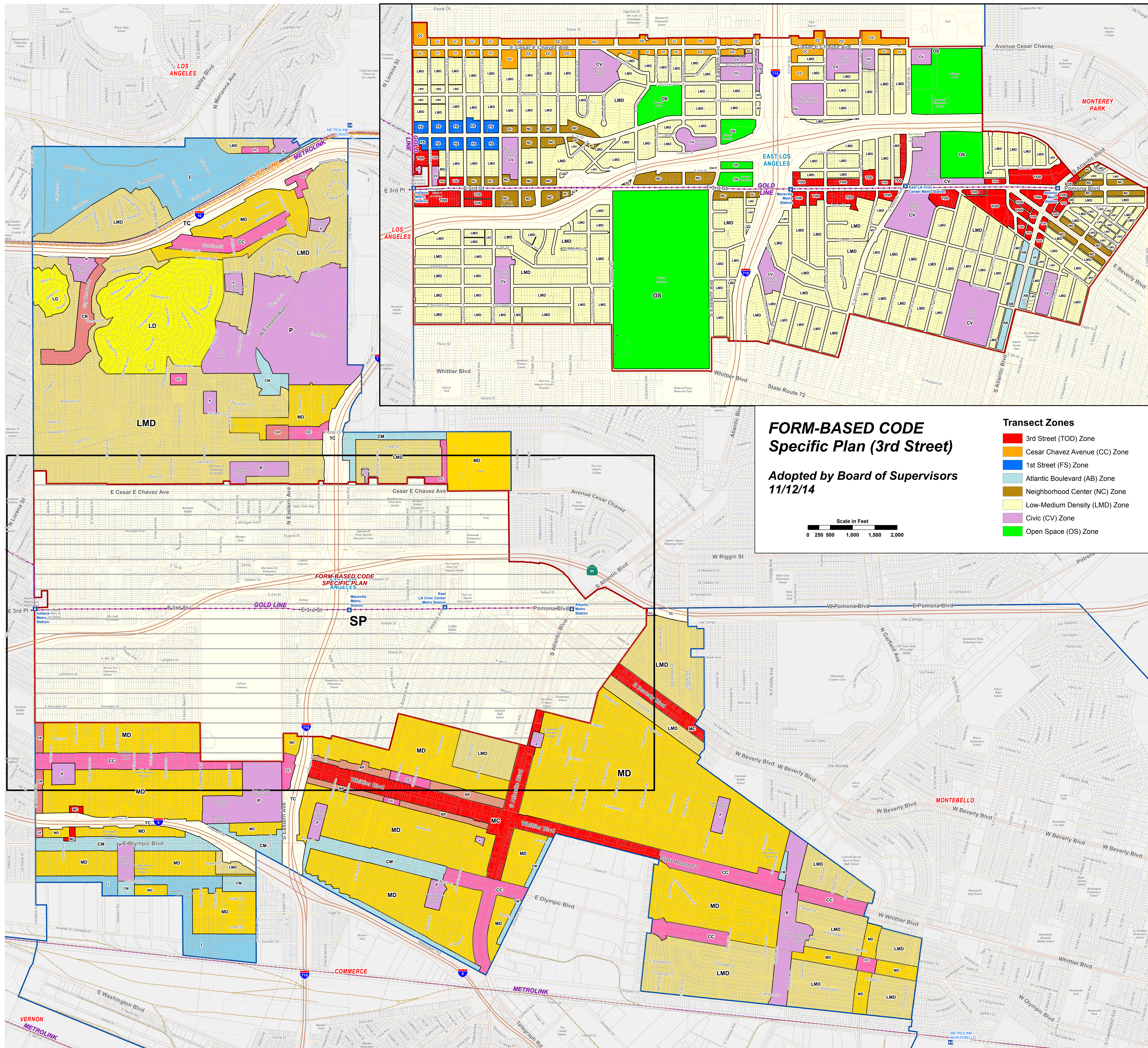
### FORM-BASED CODE Specific Plan (3rd Street)

Adopted by Board of Supervisors  
11/12/14

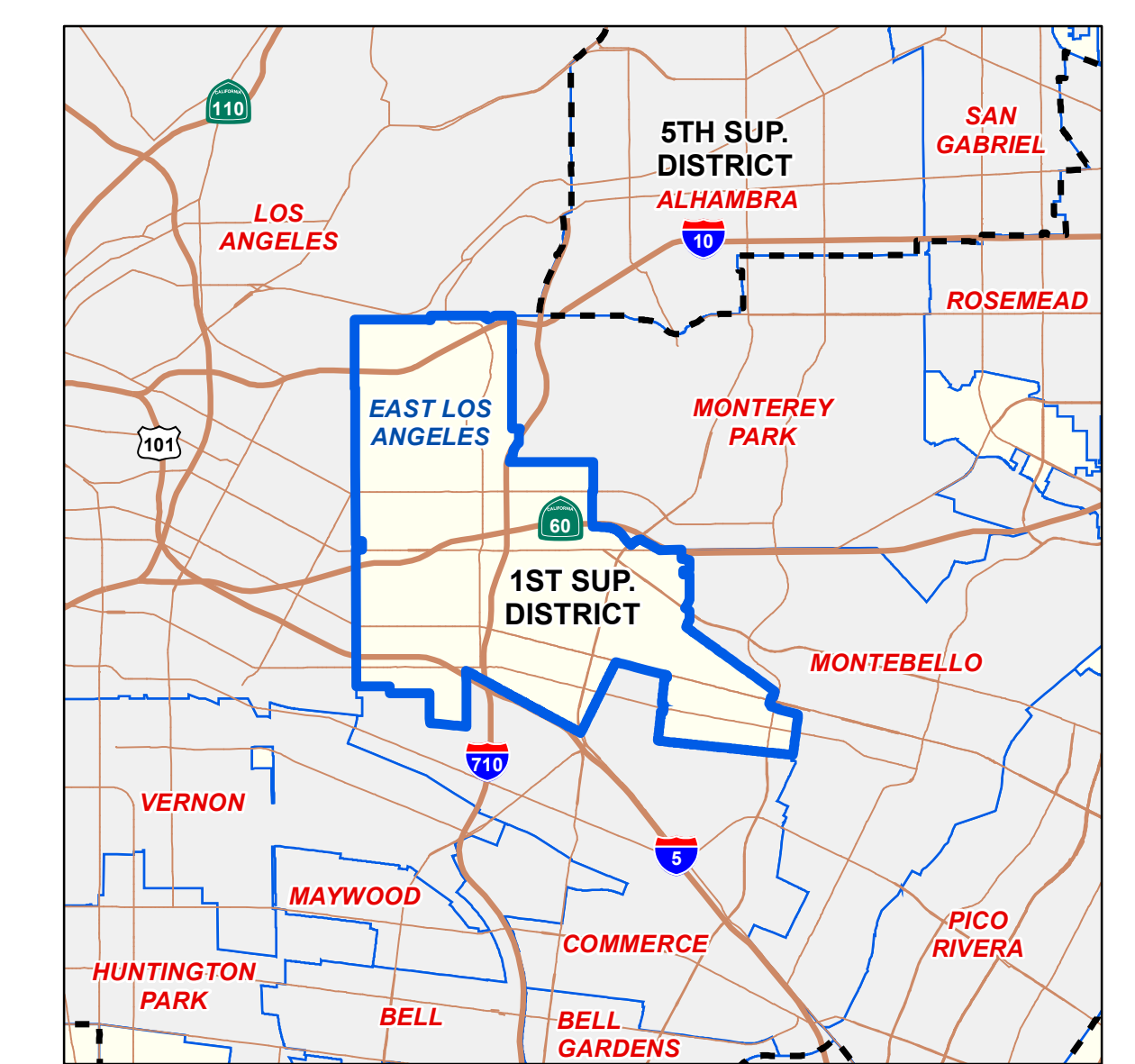


#### Transect Zones

- 3rd Street (TOD) Zone
- Cesar Chavez Avenue (CC) Zone
- 1st Street (FS) Zone
- Atlantic Boulevard (AB) Zone
- Neighborhood Center (NC) Zone
- Low-Medium Density (LMD) Zone
- Civic (CV) Zone
- Open Space (OS) Zone



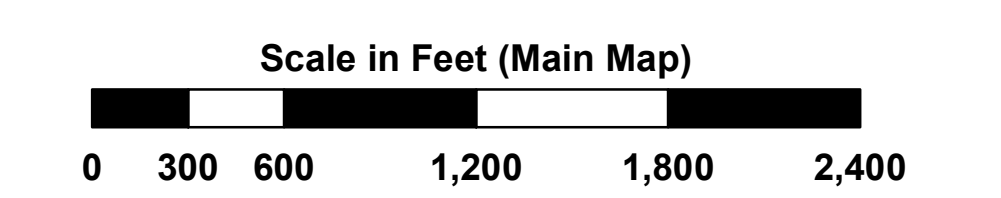
#### VICINITY MAP:



#### KEY MAP:



LOS ANGELES COUNTY  
Department of Regional Planning  
320 W. Temple St.  
Los Angeles, CA 90012



Current as of: 12/18/2014