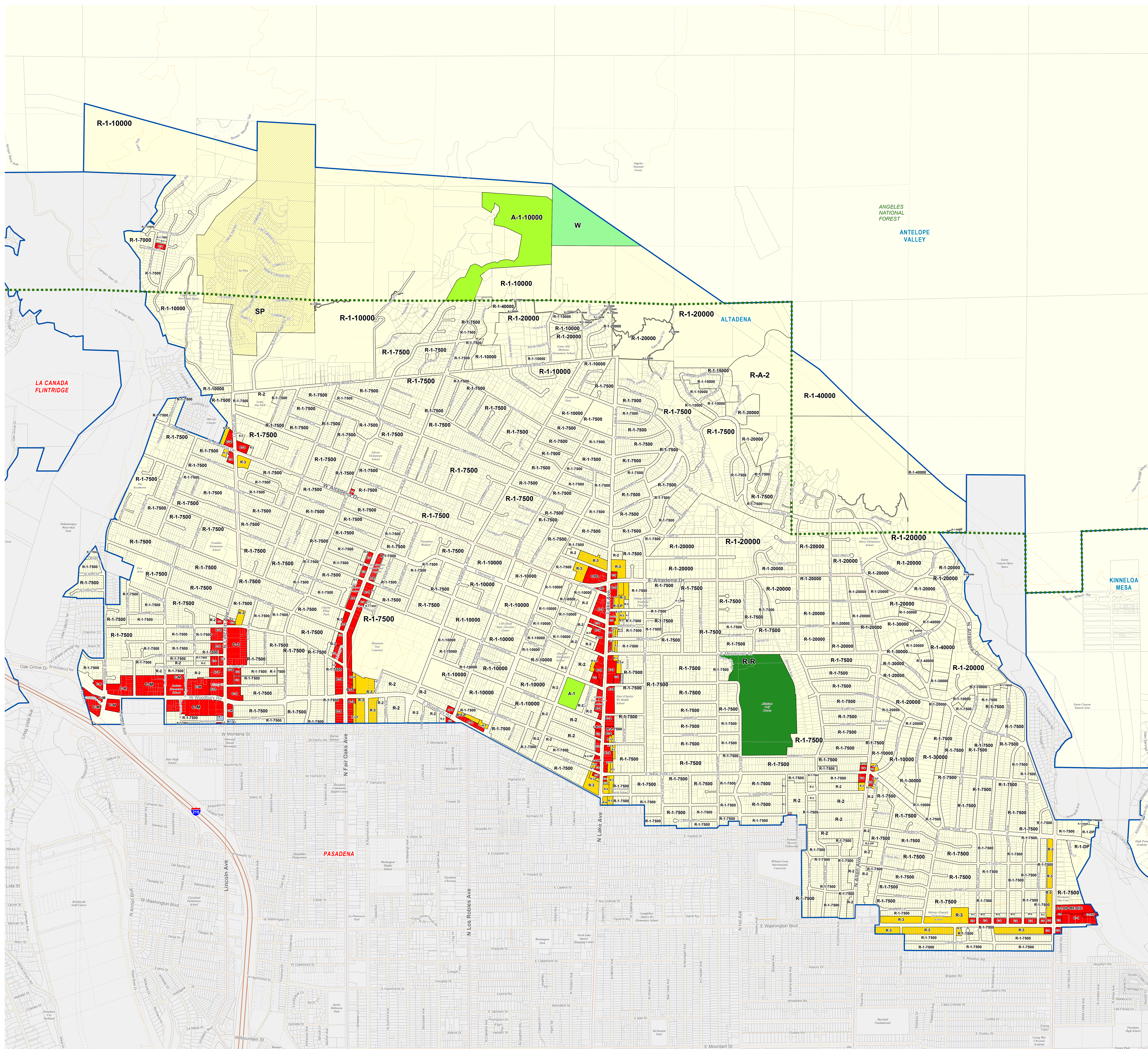


Los Angeles County

Zoning

Altadena



LEGEND:

- | | |
|--|--|
| R-1 - Single-Family Residence | M-1 - Light Manufacturing |
| R-2 - Two-Family Residence | M-1.5 - Restricted Heavy Manufacturing |
| R-3-(U) - Limited Density Multiple Residence | M-2 - Heavy Manufacturing |
| R-3-(J) - Limited Multiple Residence (SMMC only) | M-2.5 - Aircraft and Heavy Manufacturing |
| R-4-(U) - Medium Density Multiple Residence | M-3 - Unclassified |
| R-5-(U) - High Density Multiple Residence | MPD - Manufacturing-Industrial Planned |
| R-A - Residential Agricultural | B-1 - Buffer Strip |
| R-C - Rural Coastal | B-2 - Corner Buffer |
| RPD - Residential Planned Development | D-2 - Desert-Mountain |
| A-1 - Light Agricultural | IT - Institutional |
| A-2 - Heavy Agricultural | R-R - Resort And Recreation |
| A-2-H - Heavy Agricultural Including Hog Ranches | P-R - Parking Restricted |
| C-1 - Restricted Business | SR-D - Scientific Research and Development |
| C-2 - Neighborhood Business | O-S - Open Space |
| C-3 - General Commercial | O-S-P - Open Space - Parks |
| C-H - Commercial Highway | O-S-DR - Open Space - Deed Restricted |
| C-M - Commercial Manufacturing | MXD - Mixed Use Development |
| C-MJ - Major Commercial | MXD-RU - Rural Mixed Use Development |
| C-R - Commercial Recreation | CRU - Rural Commercial |
| CPD - Commercial Planned Development | W - Watershed |

Base Layers

- | | |
|--|--|
| Metrolink Stations | City / Unincorporated Community Boundary |
| Metro Rail Stations | Incorporated City |
| Metrolink | Unincorporated Areas |
| Transitways | National Forest |
| Light Rail - Existing | Parcels |
| Light Rail - Proposed | City / Unincorporated Community Boundary |
| Light Rail - Under Construction | Incorporated City |
| Lot, Cut/Deed, Subdivision and Easement Line | Unincorporated Areas |

Latest Zone Change Ordinance:
2009-0010Z (3/24/2009)

NOTE:

Zoning reflects the most current designation as of the date listed "Current as of" below. The most recent zone change ordinances have been incorporated by the GIS section as of their effective date, with the latest Zone Change Ordinance showing in the yellow box above.

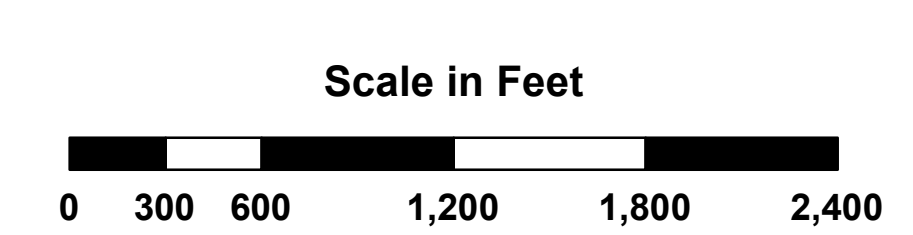
The location of zoning boundaries is as accurate as can be portrayed at this scale. For more precise boundary locations, please use our interactive mapping application GIS-NET3, located at the following URL: http://gis.planning.lacounty.gov/GIS-NET3_PublicViewer.html. Or, contact the Land Development coordinating Center (LDCC) at (213) 974-6411.

For more detailed information about the uses / densities allowed in these zoning categories, please see the Title 22 section of the Department of Regional Planning's webpage: <http://planning.lacounty.gov/luz>

KEY MAP:



Current as of: 4/12/2016



LOS ANGELES COUNTY
Department of Regional Planning
320 W. Temple St.
Los Angeles, CA 90012
<http://planning.lacounty.gov/gis>